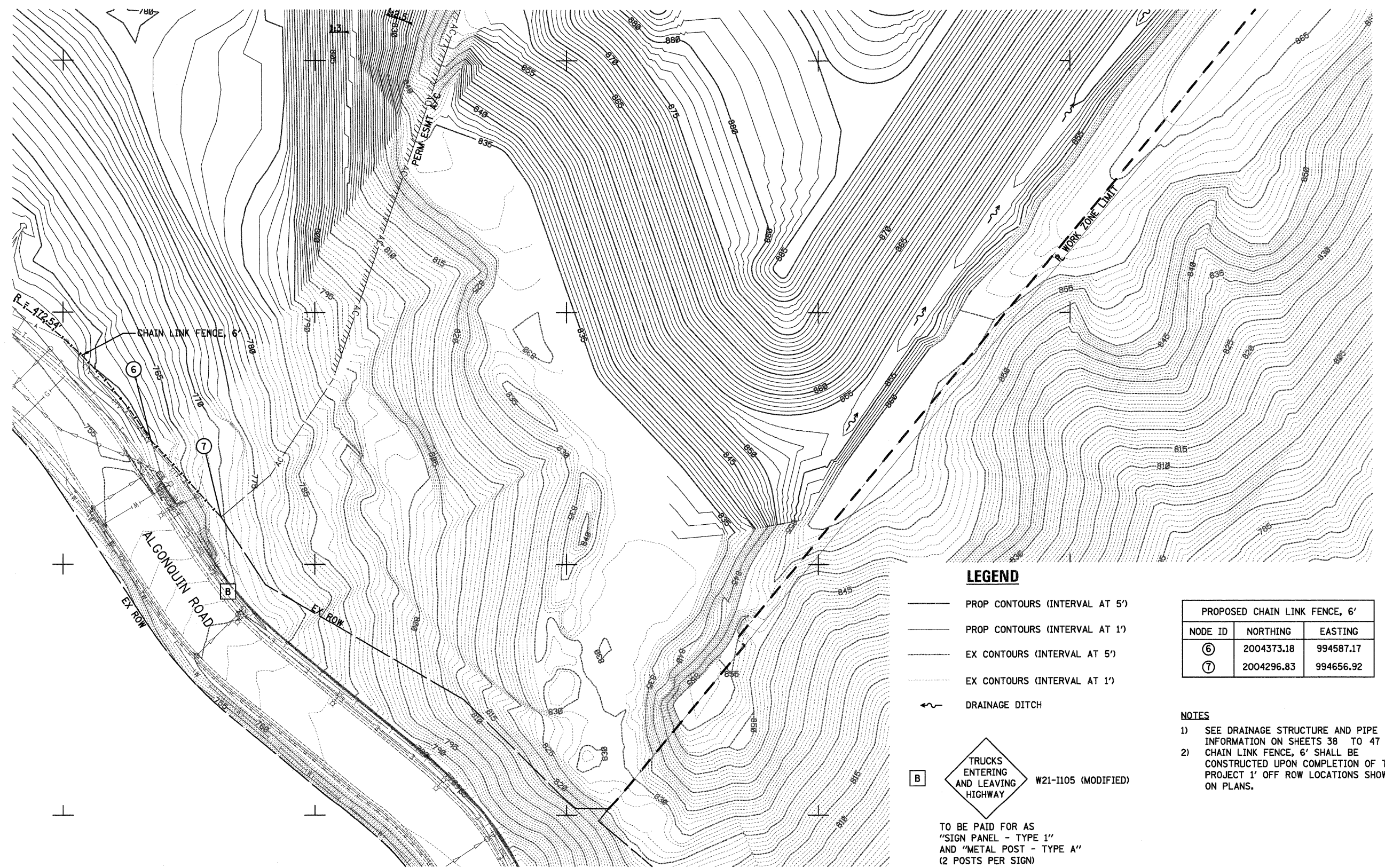


SEE SHEET NO. 15

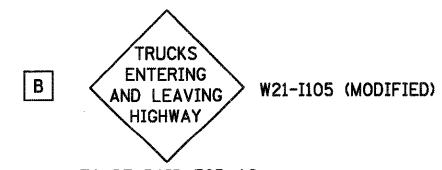


SEE SHEET NO. 12



LEGEND

- PROP CONTOURS (INTERVAL AT 5')
- PROP CONTOURS (INTERVAL AT 1')
- EX CONTOURS (INTERVAL AT 5')
- EX CONTOURS (INTERVAL AT 1')
- DRAINAGE DITCH

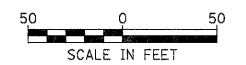


TO BE PAID FOR AS
"SIGN PANEL - TYPE 1"
AND "METAL POST - TYPE A"
(2 POSTS PER SIGN)

PROPOSED CHAIN LINK FENCE, 6'		
NODE ID	NORTHING	EASTING
⑥	2004373.18	994587.17
⑦	2004296.83	994656.92

NOTES

- 1) SEE DRAINAGE STRUCTURE AND PIPE INFORMATION ON SHEETS 38 TO 47.
- 2) CHAIN LINK FENCE, 6' SHALL BE CONSTRUCTED UPON COMPLETION OF THE PROJECT 1' OFF ROW LOCATIONS SHOWN ON PLANS.



E994500

E994750

E995000

E995250

E995500

E995750

N2004200

N2004250

N2004500

N2004750

FILE NAME = ...\\D160F78-sht-grading-02.dgn	USER NAME = oth	DESIGNED - KWH	REVISED -	STATE OF ILLINOIS DEPARTMENT OF TRANSPORTATION	GRADING PLAN		F.A. RTE.	SECTION	COUNTY	TOTAL SHEETS	SHEET NO.
	PLLOT SCALE = 600.0000' / Ft.	DRAWN - JES	REVISED -		SCALE: 1" = 50'	SHEET NO. 2 OF 10 SHEETS	STA.	18A-1	McHENRY	115	13
	PLLOT DATE = 1/18/2012	CHECKED - GAB	REVISED -				TO STA.	CONTRACT NO. 60F78		ILLINOIS FED. AID PROJECT	
		DATE - 1/20/2012	REVISED -								