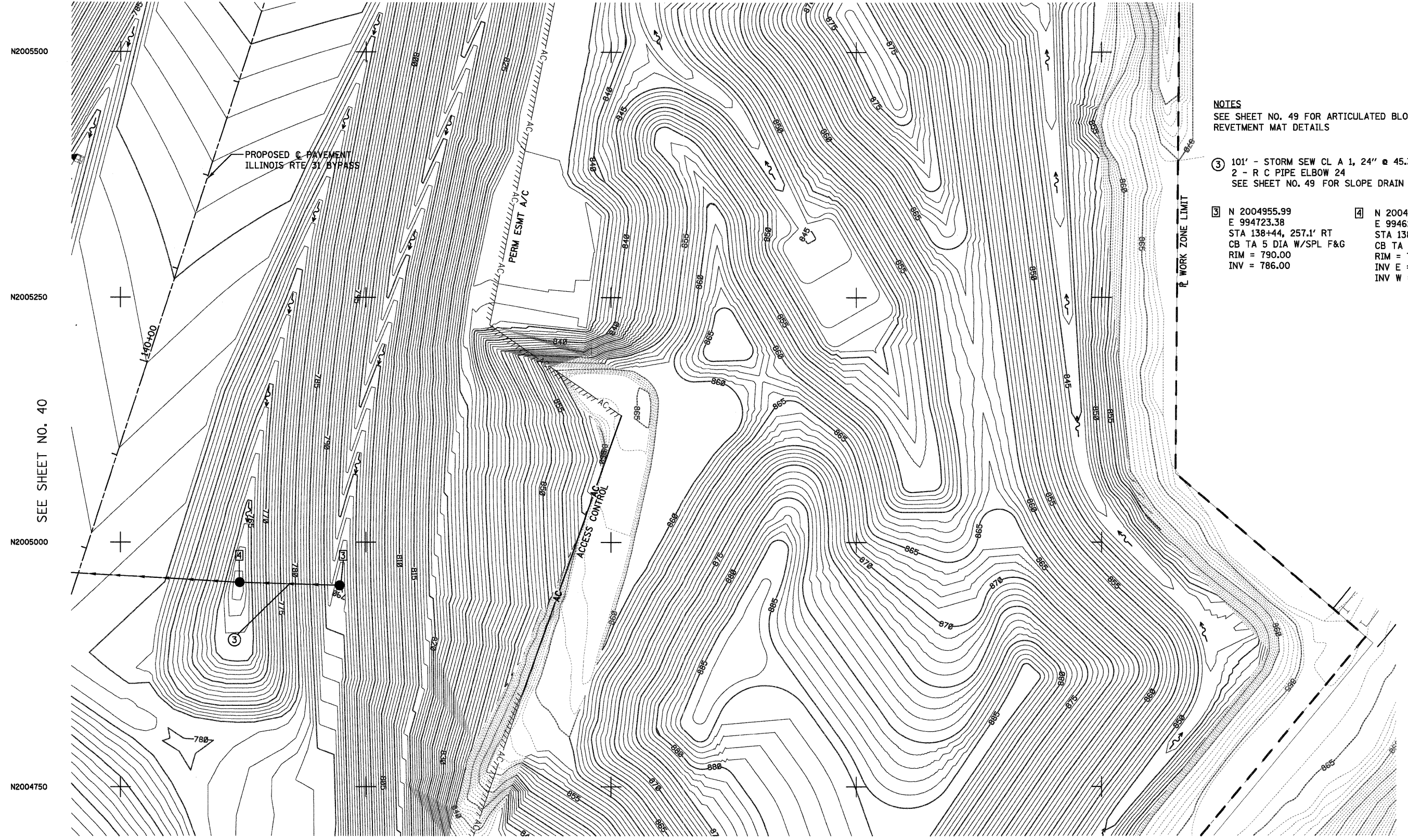


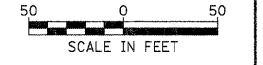
SEE SHEET NO. 42



- NOTES**
 SEE SHEET NO. 49 FOR ARTICULATED BLOCK
 REVETMENT MAT DETAILS
- ③ 101' - STORM SEW CL A 1, 24" @ 45.37%
 2 - R C PIPE ELBOW 24
 SEE SHEET NO. 49 FOR SLOPE DRAIN DETAIL
 - ④ N 2004955.99
 E 994723.38
 STA 138+44, 257.1' RT
 CB TA 5 DIA W/SPL F&G
 RIM = 790.00
 INV = 786.00
 - ④ N 2004959.05
 E 994621.49
 STA 138+15, 159.3' RT
 CB TA 5 DIA W/SPL F&G
 RIM = 761.53
 INV E = 757.60
 INV W = 755.60

SEE SHEET NO. 40

SEE SHEET NO. 39



FILE NAME = ...\\D168F78-shr-drain-04.dgn	USER NAME = ctb	DESIGNED - DTE	REVISED -	STATE OF ILLINOIS DEPARTMENT OF TRANSPORTATION	DRAINAGE PLAN		F.A. RTE.	SECTION	COUNTY	TOTAL SHEETS	SHEET NO.	
	PLOT SCALE = 600.0000' / Ft.	CHECKED - GAB	REVISED -		SCALE: 1" = 50'	SHEET NO. 5 OF 13 SHEETS	STA.	TO STA.	18A-1	McHENRY	115	41
	PLOT DATE = 1/18/2012	DATE - 1/20/2012	REVISED -							CONTRACT NO. 60F78		
										ILLINOIS FED. AID PROJECT		