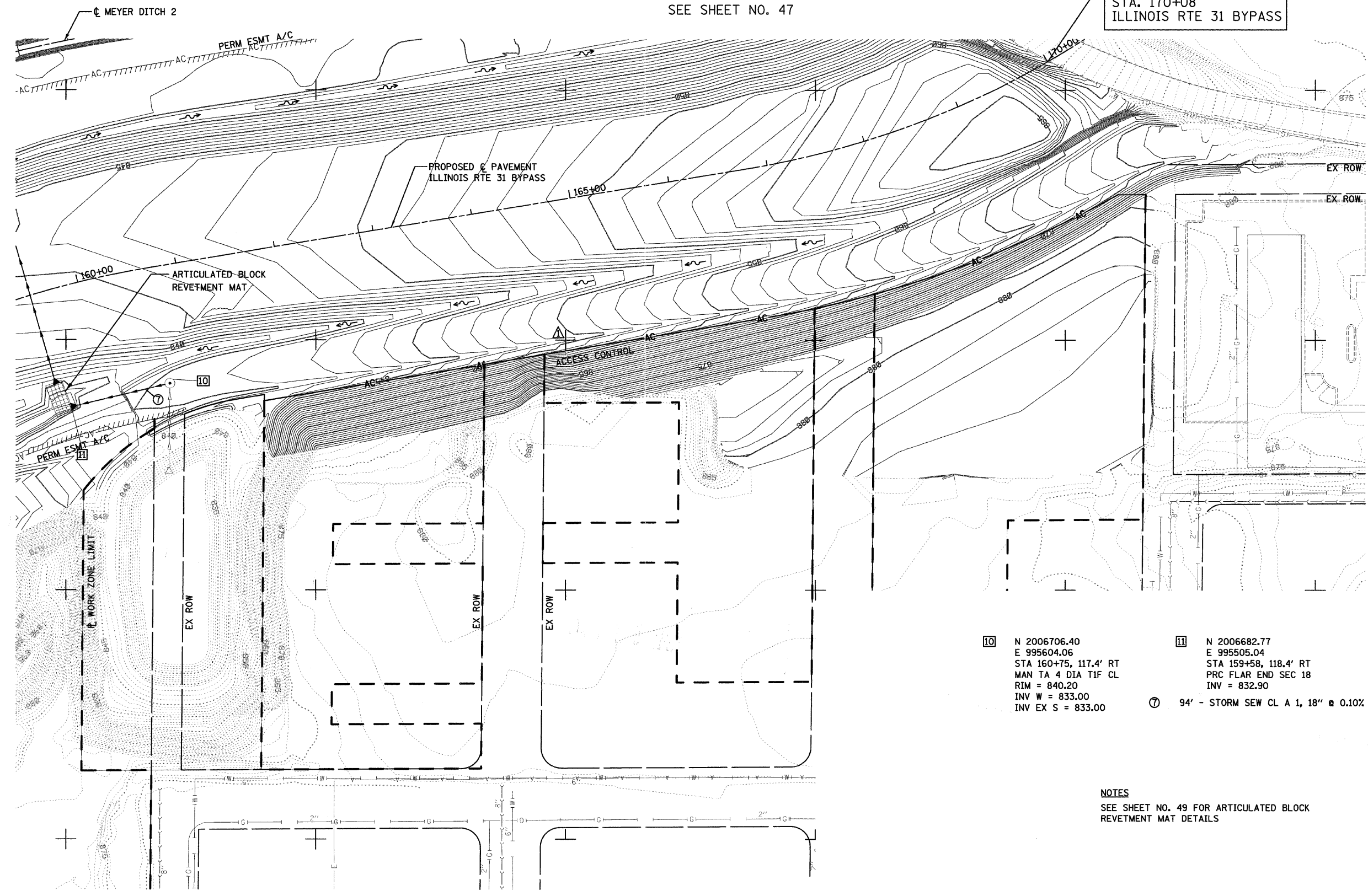


PROJECT ENDS  
STA. 170+08  
ILLINOIS RTE 31 BYPASS

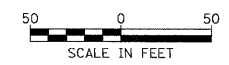
SEE SHEET NO. 47

SEE SHEET NO. 44



- ⑩ N 2006706.40  
E 995604.06  
STA 160+75, 117.4' RT  
MAN TA 4 DIA TIF CL  
RIM = 840.20  
INV W = 833.00  
INV EX S = 833.00
- ⑪ N 2006682.77  
E 995505.04  
STA 159+58, 118.4' RT  
PRC FLAR END SEC 18  
INV = 832.90
- ⑪ 94' - STORM SEW CL A 1, 18" @ 0.10%

**NOTES**  
SEE SHEET NO. 49 FOR ARTICULATED BLOCK  
REVTMENT MAT DETAILS



FILE NAME = ...ND160F78-shd-drawn-08.dgn	USER NAME = ctb	DESIGNED - DRAWN - CHECKED - PLOT DATE = 1/27/2012	REVISD - REVISED - REVISED - REVISED -	<b>STATE OF ILLINOIS DEPARTMENT OF TRANSPORTATION</b>	<b>DRAINAGE PLAN</b>		F.A. RTE.	SECTION	COUNTY	TOTAL SHEETS	SHEET NO.
					SCALE: 1" = 50'	SHEET NO. 9 OF 13 SHEETS	STA. TO STA.	18A-1	MOHENRY	115	45
							CONTRACT NO. 60F78 ILLINOIS FED. AID PROJECT				