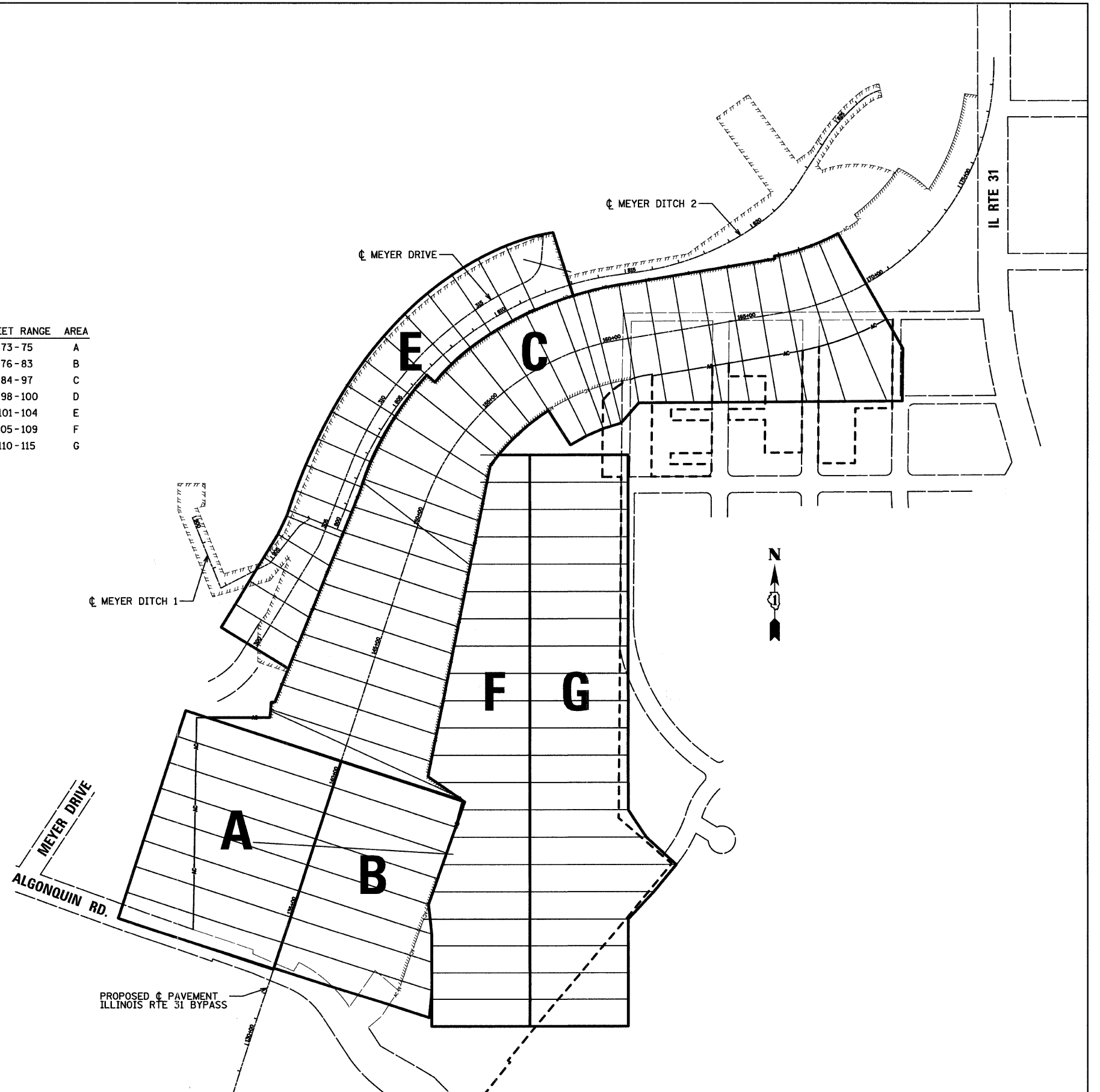


INDEX OF CROSS SECTIONS

DESCRIPTION	SHEET RANGE	AREA
PROPOSED ILLINOIS RTE 31, STA. 133+00 TO STA. 141+00, LEFT SIDE	73-75	A
PROPOSED ILLINOIS RTE 31, STA. 133+00 TO STA. 141+00, RIGHT SIDE	76-83	B
PROPOSED ILLINOIS RTE 31, STA. 142+00 TO STA. 170+00	84-97	C
CROSSING PIPES WITHIN PROPOSED ILLINOIS RTE 31 R.O.W.	98-100	D
MEYER DRIVE	101-104	E
PARCEL 1FH0021, WEST HALF	105-109	F
PARCEL 1FH0021, EAST HALF	110-115	G



FILE NAME =
...\\D160F78-sht-xsec00.dgn

USER NAME = etb
PLOT SCALE = 200.0000' / in.
PLOT DATE = 1/27/2012

DESIGNED - AKW	REVISED -
DRAWN - AKW	REVISED -
CHECKED - PML	REVISED -
DATE - 1/20/2012	REVISED -

**STATE OF ILLINOIS
DEPARTMENT OF TRANSPORTATION**

CROSS SECTION SHEET INDEX

SCALE: SHEET NO. OF SHEETS STA. TO STA.

F.A. RTE.	SECTION	COUNTY	TOTAL SHEETS	SHEET NO.
	18A-1	McHENRY	115	72
CONTRACT NO. 60F78				
ILLINOIS FED. AID PROJECT				