

FOR INDEX OF SHEETS, SEE SHEET NO. 2

**TRAFFIC DATA**

IL 176  
EXISTING ADT = 14,100- 19,100 (2007)  
SPEED LIMIT = 30-50 MPH

MIDLOTHIAN ROAD  
EXISTING ADT = 14,200-14,700  
SPEED LIMIT = 45-55 MPH

IL 59  
EXISTING ADT = 13,900-17,600  
SPEED LIMIT = 45-50 MPH

SHERIDAN ROAD  
EXISTING ADT = 19,200-20,200  
SPEED LIMIT = 40 MPH

IL 60  
EXISTING ADT = 7,000-18,800 (2007)  
SPEED LIMIT = 55 MPH

PETERSON ROAD  
EXISTING ADT = 17,00  
SPEED LIMIT = 50 MPH

IL 120  
EXISTING ADT = 16,100-17,600 (2007)  
SPEED LIMIT = 35-40 MPH

IL 22  
EXISTING ADT = 11,500-16,500 (2007)  
SPEED LIMIT = 45-50 MPH

IL 137  
EXISTING ADT = 15,600-32,000 (2007)  
SPEED LIMIT = 55 MPH

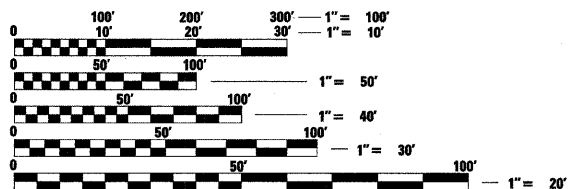
IL 83  
EXISTING ADT = 9,100-46,600 (2007)  
SPEED LIMIT = 45-50 MPH

IL 60/83  
EXISTING ADT = 17,500-21,700  
SPEED LIMIT = 35-40 MPH

STATE OF ILLINOIS  
DEPARTMENT OF TRANSPORTATION  
DIVISION OF HIGHWAYS  
**PROPOSED  
HIGHWAY PLANS**

VARIOUS ROUTES  
SECTION 2010-117-GRR  
VARIOUS LOCATIONS IN LAKE COUNTY  
GUARDRAIL IMPROVEMENTS  
PROJECT: HSIP-0005(863)  
LAKE COUNTY  
C-91-123-11

THE PROJECT IS LOCATED IN THE CITY OF WAUKEGAN AND IN THE VILLAGES OF BEACH PARK, GRAYSLAKE, GURNEE, HAWTHORN WOODS, KILDEER, LAKE BARRINGTON LONG GROVE, LIBERTYVILLE, MUNDELEIN, NORTH BARRINGTON, TOWER LAKES, VOLO, WAUCONDA

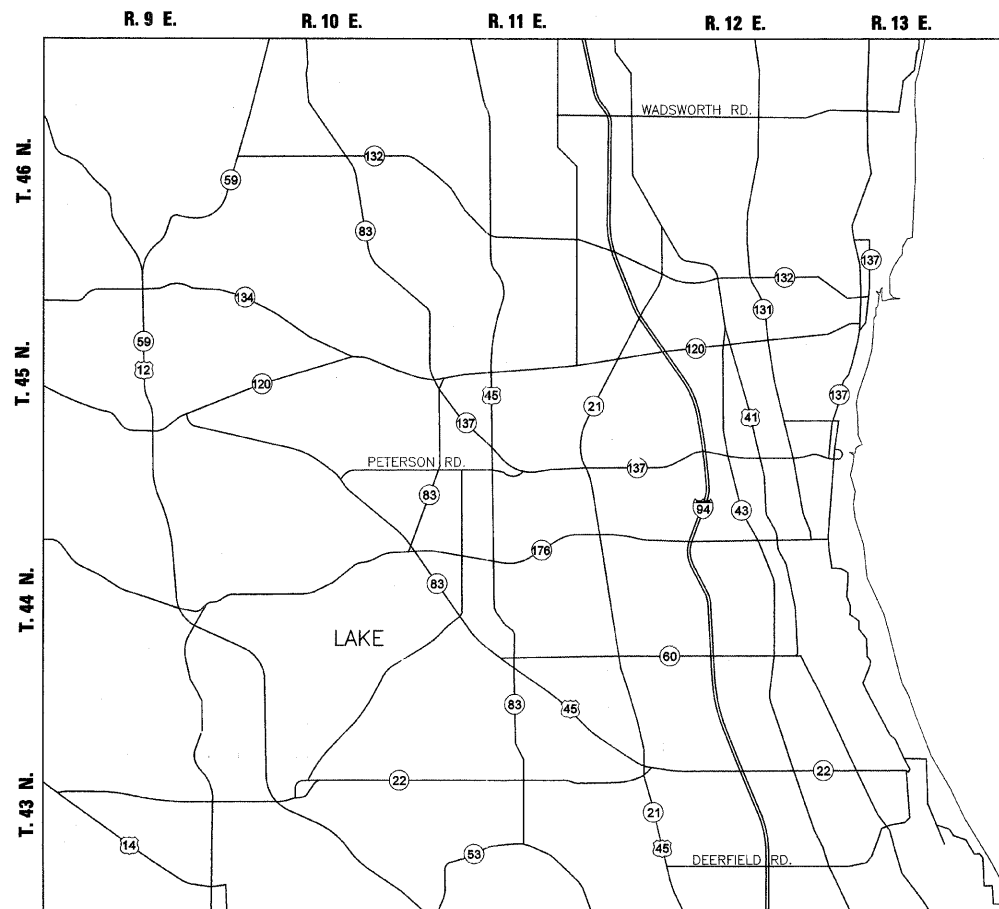


FULL SIZE PLANS HAVE BEEN PREPARED USING STANDARD ENGINEERING SCALES. REDUCED SIZED PLANS WILL NOT CONFORM TO STANDARD SCALES. IN MAKING MEASUREMENTS ON REDUCED PLANS, THE ABOVE SCALES MAY BE USED.

J.U.L.I.E.  
JOINT UTILITY LOCATION INFORMATION FOR EXCAVATION  
1-800-892-0123  
OR 811

PROJECT ENGINEER: PETER JOHNSTON (GRAEF) 773-399-0112  
PROJECT MANAGER: KEN ENG (IDOT) 847-705-4247

CONTRACT NO. 60M51



AVON, CUBA, FREMONT, GRANT, LIBERVILLE, WARREN, WAUKEGAN AND VERNON TOWNSHIPS

|             |              |          |                    |           |
|-------------|--------------|----------|--------------------|-----------|
| F.A.P. RTE. | SECTION      | COUNTY   | TOTAL SHEETS       | SHEET NO. |
| *           | 2010-117-GRR | LAKE     | 19                 | 1         |
|             |              | ILLINOIS | CONTRACT NO. 60M51 |           |

D-91-449-10 \*19 & 1 = 20



LOCATION OF SECTION INDICATED THUS: - - ■ - -

**GRAEF** 8501 W. Higgins Road, Suite 280  
Chicago, Illinois 60631  
(773) 399-0112



Peter M. Johnston  
SIGNATURE  
11-8-11  
DATE

LICENSE EXPIRES 11-30-2013

STATE OF ILLINOIS  
DEPARTMENT OF TRANSPORTATION  
DIVISION OF HIGHWAYS  
SUBMITTED December 9, 2011  
Diana M. O'Keefe  
DEPUTY DIRECTOR OF HIGHWAYS, REGION ENGINEER  
February 3, 2012  
John D. Brammelli, P.E.  
acting ENGINEER OF DESIGN AND ENVIRONMENT  
February 3, 2012  
William R. Fry  
acting DIRECTOR OF HIGHWAYS, CHIEF ENGINEER

Rev. 2-22-12  
**PRINTED BY THE AUTHORITY  
OF THE STATE OF ILLINOIS**

**INDEX OF SHEETS**

| SHEET NO. | DESCRIPTION   |
|-----------|---|
| 1         | COVER SHEET   |
| 2         | INDEX, HIGHWAY STANDARDS, AND GENERAL NOTES   |
| 3         | SUMMARY OF QUANTITIES   |
| 4         | LOCATION MAP  |
| 5-16      | ROADWAY PLAN  |
| 17        | CURB OR CURB AND GUTTER REMOVAL AND REPLACEMENT (BD24)                              |
| 18        | DETAILS FOR DEPRESSED CURB AND GUTTER AND SHOULDER TREATMENT AT TBT TY 1 SPL (BD34) |
| 19        | ARTERIAL ROAD INFORMATION SIGNING (TC22)  |

**19A. TRAFFIC CONTROL AND PROTECTION FOR SIDE ROADS INTERSECTIONS AND DRIVEWAYS (TC-10)**

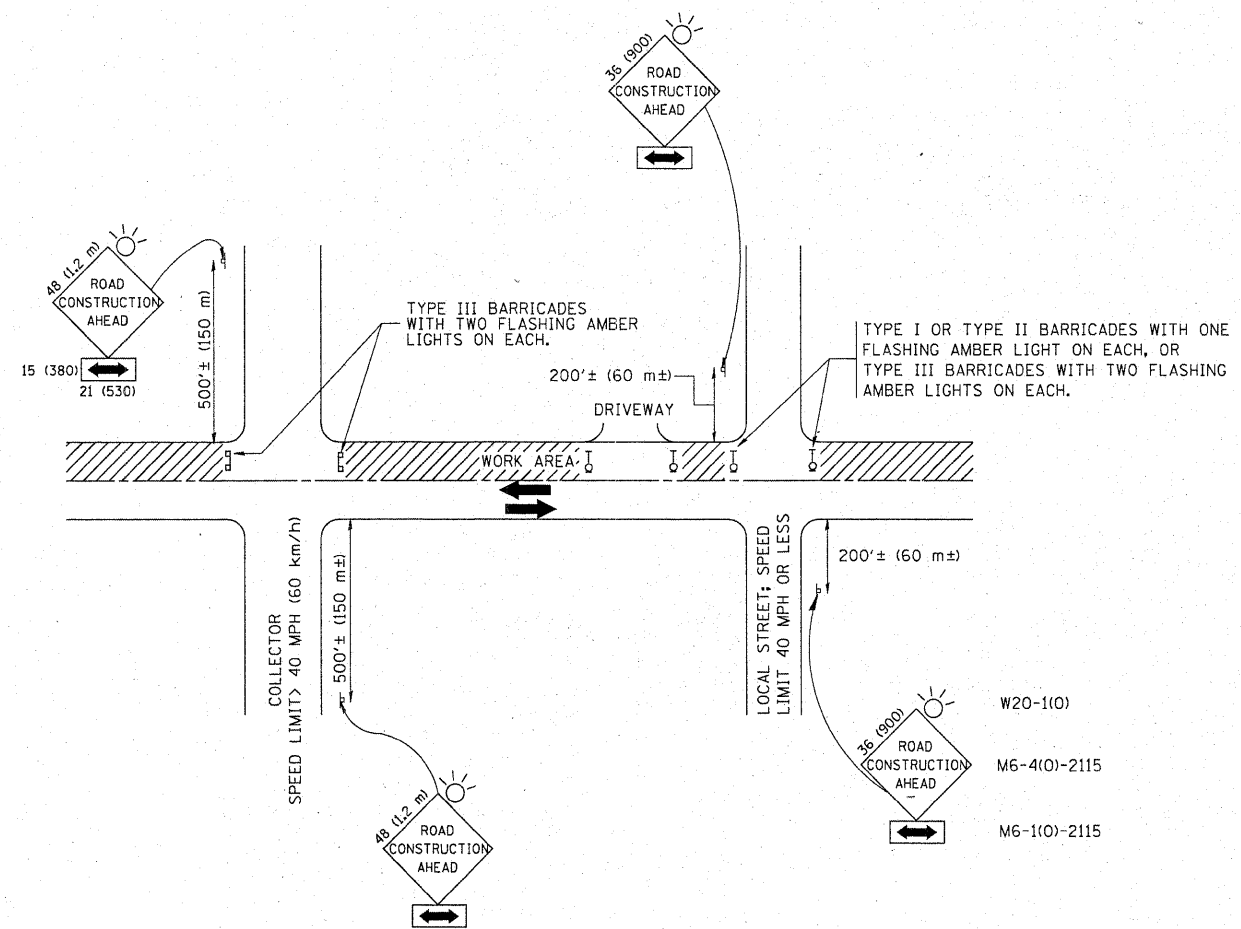
**HIGHWAY STANDARDS**

| STD. NO.  | TITLE  |
|-----------|--|
| 630001-10 | STEEL PLATE BEAM GUARDRAIL   |
| 630101-09 | GUARDRAIL MOUNTED ON EXISTING CULVERTS   |
| 630201-06 | PCC/HMA STABILIZATION AT STEEL PLATE BEAM GUARDRAIL                            |
| 630301-05 | SHOULDER WIDENING FOR TYPE 1 (SPECIAL) GUARDRAIL TERMINALS                     |
| 631011-08 | TRAFFIC BARRIER TERMINAL, TYPE 2   |
| 631031-10 | TRAFFIC BARRIER TERMINAL TYPE 6  |
| 635006-03 | REFLECTOR AND TERMINAL MARKER PLACEMENT  |
| 635011-02 | REFLECTOR MARKER AND MOUNTING DETAILS  |
| 701006-03 | OFF-ROAD OPERATIONS, 2L, 2W, 15' (4.5 m) TO 24" (600 mm) FROM PAVEMENT EDGE    |
| 701101-02 | OFF-ROAD OPERATIONS, MULTILANE, 15' (4.5 m) TO 24" (600 mm) FROM PAVEMENT EDGE |
| 701326-04 | LANE CLOSURE, 2L, 2W, PAVEMENT WIDENING, FOR SPEEDS ≥ 45 MPH                   |
| 701421-04 | LANE CLOSURE, MULTILANE, DAY OPERATIONS ONLY, FOR SPEEDS ≥ 45 MPH TO 55 MPH    |
| 701901-02 | TRAFFIC CONTROL DEVICES  |

**GENERAL NOTES**

- BEFORE STARTING ANY EXCAVATION, THE CONTRACTOR SHALL CALL "J.U.L.I.E." AT 800-892-0123 OR "CUAN" (CHICAGO UTILITY ALERT NETWORK), 312-744-7000 FOR FIELD LOCATIONS OF BURIED ELECTRIC, TELEPHONE AND GAS FACILITIES (48 HOUR NOTIFICATION IS REQUIRED).
- THE CONTRACTOR SHALL COORDINATE CONSTRUCTION ACTIVITIES WITH UTILITY COMPANIES AND LOCAL AGENCIES.
- THE CONTRACTOR WILL NOT BE ALLOWED TO SET UP A YARD OR FIELD OFFICE ON STATE PROPERTY WITHOUT WRITTEN PERMISSION FROM THE DEPARTMENT.
- THE RESIDENT ENGINEER SHALL CONTACT THE TRAFFIC CONTROL SUPERVISOR AT (847) 705-4470 A MINIMUM 72 HOURS PRIOR TO THE PLACEMENT OF ANY TEMPORARY TRAFFIC CONTROL DEVICES.
- WHEN GUARDRAIL POSTS ARE PLACED BEHIND CONCRETE HEADWALLS, THE POSTS SHALL NOT BE PLACED TO BLOCK THE DRAINAGE OPENING.

Rev. 2-22-12



TRAFFIC CONTROL AND PROTECTION FOR SIDE ROADS, INTERSECTIONS, AND DRIVEWAYS

NOTES:

- A. FOR NO LANE RESTRICTION ON THE SIDE ROAD OR DRIVEWAYS
  1. SIDE ROAD WITH A SPEED LIMIT OF 40 MPH (60 km/h) OR LESS AS SHOWN ON THE DRAWING AND AS DIRECTED BY THE ENGINEER:
    - a) ONE ROAD CONSTRUCTION AHEAD SIGN 36 x 36 (900x900) WITH A FLASHER AND FLAG MOUNTED ON IT APPROXIMATELY 200' (60 m) IN ADVANCE OF THE MAIN ROUTE.
    - b) THE CLOSED PORTION OF THE MAIN ROUTE SHALL BE PROTECTED BY BLOCKING WITH TYPE I, TYPE II OR TYPE III BARRICADES, 1/3 OF THE CROSS SECTION OF THE CLOSED PORTION.
  2. SIDE ROAD WITH A SPEED LIMIT GREATER THAN 40 MPH (60 km/h) AS SHOWN ON THE DRAWING AND AS DIRECTED BY THE ENGINEER:
    - a) ONE ROAD CONSTRUCTION AHEAD SIGN 48 x 48 (1.2 m x 1.2 m) WITH A FLASHER MOUNTED ON IT APPROXIMATELY 500' (150 m) IN ADVANCE OF THE MAIN ROUTE.
    - b) THE CLOSED PORTION OF THE MAIN ROUTE SHALL BE PROTECTED BY BLOCKING WITH TYPE III BARRICADES, 1/2 OF THE CROSS SECTION OF THE CLOSED PORTION.
  3. WHEN THE SIDE ROAD LIES BETWEEN THE BEGINNING OF THE MAINLINE SIGNING AND THE WORK ZONE, A SINGLE HEADED ARROW (M6-1) SHALL BE USED IN LIEU OF THE DOUBLE HEADED ARROW (M6-4).
- B. FOR A LANE CLOSURE ON A SIDE ROAD OR DRIVEWAY:
 

USE APPLICABLE PORTIONS OF THE TYPICAL APPLICATION OF TRAFFIC CONTROL DEVICES (STD. 701501, STD. 701606 OR THE APPROPRIATE STANDARD). THE SPACING OF SIGNS AND BARRICADES SHALL BE ADJUSTED FOR FIELD CONDITIONS AS DIRECTED BY THE ENGINEER. THE DIRECTIONAL ARROW SHALL BE COVERED OR REMOVED WHEN NO LONGER CONSISTENT WITH THE SIDE ROAD LANE CLOSURE.
- C. ADVANCE WARNING SIGNS ARE TO BE OMITTED ON DRIVEWAY UNLESS OTHERWISE NOTED.
- D. THE TRAFFIC CONTROL AND PROTECTION FOR SIDE ROADS, INTERSECTIONS, AND DRIVEWAYS SHALL BE INCIDENTAL TO THE COST OF SPECIFIED TRAFFIC CONTROL STANDARDS OR ITEMS.

All dimensions are in millimeters (inches) unless otherwise shown. \* VARIOUS ROUTES

Added Sheet 2-22-12

|  |                            |                |                                 |   |  |                         |           |                       |          |                  |                    |
|--|----------------------------|----------------|---------------------------------|---|--|-------------------------|-----------|-----------------------|----------|------------------|--------------------|
| FILE NAME =<br>W:\diststd\22x34\1010.dgn | USER NAME = geglencbt      | DESIGNED - LHA | REVISED - J. OBERLE 10-18-95    | <b>STATE OF ILLINOIS<br/>DEPARTMENT OF TRANSPORTATION</b> | <b>TRAFFIC CONTROL AND PROTECTION FOR<br/>SIDE ROADS, INTERSECTIONS, AND DRIVEWAYS</b> |                         | F.A. RTE. | SECTION               | COUNTY   | TOTAL SHEETS     | SHEET NO.          |
|  | PLOT SCALE = 50,000' / IN. | DRAWN -        | REVISED - A. HOUSEH 03-06-96    |   | SCALE: NONE  | SHEET NO. 1 OF 1 SHEETS | STA.      | 2010-117-GRR          | LAKE     | 19               | 19A                |
|  | PLOT DATE = 1/4/2008       | CHECKED -      | REVISED - A. HOUSEH 10-15-96    |   |  |                         | TO STA.   | TC-10                 |          |                  |                    |
|  |                            | DATE - 06-89   | REVISED - T. RAMMACHER 01-06-00 |   |  |                         |           | FED. ROAD DIST. NO. 1 | ILLINOIS | FED. AID PROJECT | CONTRACT NO. 60M51 |