

F.A.P. RTE.	SECTION	COUNTY	TOTAL SHEETS	SHEET NO.
370	2011-018-TS	COOK	22	1
FED. ROAD DIST. NO.	ILLINOIS	CONTRACT NO.	60P13	

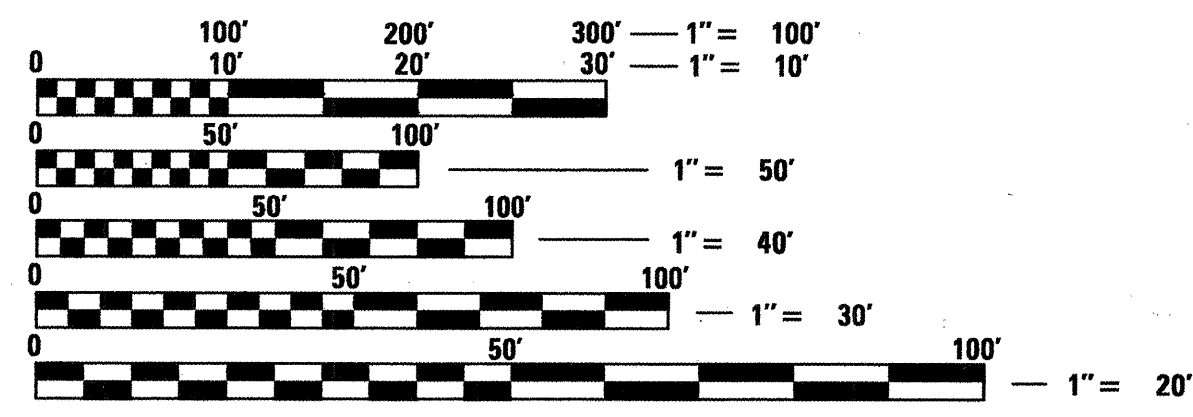
P-91-425-11
D-91-468-11

INDEX OF SHEETS

1. TITLE SHEET
2. GENERAL NOTES
3. SUMMARY OF QUANTITIES
- 4.-9. DISTRICT ONE STANDARD TRAFFIC SIGNAL DESIGN DETAILS
10. TEMPORARY TRAFFIC SIGNAL INSTALLATION AND REMOVAL PLAN DIXIE HIGHWAY AT 150TH STREET
11. TEMPORARY CABLE PLAN, TEMPORARY PHASE DESIGNATION DIAGRAM AND TEMPORARY EMERGENCY VEHICLE PREEMPTION SEQUENCE DIXIE HIGHWAY AT 150TH STREET
12. TRAFFIC SIGNAL INSTALLATION PLAN DIXIE HIGHWAY AT 150TH STREET
13. SCHEDULE OF QUANTITIES, CABLE PLAN, PHASE DESIGNATION DIAGRAM AND EMERGENCY VEHICLE PREEMPTION SEQUENCE DIXIE HIGHWAY AT 150TH STREET
14. TEMPORARY TRAFFIC SIGNAL INSTALLATION AND REMOVAL PLAN DIXIE HIGHWAY AT 154TH STREET
15. TEMPORARY CABLE PLAN, TEMPORARY PHASE DESIGNATION DIAGRAM AND TEMPORARY EMERGENCY VEHICLE PREEMPTION SEQUENCE DIXIE HIGHWAY AT 154TH STREET
16. TRAFFIC SIGNAL INSTALLATION PLAN DIXIE HIGHWAY AT 154TH STREET
17. SCHEDULE OF QUANTITIES, CABLE PLAN, PHASE DESIGNATION DIAGRAM AND EMERGENCY VEHICLE PREEMPTION SEQUENCE DIXIE HIGHWAY AT 154TH STREET
18. MAST ARM MOUNTED STREET NAME SIGNS DIXIE HIGHWAY AT 150TH STREET / 154TH STREET
19. TRAFFIC CONTROL AND PROTECTION FOR SIDE ROADS, INTERSECTIONS, AND DRIVEWAYS (TC-10)
20. TYPICAL APPLICATIONS - RAISED REFLECTIVE PAVEMENT MARKERS (SNOW-PLOW RESISTANT) (TC-11)
21. DISTRICT ONE - TYPICAL PAVEMENT MARKINGS (TC-13)
22. ARTERIAL ROAD INFORMATION SIGN (TC-22)

IDOT STANDARDS:

- 424001-00 CURB RAMPS FOR SIDEWALKS
- 606001-02 CONCRETE CURB TYPE B AND COMBINATION CONCRETE CURB AND GUTTER
- 701101-02 OFF-ROAD OPERATIONS, MULTILANE, 4.5 m (15') TO 600 mm (24") FROM PAVEMENT EDGE
- 701106-02 OFF-ROAD OPERATIONS, 2L, 2W, 4.5 m (15') TO 600 mm (24") FROM PAVEMENT EDGE
- 701501-00 URBAN LANE CLOSURE, 2L, 2W, UNDIVIDED
- 701701-00 URBAN LANE CLOSURE, MULTILANE INTERSECTION
- 701901-02 TRAFFIC CONTROL DEVICES
- 720001-01 SIGN PANEL MOUNTING DETAILS
- 814001-02 HANDHOLES
- 814006-02 DOUBLE HANDHOLES
- 857001-01 STANDARD PHASE DESIGNATION DIAGRAMS AND PHASE SEQUENCES
- 873001-02 TRAFFIC SIGNAL GROUNDING & BONDING
- 880001-01 SPAN WIRE MOUNTED SIGNALS AND FLASHING BEACON INSTALLATION
- 886001-01 DETECTOR LOOP INSTALLATION
- 862001-01 UNINTERRUPTIBLE POWER SUPPLY (UPS)
- 877001-05 STEEL MAST ARM ASSEMBLY AND POLE 16" THROUGH 55"
- 878001-09 CONCRETE FOUNDATION DETAILS
- 880006-01 TRAFFIC SIGNAL MOUNTING DETAILS



FULL SIZE PLANS HAVE BEEN PREPARED USING STANDARD ENGINEERING SCALES. REDUCED SIZED PLANS WILL NOT CONFORM TO STANDARD SCALES. IN MAKING MEASUREMENTS ON REDUCED PLANS, THE ABOVE SCALES MAY BE USED.

J.U.L.I.E.
JOINT UTILITY LOCATING INFORMATION FOR EXCAVATORS
1-800-892-0123
OR 811

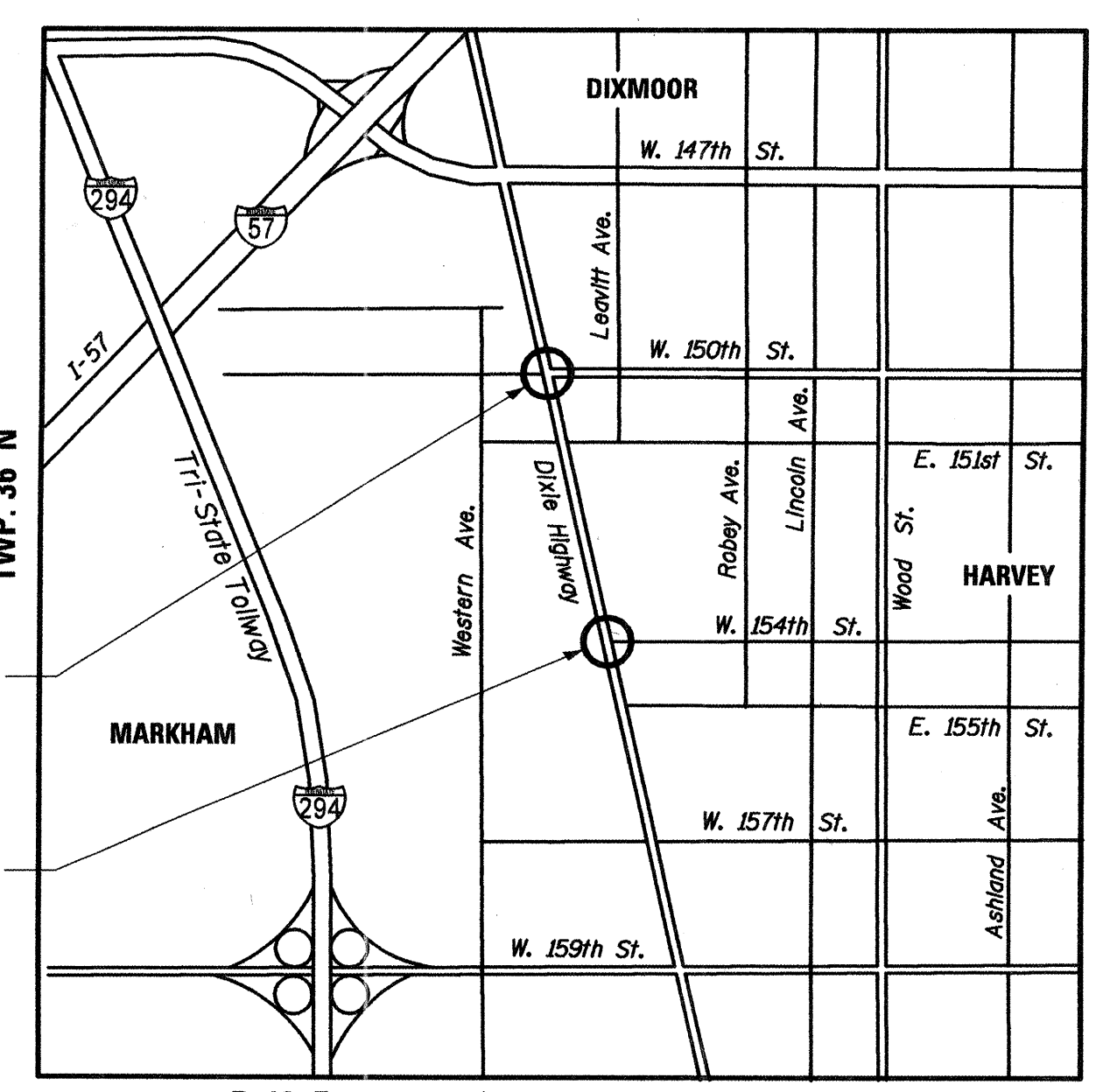
DISTRICT 1 NO. (847) 705-4000
PROJECT ENGINEER: IOVAN PLASCENCIA
UNIT CHIEF: DARYLE DREW
TOWNSHIP(S): THORNTON

CONTRACT NO. 60P13

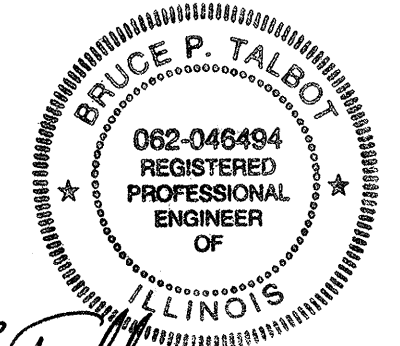
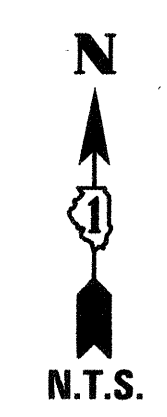
STATE OF ILLINOIS
DEPARTMENT OF TRANSPORTATION
DIVISION OF HIGHWAYS
**PLANS FOR PROPOSED
FEDERAL AID HIGHWAY**
DISTRICT 1
HIGHWAY SAFETY IMPROVEMENT PROJECT
DIXIE HIGHWAY AT
150TH STREET AND 154TH STREET
F.A.P. ROUTE 370 / DIXIE HIGHWAY
SECTION 2011-018-TS
COOK COUNTY *Proj. HSIP-0370(012)*
C-91-468-11



LOCATION OF SECTION INDICATED THUS: - [shaded box] -



LOCATION MAP



Bruce P. Talbot
Expires 11-30-13 DATE: 12-19-11

PREPARED BY:
CEMCON, Ltd.
Consulting Engineers, Land Surveyors & Planners
2280 White Oak Circle, Suite 100
Aurora, Illinois 60504-9675
Ph: 630.862.2100 Fax: 630.862.2199
E-Mail: cadd@cemcon.com Website: www.cemcon.com

STATE OF ILLINOIS
DEPARTMENT OF TRANSPORTATION
DIVISION OF HIGHWAYS

SUBMITTED *Dec 21* 20 *11*

Devin M. Skup
DEPUTY DIRECTOR OF HIGHWAYS, REGION ENGINEER

February 3 20 12
John D. Baranelli, P.E.
acting ENGINEER OF DESIGN AND ENVIRONMENT

February 3 20 12
William R. Fies
acting DIRECTOR OF HIGHWAYS, CHIEF ENGINEER

**PRINTED BY THE AUTHORITY
OF THE STATE OF ILLINOIS**

BUREAU OF TRAFFIC, DISTRICT ONE: STEPHEN TRAVIA / DARYLE DREW (847) 705-4424