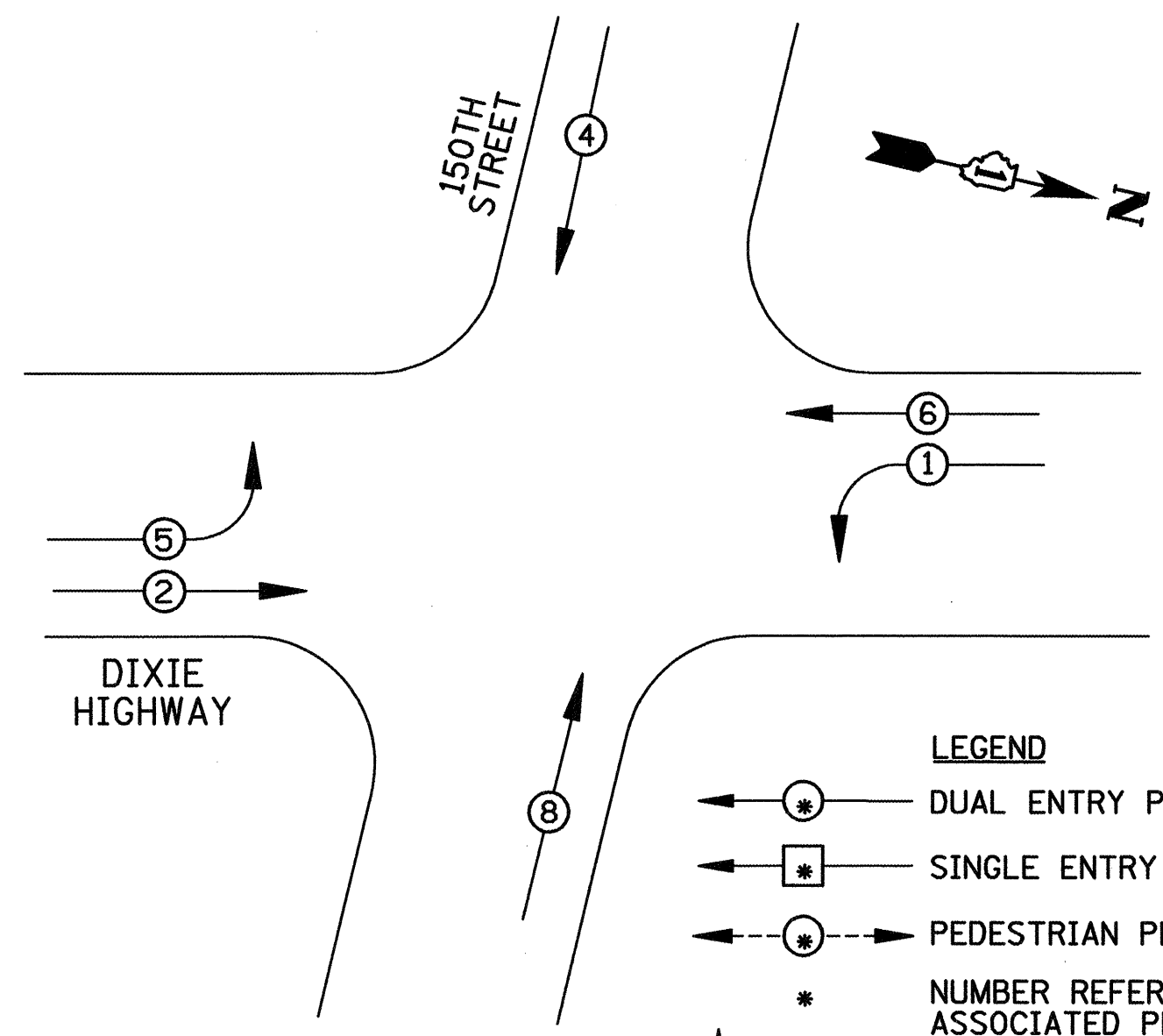
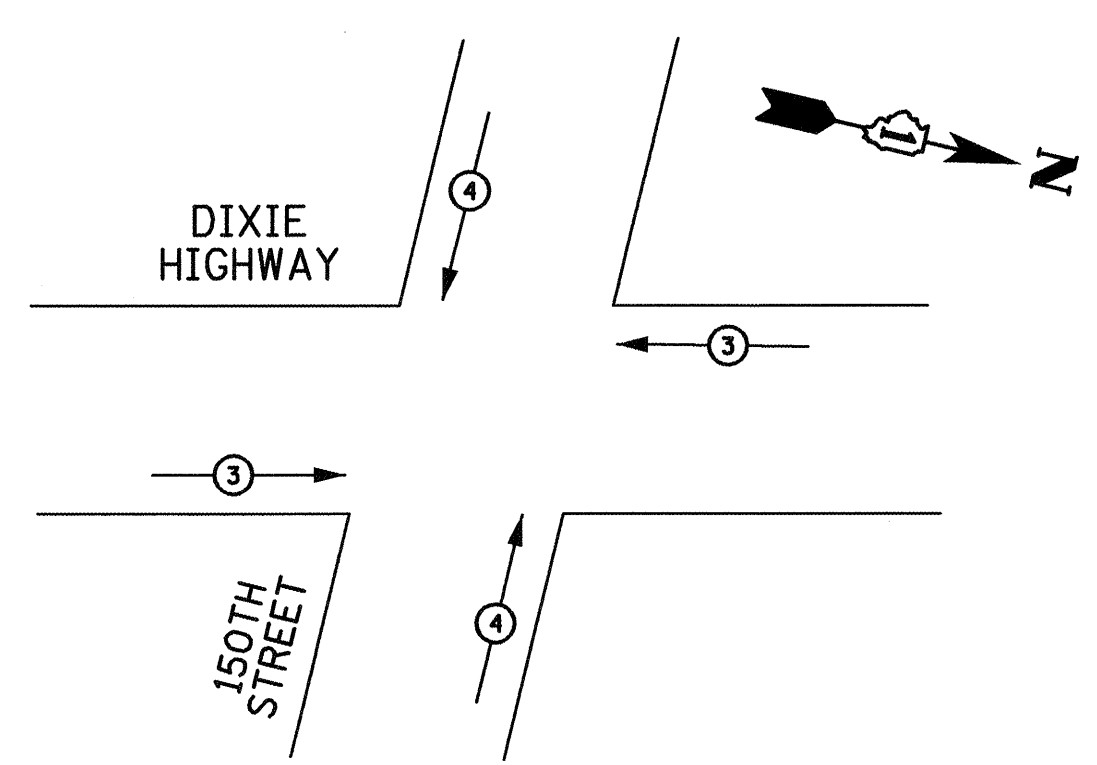


CONTROLLER SEQUENCE



RESTORATION OF WORK AREA
 RESTORATION OF THE TRAFFIC SIGNAL WORK AREA SHALL BE INCIDENTAL TO THE RELATED PAY ITEM SUCH AS FOUNDATION, CONDUIT, HANDHOLE, TRENCH AND BACKFILL, ETC., AND NO EXTRA COMPENSATION SHALL BE ALLOWED. ALL ROADWAY SURFACES SUCH AS SHOULDERS, MEDIANS, SIDEWALKS, PAVEMENT, ETC. SHALL BE REPLACED IN KIND. ALL DAMAGE TO MOWED LAWNS SHALL BE REPLACED WITH AN APPROVED SOD, AND ALL DAMAGE TO UNMOWED FIELDS SHALL BE SEED IN ACCORDANCE WITH STANDARD SPECIFICATIONS 252 AND 250 RESPECTIVELY.

PHASE DESIGNATION DIAGRAM

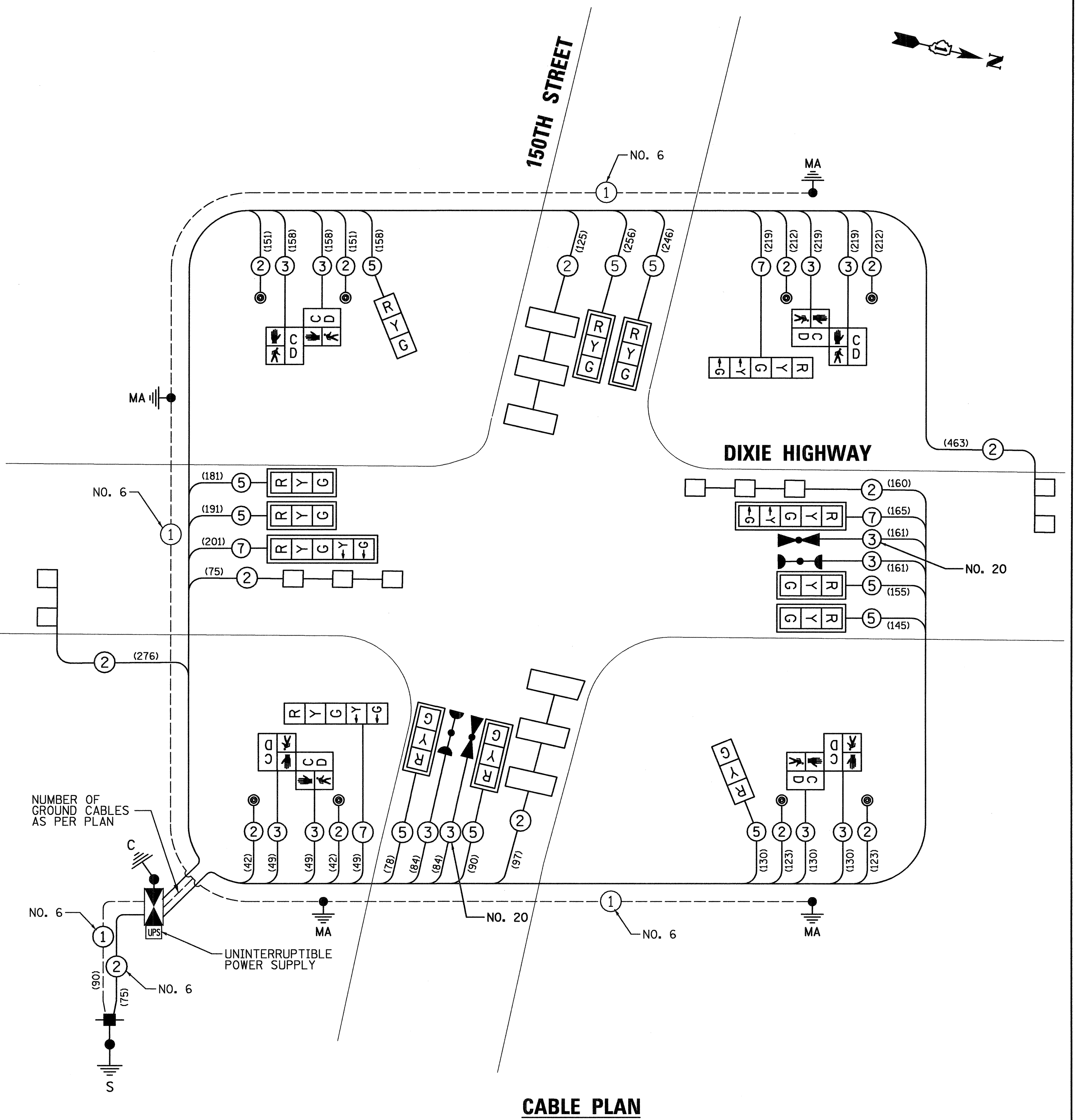


PROPOSED EMERGENCY VEHICLE PREEMPTORS		
EMERGENCY VEHICLE PREEMPTOR	3	4
MOVEMENT	← →	↑ ↓

EMERGENCY VEHICLE PREEMPTION SEQUENCE

SCHEDULE OF QUANTITIES

ITEM	UNIT	QUANTITY
EARTH EXCAVATION	CU YD	11.0
SUBBASE GRANULAR MATERIAL, TYPE B 4"	SQ YD	44
PROTECTIVE COAT	SQ YD	68.2
PORTLAND CEMENT CONCRETE SIDEWALK 5 INCH	SQ FT	500
DETECTABLE WARNINGS	SQ FT	80
COMBINATION CURB AND GUTTER REMOVAL	FOOT	76
SIDEWALK REMOVAL	SQ FT	266
COMBINATION CONCRETE CURB AND GUTTER, TYPE B-6.12	FOOT	76
SIGN PANEL - TYPE 1	SQ FT	28.5
THERMOPLASTIC PAVEMENT MARKING - LINE 6"	FOOT	417
THERMOPLASTIC PAVEMENT MARKING - LINE 24"	FOOT	108
SERVICE INSTALLATION - POLE MOUNTED	EACH	1
UNDERGROUND CONDUIT, GALVANIZED STEEL, 2" DIA.	FOOT	667
UNDERGROUND CONDUIT, GALVANIZED STEEL, 3" DIA.	FOOT	51
UNDERGROUND CONDUIT, GALVANIZED STEEL, 4" DIA.	FOOT	328
HANDHOLE	EACH	4
HEAVY DUTY HANDHOLE	EACH	2
DOUBLE HANDHOLE	EACH	2
FULL-ACTUATED CONTROLLER AND TYPE IV CABINET	EACH	1
ELECTRIC CABLE IN CONDUIT, SIGNAL NO. 14 2C	FOOT	1056
ELECTRIC CABLE IN CONDUIT, SIGNAL NO. 14 3C	FOOT	1357
ELECTRIC CABLE IN CONDUIT, SIGNAL NO. 14 5C	FOOT	1630
ELECTRIC CABLE IN CONDUIT, SIGNAL NO. 14 7C	FOOT	634
ELECTRIC CABLE IN CONDUIT, LEAD-IN, NO. 14 1 PAIR	FOOT	1196
ELECTRIC CABLE IN CONDUIT, SERVICE, NO. 6 2C	FOOT	75
ELECTRIC CABLE IN CONDUIT, EQUIPMENT GROUNDING CONDUCTOR, NO. 6 1C	FOOT	580
STEEL MAST ARM ASSEMBLY AND POLE, 30 FT.	EACH	1
STEEL MAST ARM ASSEMBLY AND POLE, 32 FT.	EACH	1
STEEL MAST ARM ASSEMBLY AND POLE, 36 FT.	EACH	1
STEEL MAST ARM ASSEMBLY AND POLE, 38 FT.	EACH	1
CONCRETE FOUNDATION, TYPE C	FOOT	4
CONCRETE FOUNDATION, TYPE E 36-INCH DIAMETER	FOOT	44
SIGNAL HEAD, LED, 1-FACE, 3-SECTION, MAST-ARM MOUNTED	EACH	8
SIGNAL HEAD, LED, 1-FACE, 3-SECTION, BRACKET MOUNTED	EACH	2
SIGNAL HEAD, LED, 1-FACE, 5-SECTION, BRACKET MOUNTED	EACH	2
SIGNAL HEAD, LED, 1-FACE, 5-SECTION, MAST-ARM MOUNTED	EACH	2
PEDESTRIAN SIGNAL HEAD, LED, 2-FACE, BRACKET MOUNTED WITH COUNTDOWN TIMER	EACH	4
TRAFFIC SIGNAL BACKPLATE, LOUVERED, ALUMINUM	EACH	10
INDUCTIVE LOOP DETECTOR	EACH	6
DETECTOR LOOP, TYPE 1	FOOT	570
• LIGHT DETECTOR	EACH	2
• LIGHT DETECTOR AMPLIFIER	EACH	1
PEDESTRIAN PUSH BUTTON	EACH	8
TEMPORARY TRAFFIC SIGNAL INSTALLATION	EACH	1
REMOVE EXISTING TRAFFIC SIGNAL EQUIPMENT	EACH	1
REMOVE EXISTING HANDHOLE	EACH	8
REMOVE EXISTING CONCRETE FOUNDATION	EACH	9
UNINTERRUPTIBLE POWER SUPPLY, SPECIAL	EACH	1
• ELECTRIC CABLE IN CONDUIT, NO. 20 3/C, TWISTED, SHIELDED	FOOT	245
TEMPORARY TRAFFIC SIGNAL TIMING	EACH	1
• 100% OF COST TO THE HARVEY FIRE DEPARTMENT		



CABLE PLAN

NOTE:
 (XXX) DENOTES CABLE LENGTH TO CONTROLLER CABINET WITH SLACK CABLE.

I.D.O.T. TRAFFIC SIGNAL INSTALLATION ELECTRICAL SERVICE REQUIREMENTS					TOTAL WATTAGE
TYPE	NO. LAMPS	WATTAGE INCAND.	LED	%OPERATION	
SIGNAL (RED)	14	135	17	0.50	119
(YELLOW)	14	135	25	0.25	87.5
(GREEN)	14	135	15	0.25	52.5
ARROW	8	135	12	0.10	9.6
PED. SIGNAL	8	90	25	1.00	200
CONTROLLER	1	100	100	1.00	100
ILLUM. SIGN		84		0.05	
FLASHER		135	25	0.50	
ENERGY COSTS TO:				TOTAL =	568.6
CITY OF HARVEY 15320 BROADWAY AVENUE HARVEY, IL 60426					
ENERGY SUPPLY CONTACT:	KATHRYN SUGRUE (708) 235-2337 PHONE: COMED COMPANY:				

FILE NAME = \MICROST\352096\ DIXIE @ 150TH CAB.DGN	USER NAME = JGC	DESIGNED - BPT	REVISED -
PLOT SCALE = 1"=20'	PLOT DATE = 12-6-11	DRAWN - RDS/JGC	REVISED -
		CHECKED - BPT	REVISED -
		DATE - 12-6-11	REVISED -

**STATE OF ILLINOIS
 DEPARTMENT OF TRANSPORTATION**

**SCHEDULE OF QUANTITIES, CABLE PLAN, PHASE DESIGNATION DIAGRAM AND EMERGENCY VEHICLE PREEMPTION SEQUENCE
 DIXIE HIGHWAY AT 150TH STREET**
 SCALE: N.T.S. SHEET NO. OF SHEETS STA. TO STA.

PREPARED BY:
CEMCON, Ltd.
 Consulting Engineers, Land Surveyors & Planners
 2280 White Oak Circle, Suite 100
 Aurora, Illinois 60504-9875
 Ph: 630.862.2100 Fax: 630.862.2199
 E-Mail: cadd@cemcon.com Website: www.cemcon.com

F.A.P. RTE.	SECTION	COUNTY	TOTAL SHEETS	SHEET NO.
370	2011-018-TS	COOK	22	13

CONTRACT NO. 60P13
 FED. ROAD DIST. NO. ILLINOIS FED. AID PROJECT