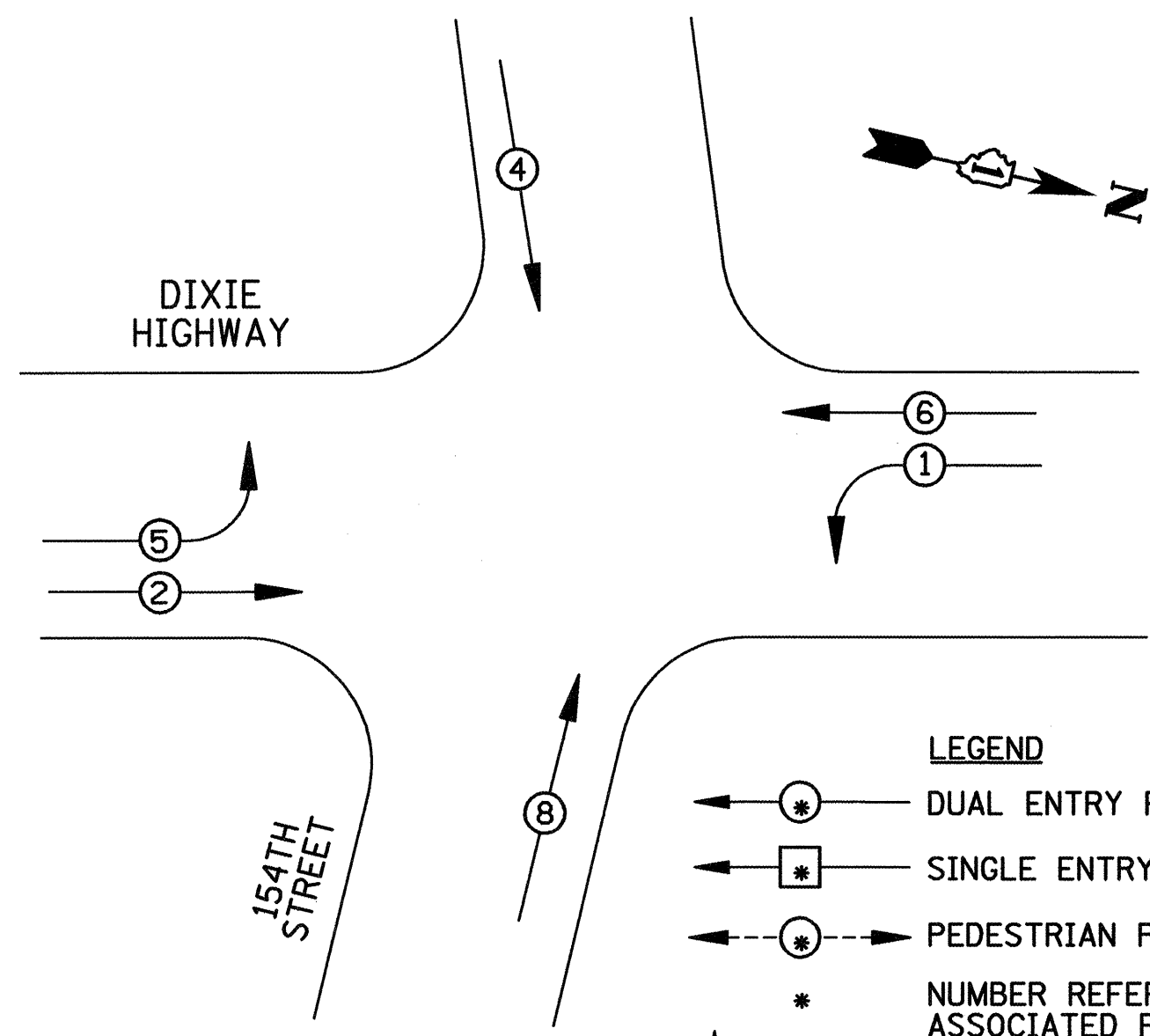


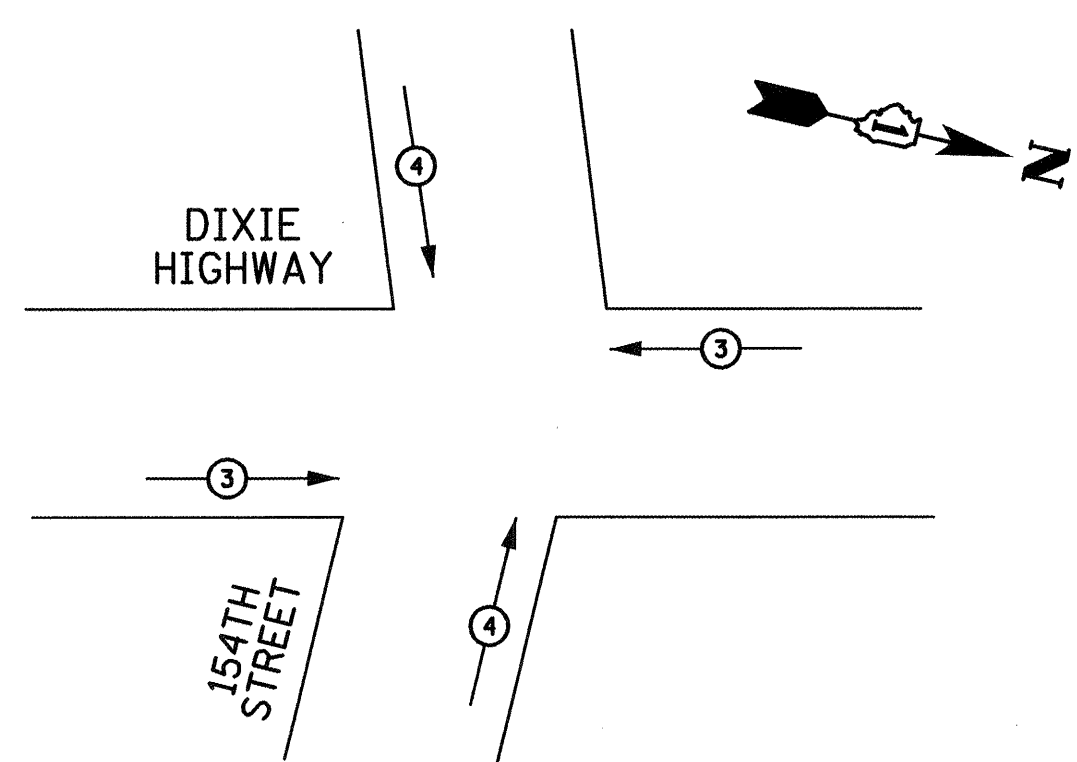
CONTROLLER SEQUENCE



RESTORATION OF WORK AREA
 RESTORATION OF THE TRAFFIC SIGNAL WORK AREA SHALL BE INCIDENTAL TO THE RELATED PAY ITEM SUCH AS FOUNDATION, CONDUIT, HANDHOLE, TRENCH AND BACKFILL, ETC., AND NO EXTRA COMPENSATION SHALL BE ALLOWED. ALL ROADWAY SURFACES SUCH AS SHOULDERS, MEDIANS, SIDEWALKS, PAVEMENT, ETC. SHALL BE REPLACED IN KIND. ALL DAMAGE TO MOWED LAWNS SHALL BE REPLACED WITH AN APPROVED SOD, AND ALL DAMAGE TO UNMOWED FIELDS SHALL BE SEEDED IN ACCORDANCE WITH STANDARD SPECIFICATIONS 252 AND 250 RESPECTIVELY.

- LEGEND**
- ⊙ DUAL ENTRY PHASE
 - ⊠ SINGLE ENTRY PHASE
 - ⊙ PEDESTRIAN PHASE
 - * NUMBER REFERS TO ASSOCIATED PHASE
 - OL OVERLAP

PHASE DESIGNATION DIAGRAM



PROPOSED EMERGENCY VEHICLE PREEMPTORS			
EMERGENCY VEHICLE PREEMPTOR	3	4	
MOVEMENT	⇐	⇐⇐	

EMERGENCY VEHICLE PREEMPTION SEQUENCE

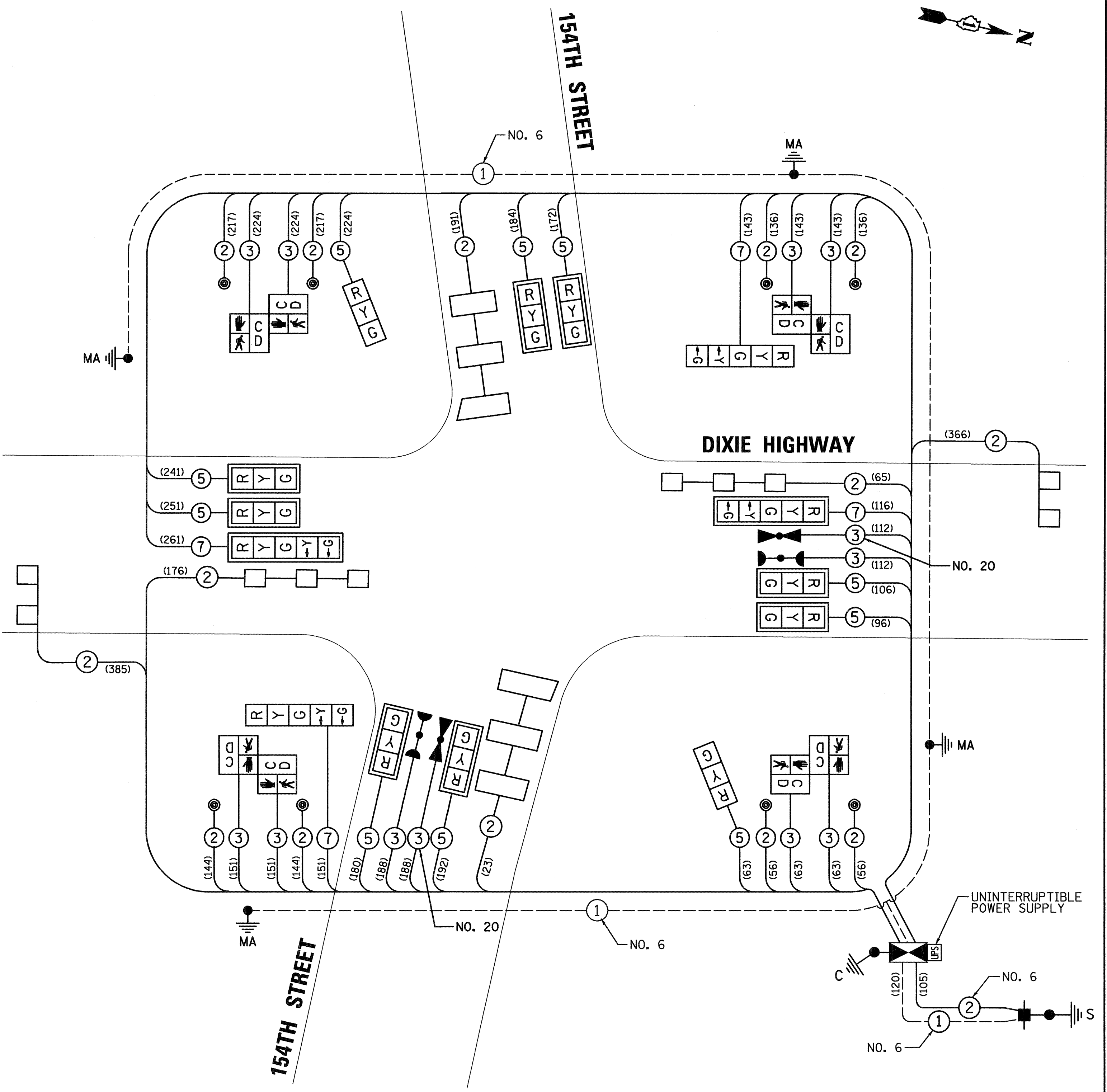
I.D.O.T. TRAFFIC SIGNAL INSTALLATION ELECTRICAL SERVICE REQUIREMENTS					TOTAL WATTAGE
TYPE	NO. LAMPS	WATTAGE INCAND.	LED	%OPERATION	
SIGNAL (RED)	14	135	17	0.50	119
(YELLOW)	14	135	25	0.25	87.5
(GREEN)	14	135	15	0.25	52.5
ARROW	8	135	12	0.10	9.6
PED. SIGNAL	8	90	25	1.00	200
CONTROLLER	1	100	100	1.00	100
ILLUM. SIGN		84		0.05	
FLASHER		135	25	0.50	
ENERGY COSTS TO:					TOTAL =
CITY OF HARVEY 15320 BROADWAY AVENUE HARVEY, IL 60426					568.6

ENERGY SUPPLY CONTACT: KATHRYN SUGRUE
 (708) 235-2337
 PHONE: COMED
 COMPANY:

SCHEDULE OF QUANTITIES

ITEM	UNIT	QUANTITY
EARTH EXCAVATION	CU YD	1.9
SUBBASE GRANULAR MATERIAL, TYPE B 4"	SQ YD	7.4
PROTECTIVE COAT	SQ YD	58.7
PORTLAND CEMENT CONCRETE SIDEWALK 5 INCH	SQ FT	402
DETECTABLE WARNINGS	SQ FT	80
COMBINATION CURB AND GUTTER REMOVAL	FOOT	84
SIDEWALK REMOVAL	SQ FT	335
COMBINATION CONCRETE CURB AND GUTTER, TYPE B-6.12	FOOT	84
SIGN PANEL - TYPE 1	SQ FT	28.5
THERMOPLASTIC PAVEMENT MARKING - LINE 6"	FOOT	435
THERMOPLASTIC PAVEMENT MARKING - LINE 24"	FOOT	113
SERVICE INSTALLATION - POLE MOUNTED	EACH	1
UNDERGROUND CONDUIT, GALVANIZED STEEL, 2" DIA.	FOOT	662
UNDERGROUND CONDUIT, GALVANIZED STEEL, 3" DIA.	FOOT	58
UNDERGROUND CONDUIT, GALVANIZED STEEL, 4" DIA.	FOOT	346
HANDHOLE	EACH	4
HEAVY DUTY HANDHOLE	EACH	2
DOUBLE HANDHOLE	EACH	2
FULL-ACTUATED CONTROLLER AND TYPE IV CABINET	EACH	1
ELECTRIC CABLE IN CONDUIT, SIGNAL NO. 14 2C	FOOT	1106
ELECTRIC CABLE IN CONDUIT, SIGNAL NO. 14 3C	FOOT	1462
ELECTRIC CABLE IN CONDUIT, SIGNAL NO. 14 5C	FOOT	1709
ELECTRIC CABLE IN CONDUIT, SIGNAL NO. 14 7C	FOOT	671
ELECTRIC CABLE IN CONDUIT, LEAD-IN, NO. 14 1 PAIR	FOOT	1206
ELECTRIC CABLE IN CONDUIT, SERVICE, NO. 6 2C	FOOT	105
ELECTRIC CABLE IN CONDUIT, EQUIPMENT GROUNDING CONDUCTOR, NO. 6 1C	FOOT	625
STEEL MAST ARM ASSEMBLY AND POLE, 32 FT.	EACH	1
STEEL MAST ARM ASSEMBLY AND POLE, 36 FT.	EACH	2
STEEL MAST ARM ASSEMBLY AND POLE, 48 FT.	EACH	1
CONCRETE FOUNDATION, TYPE C	FOOT	4
CONCRETE FOUNDATION, TYPE E 36-INCH DIAMETER	FOOT	46
SIGNAL HEAD, LED, 1-FACE, 3-SECTION, MAST-ARM MOUNTED	EACH	8
SIGNAL HEAD, LED, 1-FACE, 3-SECTION, BRACKET MOUNTED	EACH	2
SIGNAL HEAD, LED, 1-FACE, 5-SECTION, BRACKET MOUNTED	EACH	2
SIGNAL HEAD, LED, 1-FACE, 5-SECTION, MAST-ARM MOUNTED	EACH	2
PEDESTRIAN SIGNAL HEAD, LED, 2-FACE, BRACKET MOUNTED WITH COUNTDOWN TIMER	EACH	4
TRAFFIC SIGNAL BACKPLATE, LOUVERED, ALUMINUM	EACH	10
INDUCTIVE LOOP DETECTOR	EACH	6
DETECTOR LOOP, TYPE 1	FOOT	555
* LIGHT DETECTOR	EACH	2
* LIGHT DETECTOR AMPLIFIER	EACH	1
PEDESTRIAN PUSH BUTTON	EACH	8
TEMPORARY TRAFFIC SIGNAL INSTALLATION	EACH	1
REMOVE EXISTING TRAFFIC SIGNAL EQUIPMENT	EACH	1
REMOVE EXISTING HANDHOLE	EACH	7
REMOVE EXISTING CONCRETE FOUNDATION	EACH	9
UNINTERRUPTIBLE POWER SUPPLY, SPECIAL	EACH	1
* ELECTRIC CABLE IN CONDUIT, NO. 20 3/C, TWISTED, SHIELDED	FOOT	300
TEMPORARY TRAFFIC SIGNAL TIMING	EACH	1
*100% OF COST TO THE HARVEY FIRE DEPARTMENT		

CABLE PLAN



NOTE:
 (XXX) DENOTES CABLE LENGTH TO CONTROLLER CABINET WITH SLACK CABLE.

FILE NAME = \MICROST\352096\ DIXIE @ 154TH CAB.DGN
 USER NAME = JGC
 PLOT SCALE = 1"=20'
 PLOT DATE = 12-6-11

DESIGNED - BPT
 DRAWN - JGC
 CHECKED - BPT
 DATE - 12-6-11

REVISED -
 REVISED -
 REVISED -
 REVISED -

SCHEDULE OF QUANTITIES, CABLE PLAN, PHASE DESIGNATION DIAGRAM AND EMERGENCY VEHICLE PREEMPTION SEQUENCE
DIXIE HIGHWAY AT 154TH STREET
 SCALE: N.T.S. SHEET NO. OF SHEETS STA. TO STA.

PREPARED BY:
CEMCON, Ltd.
 Consulting Engineers, Land Surveyors & Planners
 2280 White Oak Circle, Suite 100
 Aurora, Illinois 60504-9675
 Ph: 630.862.2100 Fax: 630.862.2199
 E-Mail: cadd@cemcon.com Website: www.cemcon.com

F.A.P. RTE. 370	SECTION 2011-018-TS	COUNTY COOK	TOTAL SHEETS 22	SHEET NO. 17
FED. ROAD DIST. NO. ILLINOIS FED. AID PROJECT			CONTRACT NO. 60P13	