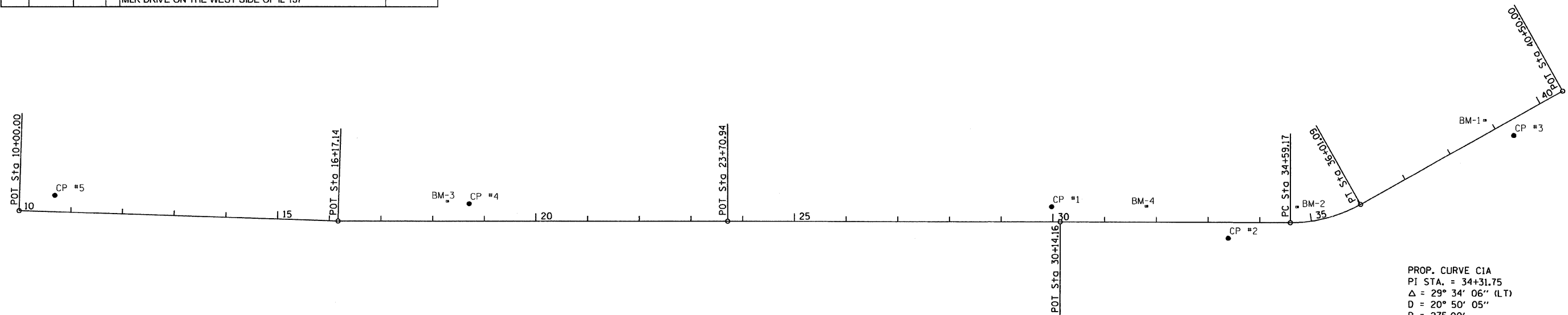
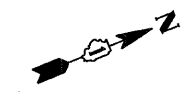
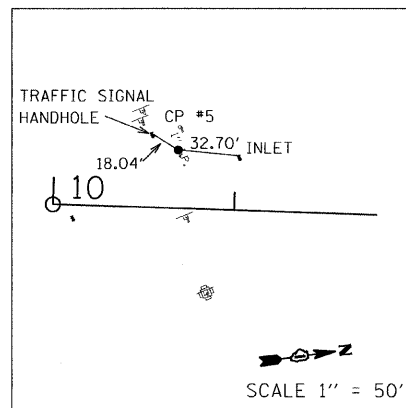


BENCH MARKS

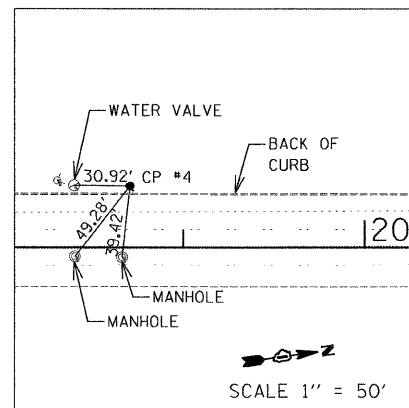
BM #	LOCATION		DESCRIPTION	ELEVATION
	STATION	OFFSET		
1	38+83.0	29.7' LT	CUT CROSS IN TOP SOUTHEAST BOLT IN BASE FOR TRAFFIC SIGNAL WITH MAST ARM AT THE SOUTHWEST CORNER OF IL 137 AND 18TH STREET	663.57
2	34+72.3	29.7' LT	CUT CROSS IN SOUTHWEST FLANGE BOLTON FIRE HYDRANT IN THE SOUTHWEST CORNER OF IL 137 AND BROADWAY	662.40
3	31+80.9	30.8' LT	CUT SQUARE AT THE NORTHEAST CORNER OF CONCRETE WALL AT THE NORTHWEST CORNER OF BRIDGE	661.29
4	18+30.6	37.2' LT	CUT CROSS IN FLANGE BOLT OF 2ND HYDRANT NORTH OF MLK DRIVE ON THE WEST SIDE OF IL 137	651.68



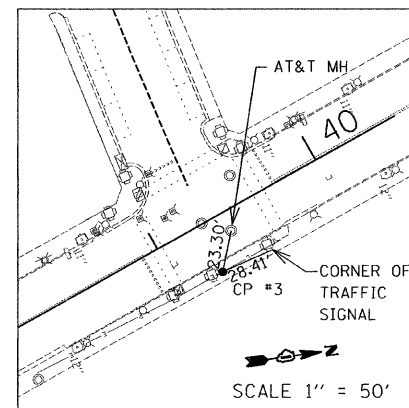
PROP. CURVE CIA  
 PI STA. = 34+31.75  
 $\Delta$  = 29° 34' 06" (LT)  
 D = 20° 50' 05"  
 R = 275.00'  
 T = 72.58'  
 L = 141.92'  
 E = 9.42'  
 e = -----  
 T.R. = -----  
 S.E. RUN = -----  
 P.C. STA = 33+59.17  
 P.T. STA = 35+01.09



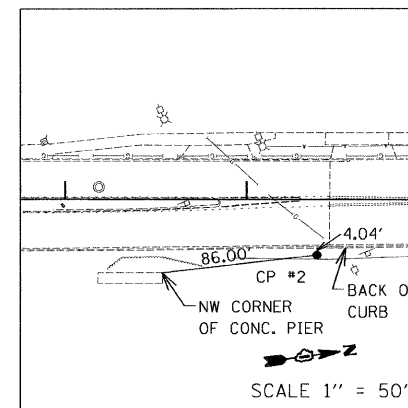
**CONTROL POINT #5**  
 SET PK NAIL IN ASPHALT WALK  
 STATION 10+68.12, 32.21' LT.  
 N 2,059,424.20  
 E 1,116,903.28  
 ELEVATION: 650.39'



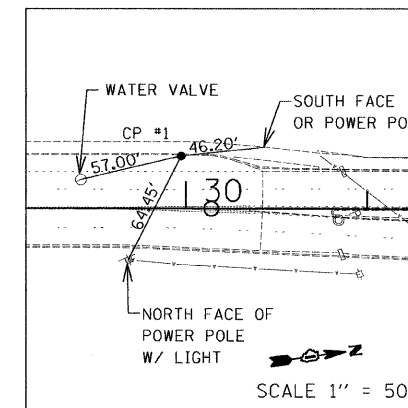
**CONTROL POINT #4**  
 SET PK NAIL IN ASPHALT WALK  
 STATION 18+70.64, 33.82' LT.  
 N 2,060,159.25  
 E 1,117,222.44  
 ELEVATION: 649.66'



**CONTROL POINT #3**  
 CHISELED 'X' IN CONCRETE WALK  
 STATION 39+25.08, 28.70' RT.  
 N 2,062,078.99  
 E 1,117,866.89  
 ELEVATION: 664.13'



**CONTROL POINT #2**  
 SET REBAR IN GRASS ON EAST  
 STATION 33+39.10, 30.60' RT.  
 N 2,061,492.20  
 E 1,117,841.99  
 ELEVATION: 658.50'



**CONTROL POINT #1**  
 SET PK NAIL IN ASPHALT SHOULDER  
 STATION 29+97.57, 29.14' LT.  
 N 2,061,199.45  
 E 1,117,656.22  
 ELEVATION: 656.24'

FILE NAME =	USER NAME = .USER.	DESIGNED - SRC	REVISED -
#FILE#		DRAWN - SRC	REVISED -
	PLOT SCALE = 100.0000' / IN.	CHECKED - RS	REVISED -
	PLOT DATE = 12/12/2011	DATE - 12-12-2011	REVISED -

STATE OF ILLINOIS  
 DEPARTMENT OF TRANSPORTATION

IL 137 - 18th STREET TO MARTIN LUTHER KING DRIVE  
 ALIGNMENT AND TIE

SCALE: 100 SHEET NO. 1 OF 1 SHEETS STA. TO STA.

F.A.P. RTE.	SECTION	COUNTY	TOTAL SHEETS	SHEET NO.
352	2011-023-I	LAKE	15	6
CONTRACT NO. 60P23			ILLINOIS FED. AID PROJECT	