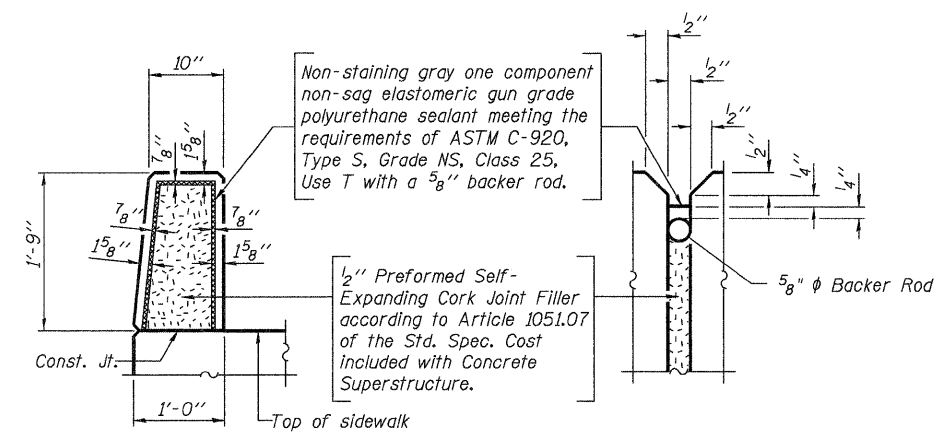
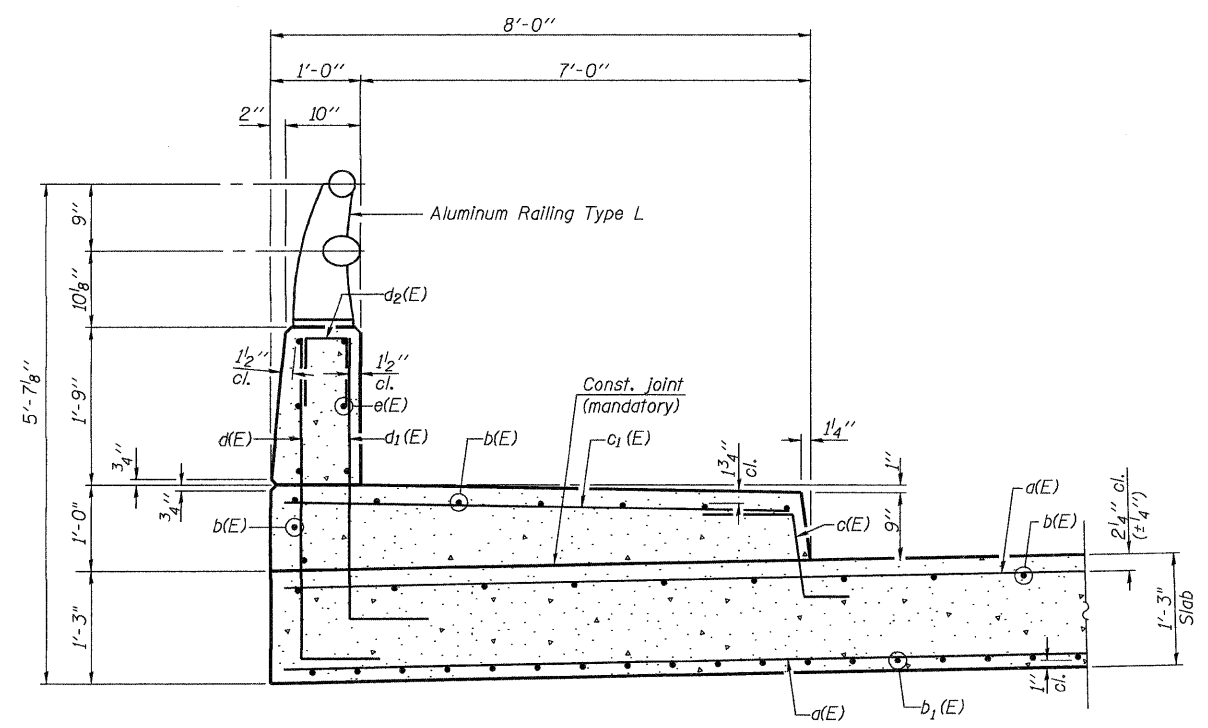


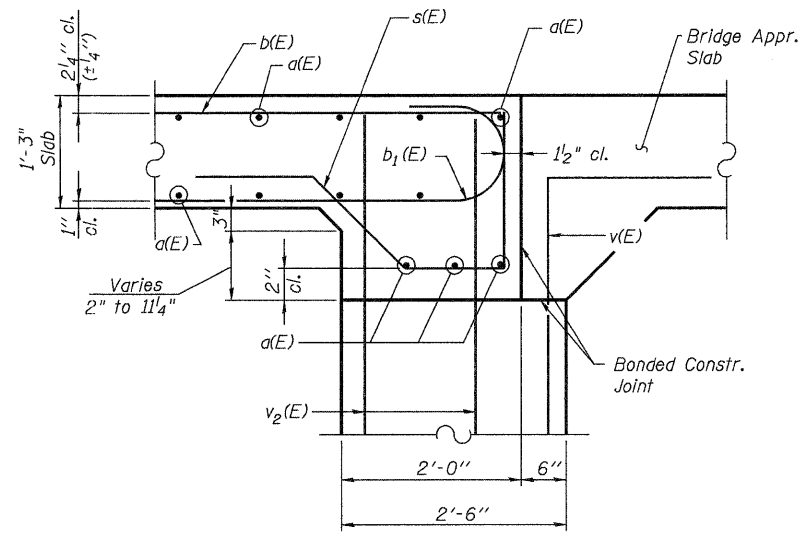
**INSIDE ELEVATION OF PARAPET**  
**MINIMUM BAR LAP**  
 (Parapet)  
 #4 bar = 2'-0"  
 #8 bar = 5'-2"



**PARAPET JOINT DETAILS**



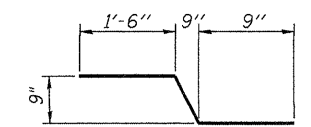
**SECTION THRU SIDEWALK**



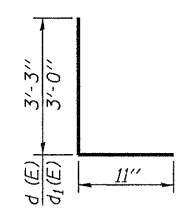
**SECTION A-A**

**SUPERSTRUCTURE  
 BILL OF MATERIAL**

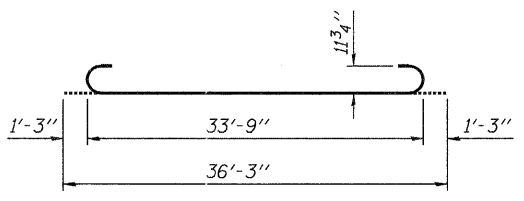
Bar	No.	Size	Length	Shape
a(E)	210	#5	41'-10"	—
b(E)	72	#5	33'-9"	—
b1(E)	200	#9	36'-3"	⌋
c(E)	70	#5	3'-4"	~
c1(E)	70	#5	7'-6"	—
d(E)	70	#6	4'-2"	┌
d1(E)	70	#4	3'-11"	┌
d2(E)	70	#4	3'-1"	┐
e(E)	24	#4	16'-9"	—
s(E)	172	#5	5'-8"	└
Reinforcement Bars, Epoxy Coated			Pound	39,180
Concrete Superstructure			Cu. Yds.	163.9



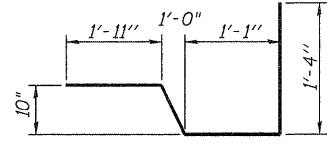
**BAR c(E)**



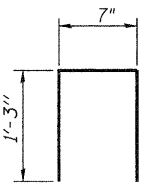
**BARS d(E) and d1(E)**



**BAR b1(E)**



**BAR s(E)**



**BAR d2(E)**

Notes:  
 See Sheet 13 of 21 for Parapet Railing Details.