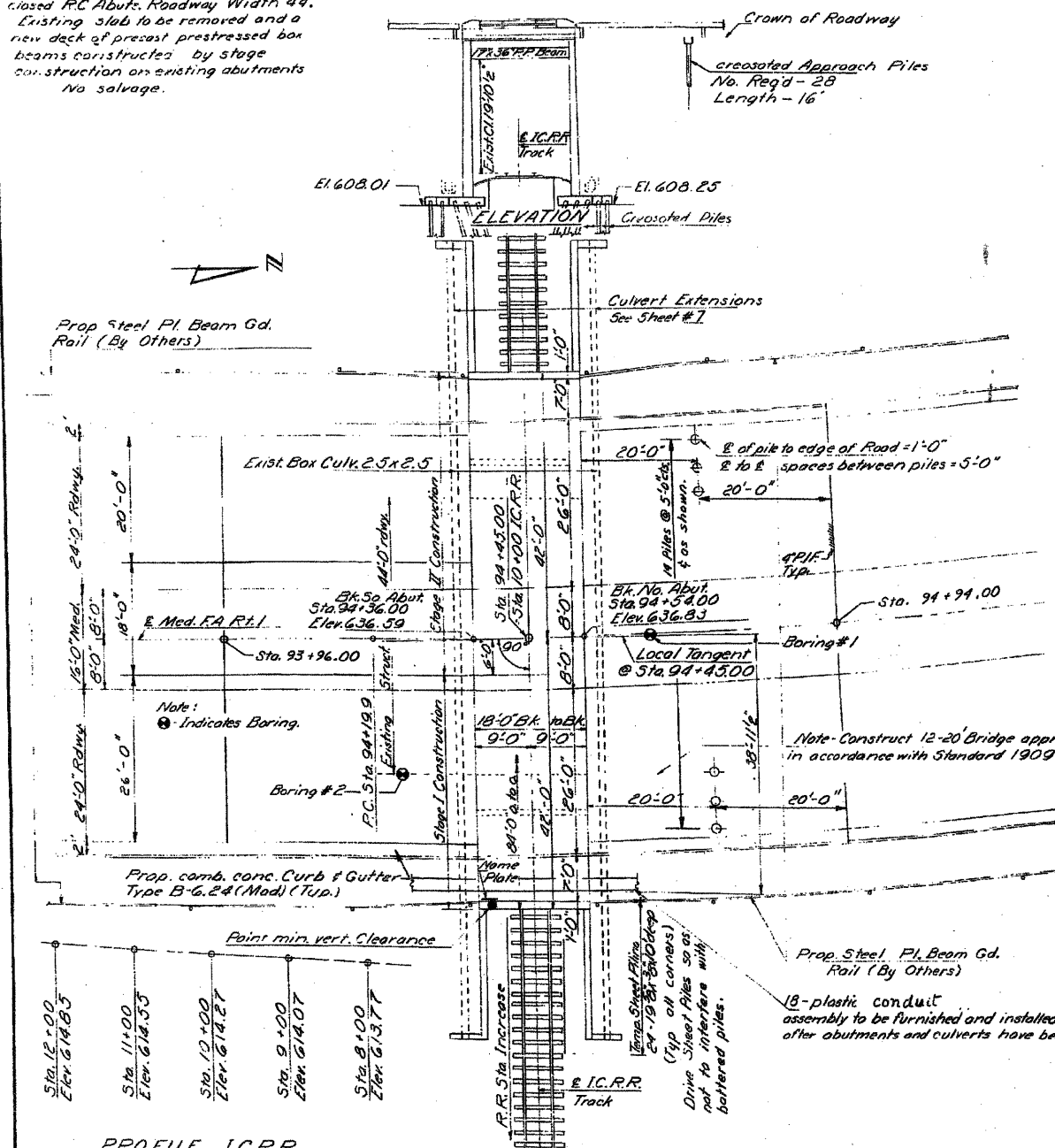


STATE OF ILLINOIS
DEPARTMENT OF PUBLIC WORKS & BUILDINGS
DIVISION OF HIGHWAYS

DATE	NO.	BY	TOTAL SHEETS	SHEET NO.
1/16/61	1	Cook	20	6
SHEET NO. 1 7 SHEETS				

3/4" Cut in S.E. Wingwall of the S.E. Corner of Wingwall (Sta. 94+36.36) El. 636.85
Existing Structure: Built -- 1923 Widened 1930. R.C. Slab on closed R.C. Abut. Roadway Width 44'. Existing Slab to be removed and a new deck of prestressed box beams constructed by stage construction on existing abutments no salvage.



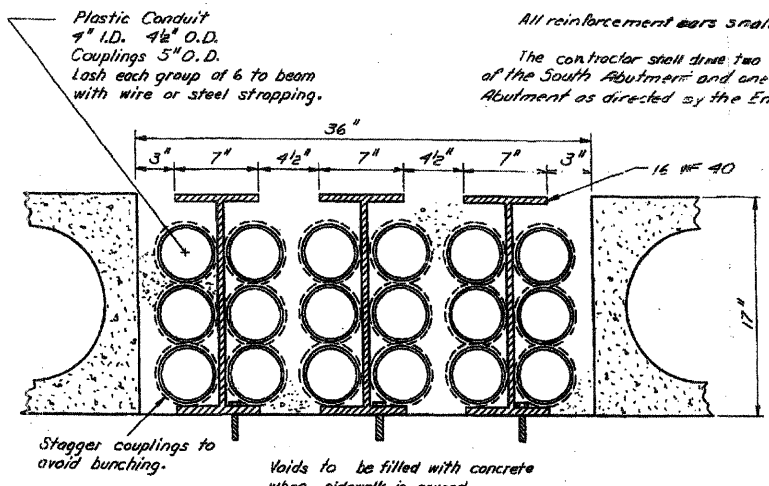
PROFILE I.C.R.R.

DESIGNED	Rao, G.K.
CHECKED	A.J. H. [Signature]
DRAWN	S.E. Lindsey
CHECKED	A.Y. [Signature]

EXAMINED *May 5, 1968*
PASSED
APPROVED

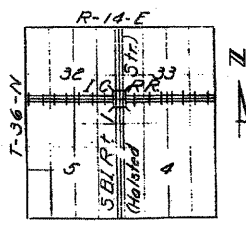
I.C.R.R.
REBUILT 196 BY
STATE OF ILLINOIS
FA RT. 1-56(161-VB-R
LOADING HS20

NAME PLATE LETTERING
See Std. 2113-1



SIDEWALK DUCT ASSEMBLY

CURVE DATA
Δ = 3°-45'-30"
D = 0°-49'-39"
R = 6934.6'
T = 225.0'
L = 449.75'
E = 3.70'



LOCATION SKETCH

GENERAL NOTES

It shall be the responsibility of the Contractor to verify all dimensions and conditions existing in the field prior to construction and ordering of materials. For backfill behind abutments see Article 502.11 of the Standard Specifications.
The back of new abutment extensions above the tops of footings shall be waterproofed in accordance with Article 503.12 of the Standard Specifications.
The portion of old concrete to be replaced to the lines designated shall be carefully removed by drilling, chipping or other methods in such a manner as to leave the rest of the structure undamaged.
During construction temporary railings or barricades shall be placed adjacent to the travelled way. The cost is incidental.
All reinforcement bars shall be lapped 24 diameters unless otherwise shown.
The contractor shall drive two test piles, one in the vicinity of west footing of the South Abutment and one in the vicinity of the east footing of the North Abutment as directed by the Engineer before ordering the remainder of piles.

Stage II A : Construct barrier median and resurface one (1) lane in each direction of a time.

TOTAL BILL OF MATERIAL

ITEM	UNIT	SUPER	SUB.	TOTAL
Class A Excavation for Structures	Cu. Yds.		1070	1070
Class X Concrete	Cu. Yds.	29.6	352.9	377.5
Aluminum Railing	Lin. Ft.	20		20
P.P.C. Deck Beams	Sq. Ft.	1404		1404
Crested Piles (up to 20' R.F.)	Lin. Ft.		3008	3008
Reinforcement Bars	Lbs.	2390	50620	53010
Name Plates	Ea.		1	1
Concrete Removal	Cu. Yds.		179	179
Coal Tar Inter Layer				
Protective Coat	Sq. Yds.	105.3		105.3
Removal of Existing Superstruct.	Ea.		1	1
Expansion Bolts	Ea.		128	128
Temp. Steel Sheet Piling	Lump Sum		1	1
Bituminous Conc. Surface Course				
Class I	Tons	8.8		8.8
Protective Coat	Sq. Yds.	79.0		79.0
Metal Shoes	Each		128	128
Test Piles (Timber)	Each		2	2

* Includes culvert quantities
** Apply to curb faces, median, sidewalks, parapet & exposed end post surfaces.

DESIGN STRESSES
FIELD UNITS PRECAST PRESTR. UNITS
f_c = 1400 psi Parapet & Curb f_c = 5000 psi
f_s = 20,000 psi Reinf. f_s = 4000 psi
f_s = 20,000 psi Struct. f_s = 248,000 psi Strands
v_c = 75 psi Ftgs f_s = 173,600 psi Strands
n = 10
Loading HS-20-44

GENERAL PLAN & ELEVATION

HALSTED STREET OVER I.C.R.R. AT
HOMEWOOD
FA RT. 1-56(161) SECTION-161-VB-R
COOK COUNTY
STA. 94+45

FOR INFORMATION ONLY