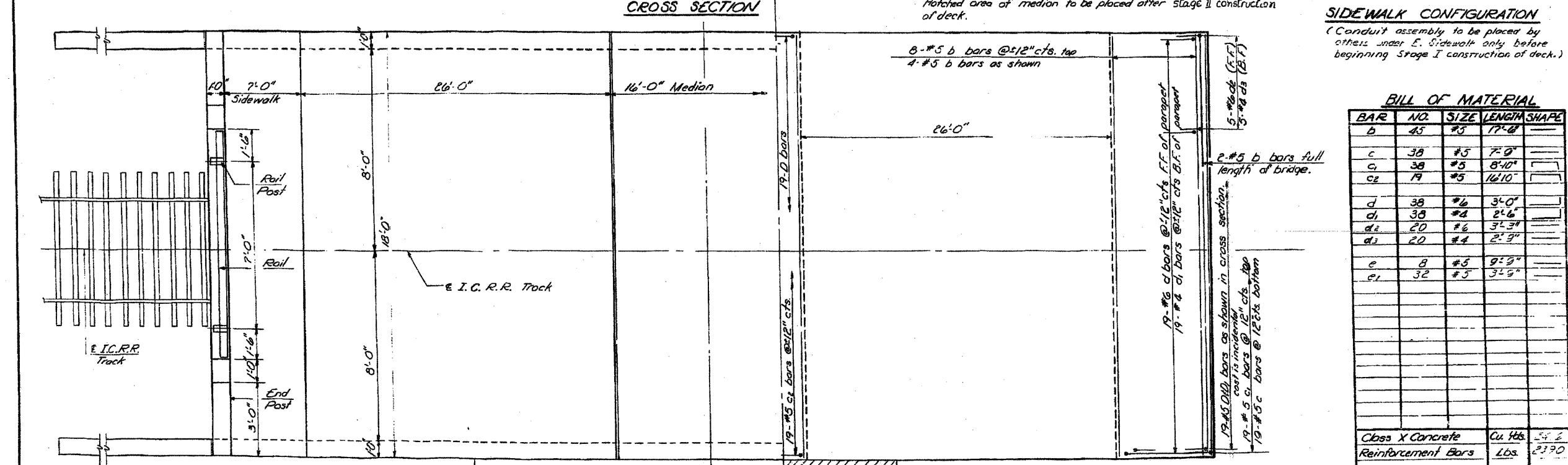
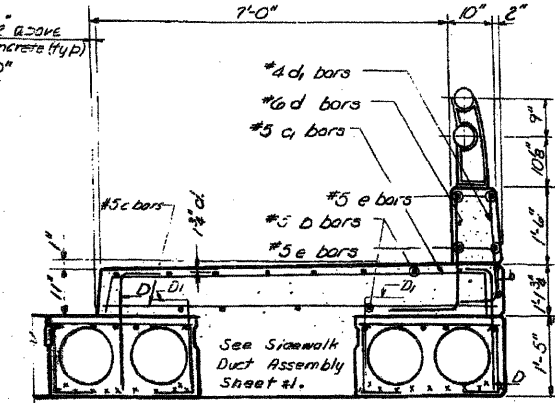
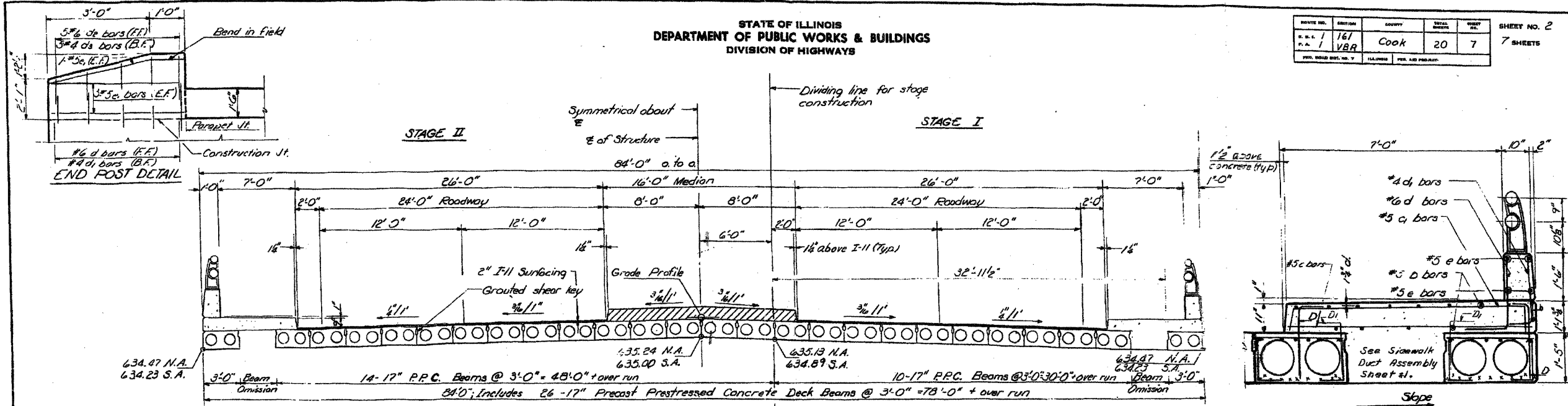


STATE OF ILLINOIS
DEPARTMENT OF PUBLIC WORKS & BUILDINGS
DIVISION OF HIGHWAYS

PROJECT NO.	SECTION	COUNTY	TOTAL SHEETS	SHEET NO.	SHEETS
161	VBR	COOK	20	7	7



BILL OF MATERIAL

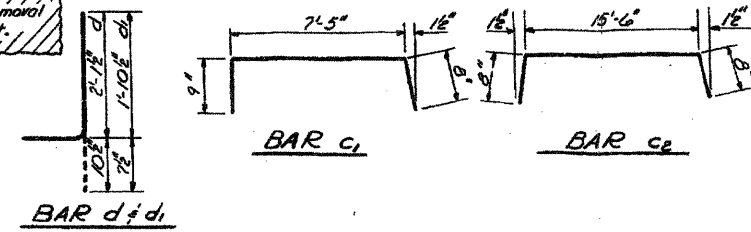
BAR NO.	SIZE	LENGTH	SHAPE
b	#5	77'-8"	
c	#5	7'-0"	
c1	#5	8'-10"	
c2	#5	16'-10"	
d	#6	3'-0"	
d1	#6	2'-6"	
d2	#6	3'-3"	
d3	#6	2'-3"	
e	#5	9'-9"	
e1	#5	3'-9"	

Class X Concrete Cu Yds. 54.2
Reinforcement Bars Lbs. 2390

DESIGNED RAO G.K.
CHECKED A.I. Kharyat
DRAWN J. Schneller S.E.L.
CHECKED A.I. Kharyat

EXAMINED *May 15 1968*
PASSED
APPROVED

Bridge Approach Pav't
Typ.
For details and placement of D bars
in Median see sh. #5.



The lengths and quantities of all reinforcement, and Class X Concrete in parapets and end posts are included in above quantities, see sh. #6.
SUPERSTRUCTURE
F.A. RT. 1 (S.B.T.) SEC. 161-VB-R
COOK COUNTY
STA. 94+45