

STATE OF ILLINOIS
DEPARTMENT OF TRANSPORTATION
DIVISION OF HIGHWAYS

**PROPOSED
HIGHWAY PLANS**

FAU 1285 / PALATINE ROAD OVER SALT CREEK
CULVERT REPAIRS
SECTION: 2011-033-T
PROJECT NO. NHM-1285(004)
COOK COUNTY
C-91-524-11

F.A.U. RTE.	SECTION	COUNTY	TOTAL SHEETS	SHEET NO.
1285	2011-033-T	COOK	18	1
FED ROAD DIST NO. 1 ILLINOIS		CONTRACT NO. 60P39		

FOR INDEX OF SHEETS, SEE SHEET NO. 2

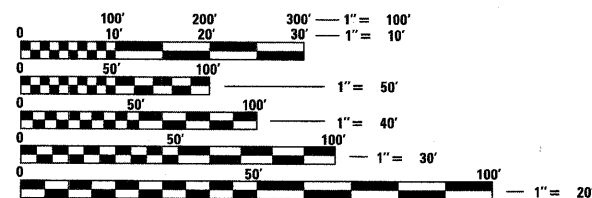
TRAFFIC DATA:

PALATINE ROAD
EXISTING 2006 ADT: 14,600
POSTED SPEED LIMIT: 35 MPH

DESIGN DESIGNATION:

MINOR ARTERIAL

PROJECT IS LOCATED IN THE VILLAGE
OF PALATINE IN COOK COUNTY



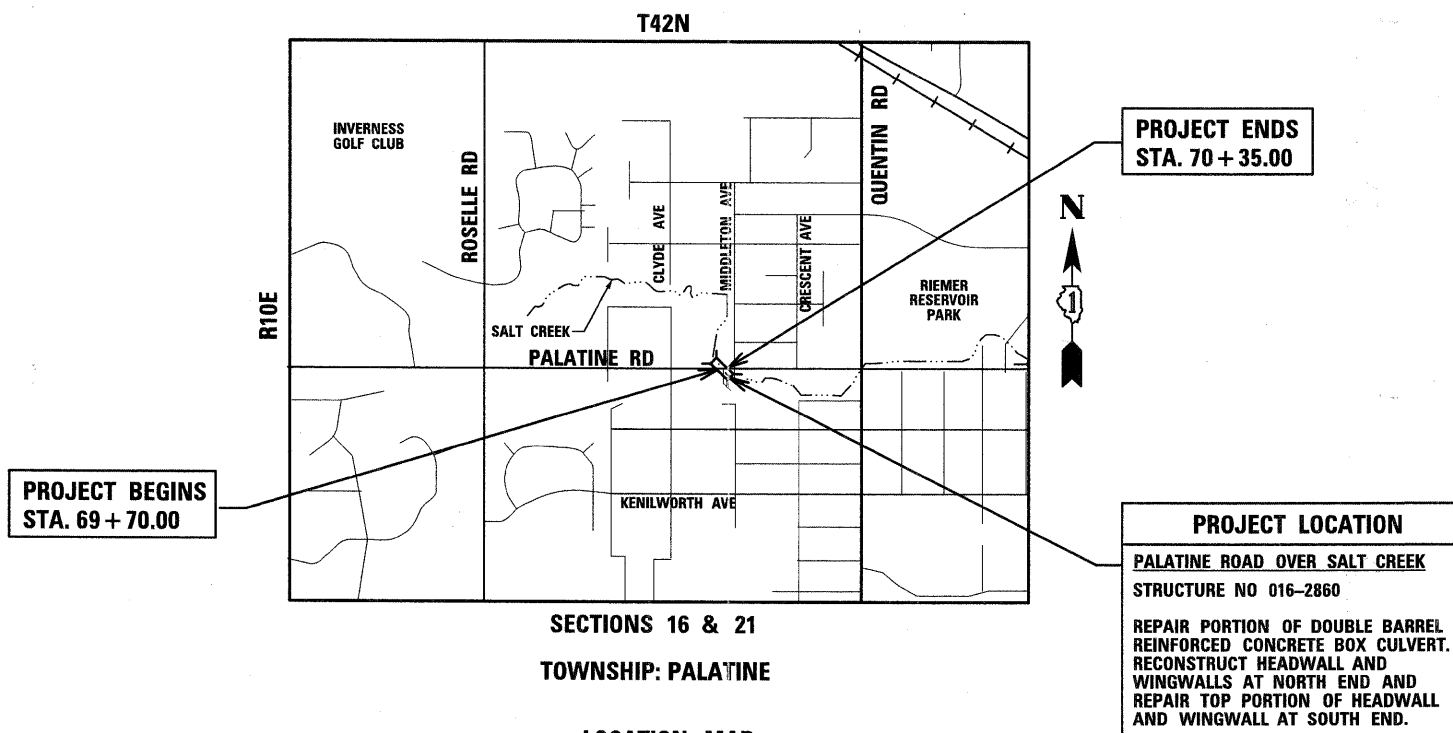
FULL SIZE PLANS HAVE BEEN PREPARED USING STANDARD ENGINEERING SCALES. REDUCED SIZED PLANS WILL NOT CONFORM TO STANDARD SCALES. IN MAKING MEASUREMENTS ON REDUCED PLANS, THE ABOVE SCALES MAY BE USED.

J.U.L.I.E.
JOINT UTILITY LOCATION INFORMATION FOR EXCAVATION
1-800-892-0123 OR 811

PROJECT MANAGER ISSAM RAYYAN, PE (847) 705-4550
PROJECT ENGINEER ROBERT T. BORO, PE (847) 705-4178
CONTRACT NO. 60P39



LOCATION OF SECTION INDICATED THUS: - [black rectangle] -



GROSS AND NET LENGTH OF PROJECT = 65.00 FEET = 0.012 MILES

STATE OF ILLINOIS
DEPARTMENT OF TRANSPORTATION
DIVISION OF HIGHWAYS

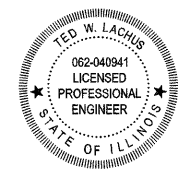
SUBMITTED October 11, 2011
John M. O'Keefe
DEPUTY DIRECTOR OF HIGHWAYS, REGION ENGINEER

February 3, 2012
John D. Baranowski, P.E.
acting ENGINEER OF DESIGN AND ENVIRONMENT

February 3, 2012
William R. Frey
acting DIRECTOR OF HIGHWAYS, CHIEF ENGINEER

PRINTED BY THE AUTHORITY
OF THE STATE OF ILLINOIS

Primera
100 S. WACKER DRIVE SUITE 700 CHICAGO IL 60606.
P:312-606-0910 F:312-606-0415



Ted W. Lachus
TED W. LACHUS, P.E.
EXPIRES 11-30-2011
DATE 10-7-2011