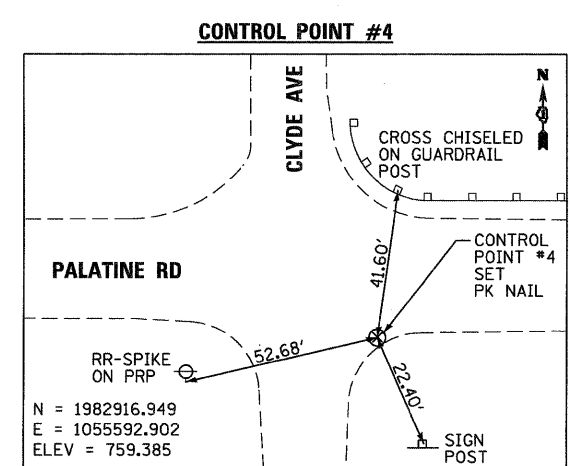
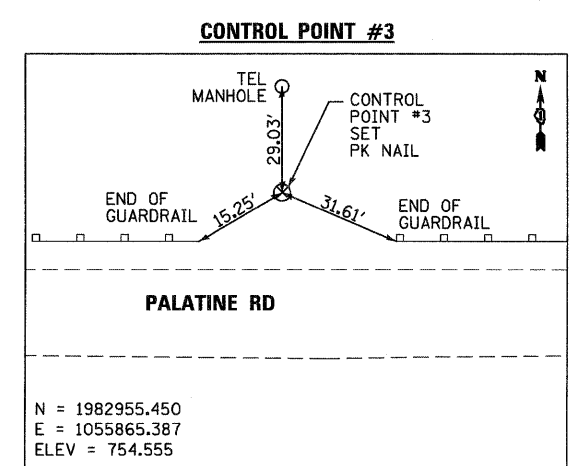
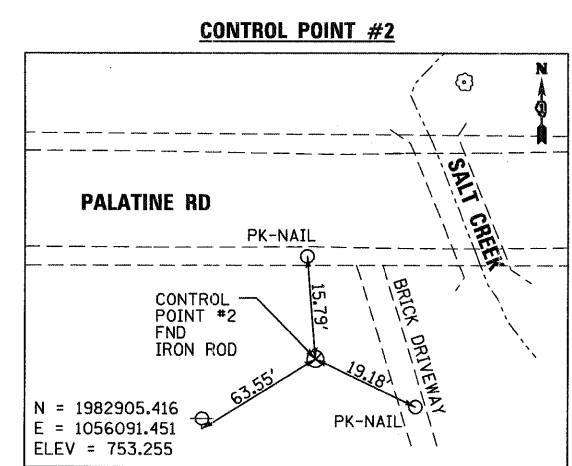
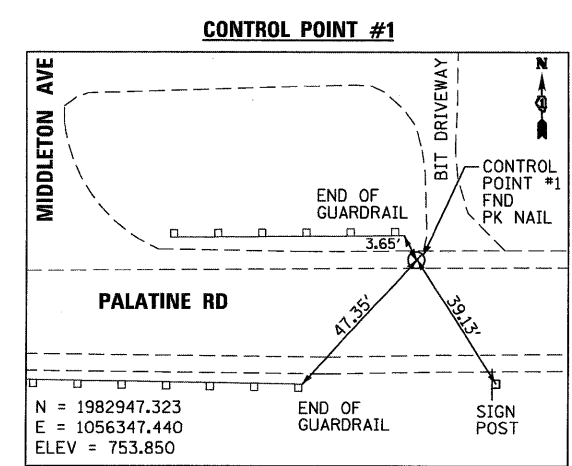


BENCHMARK:
 BM #1
 CROSS CUT ON NW BOLT OF HYDRANT
 AT NW CORNER OF PALATINE RD. AND MIDDLETON AVE.
 ELEV = 750.61

BM #2
 SET RR-SPIKE ON N SIDE OF POWER POLE
 AT ±35 FT SOUTH OF PALATINE RD. CL AND ±100 FT
 WEST OF SALT CREEK CL
 ELEV = 754.50

ALIGNMENT COORDINATES - PALATINE ROAD

STATION	NORTHING	EASTING
65+00	1,982,936.542	1,055,634.252
69+70	1,982,934.060	1,056,104.245
70+00	1,982,933.901	1,056,134.245
70+35	1,982,933.716	1,056,169.245
75+00	1,982,931.260	1,056,634.238



FILE NAME =
 ...D160P39-ah-tr-etb.dgn



DESIGNED - ADW	REVISED -
DRAWN - GEW	REVISED -
CHECKED - RJD	REVISED -
DATE - 10/7/2011	REVISED -

**STATE OF ILLINOIS
 DEPARTMENT OF TRANSPORTATION**

**PALATINE ROAD OVER SALT CREEK
 ALIGNMENT, TIES & BENCHMARKS**

SCALE: 1"=50' SHEET NO. 1 OF 1 SHEETS STA. TO STA.

F.A.U. RTE. 1285	SECTION 2011-033-T	COUNTY COOK	TOTAL SHEETS 18	SHEET NO. 5
CONTRACT NO. 60P39				
[ILLINOIS] FED. AID PROJECT				