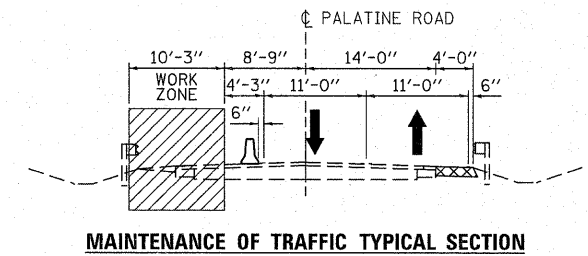


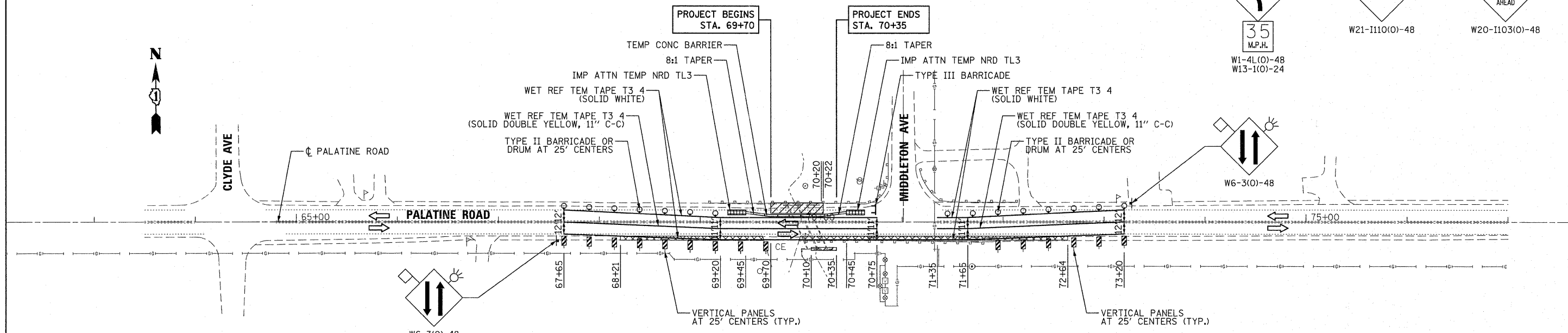
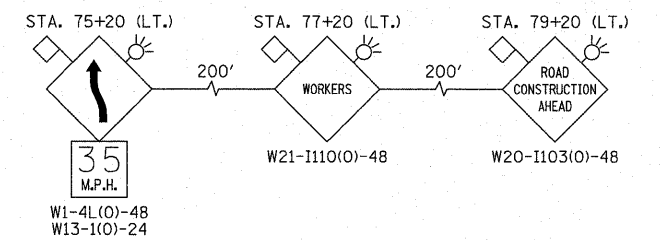
**MAINTENANCE OF TRAFFIC GENERAL NOTES**

1. THE MAINTENANCE OF TRAFFIC CONTROL (MOT) PLANS SHALL SERVE AS A GUIDE FOR SAFE DIVERSION OF TRAFFIC DURING EXECUTION OF THIS CONTRACT. HOWEVER, THE CONTRACTOR MAY MODIFY THE MOT PLANS TO MEET CONSTRUCTION NEEDS BUT NOT AT THE EXPENSE OF PUBLIC SAFETY OR CONVENIENCE. ANY CHANGES TO THE MOT PLANS SHALL BE SUBMITTED TO THE ENGINEER FOR APPROVAL.
2. THE ENGINEER SHALL BE INFORMED 48 HOURS IN ADVANCE OF ANY CHANGE TO THE MOT PLANS.
3. LONGITUDINAL DIMENSIONS MAY BE ADJUSTED SLIGHTLY TO FIT FIELD CONDITIONS.
4. ALL VEHICLES, EQUIPMENT, WORKERS, AND THEIR ACTIVITIES ARE RESTRICTED AT ALL TIMES TO ONE SIDE OF THE PAVEMENT UNLESS OTHERWISE AUTHORIZED BY THE ENGINEER.
5. ALL EXISTING PAVEMENT MARKINGS IN CONFLICT WITH THE MAINTENANCE OF TRAFFIC STRIPING SHALL BE REMOVED. THIS WORK WILL BE PAID FOR AT THE CONTRACT UNIT PRICE PER SQUARE FOOT, "PAVEMENT MARKING REMOVAL".
6. THE CONTRACTOR SHALL REMOVE ALL TEMPORARY PAVEMENT MARKING TAPE WHICH CONFLICTS WITH THE NEXT STAGE OR FINAL STRIPING. REMOVAL OF TEMPORARY PAVEMENT MARKING TAPE WILL BE PAID FOR AT THE CONTRACT UNIT PRICE PER SQUARE FOOT, "WORK ZONE PAVEMENT MARKING REMOVAL".
7. ALL TRAFFIC CONTROL DEVICES USED FOR THE MAINTENANCE OF TRAFFIC, AS DETAILED ON THE PLANS, OR HIGHWAY STANDARD SHALL BE REFLECTORIZED PRIOR TO INSTALLATION AND CLEANED AS SPECIFIED IN THE MAINTENANCE OF TRAFFIC SPECIAL PROVISION OR AS DIRECTED BY THE ENGINEER.
8. ALL DRUMS, VERTICAL PANELS, AND BARRICADES ADJACENT TO THE EDGE OF TRAVELED WAY SHALL BE EQUIPPED WITH STEADY-BURNING MONODIRECTIONAL LIGHTS.

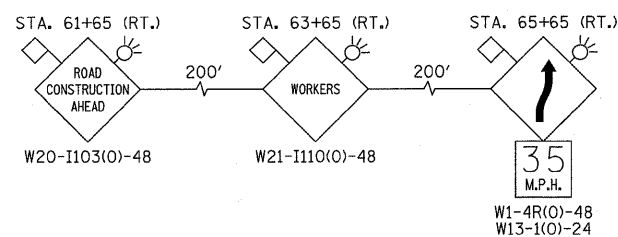
9. ALL EXISTING SIGNS WITHIN THE LIMITS OF MAINTENANCE OF TRAFFIC WHICH ARE OBTURED BY OR OTHERWISE INTERFERED WITH BY THE CONSTRUCTION OPERATIONS AND MAINTENANCE OF TRAFFIC, SHALL BE COVERED OR REMOVED BY THE CONTRACTOR UNLESS SPECIFIED IN THE PLANS OR WHEN DIRECTED BY THE ENGINEER. THIS WORK SHALL BE IN ACCORDANCE WITH ARTICLE 107.25 OF THE IDOT STANDARD SPECIFICATIONS.
10. THE CONTRACTOR SHALL PLACE A CHANGEABLE MESSAGE SIGN AT EACH END OF THE PROJECT AND/OR AS DIRECTED BY THE ENGINEER TO INFORM MOTORISTS OF UPCOMING CONSTRUCTION ACTIVITIES. THE MESSAGE SIGNS WITH THE APPROPRIATE INFORMATION SHALL BE IN PLACE TWO WEEKS BEFORE START OF CONSTRUCTION ACTIVITY. THIS WORK IS TO BE PAID FOR AT THE CONTRACT UNIT PRICE PER CALENDAR MONTH, "CHANGEABLE MESSAGE SIGN".
11. ALL TEMPORARY INFORMATION SIGNS SHALL BE PAID FOR SEPARATELY AT THE CONTRACT UNIT PRICE PER SQUARE FOOT FOR "TEMPORARY INFORMATION SIGNING".
12. HIGH-INTENSITY FLASHING LIGHTS SHALL BE USED ON EACH APPROACH IN ADVANCE OF THE WORK ZONE DURING HOURS OF DARKNESS AND INSTALLED ABOVE THE FIRST TWO SIGNS IN EACH SERIES.
13. ALL HIGHWAY TRAFFIC CONTROL STANDARDS WILL NOT BE PAID FOR SEPARATELY, BUT WILL BE INCLUDED IN THE LUMP SUM PRICE FOR "TRAFFIC CONTROL AND PROTECTION, (SPECIAL)".
14. IT IS THE CONTRACTOR'S RESPONSIBILITY TO COORDINATE CONSTRUCTION TO MAINTAIN SAFE TRAFFIC FLOW THROUGH THE WORK ZONE.
15. TRAFFIC CONTROL DEVICES SHALL NOT IMPAIR THE DESIGNATED PEDESTRIAN MOVEMENT AROUND THE CONSTRUCTION AREA.
16. PLACE TEMPORARY PAVEMENT, DRIVEWAY PAVEMENT, AND HMA SURFACE COURSE ON EB PALATINE ROAD (SOUTH OF CENTERLINE) PRIOR TO SHIFTING TRAFFIC.
17. TEMPORARY PAVEMENT, DRIVEWAY PAVEMENT, AND HMA SURFACE COURSE ON EB PALATINE ROAD (SOUTH OF CENTERLINE) SHALL BE LEFT IN-PLACE AFTER CONSTRUCTION ACTIVITIES HAVE CONCLUDED AND AS DIRECTED BY THE ENGINEER.



**ADVANCE SIGNING DETAIL**



**ADVANCE SIGNING DETAIL**



**LEGEND:**

- WORK AREA
- TEMPORARY PAVEMENT
- TEMPORARY CONCRETE BARRIER
- SIGN
- DRUM WITH STEADY BURNING BIDIRECTIONAL LIGHT
- TYPE III BARRICADE
- VERTICAL PANEL
- IMPACT ATTENUATOR, TEMPORARY (NON-REDIRECTIVE, NARROW) TEST LEVEL 3
- DIRECTION OF TRAFFIC

FILE NAME = ...\\D160P39-sh-t-staging.dgn



DESIGNED - ADW  
 DRAWN - GEW  
 CHECKED - RJD  
 DATE - 12/12/2011

REVISED -  
 REVISED -  
 REVISED -  
 REVISED -

**STATE OF ILLINOIS  
 DEPARTMENT OF TRANSPORTATION**

**PALATINE ROAD OVER SALT CREEK  
 MAINTENANCE OF TRAFFIC PLAN**

SCALE: 1"=50' SHEET NO. 1 OF 1 SHEETS STA. 67+65 TO STA. 73+20

F.A.U. RTE.	SECTION	COUNTY	TOTAL SHEETS	SHEET NO.
1285	2011-033-T	COOK	18	7
CONTRACT NO. 60P39				
ILLINOIS FED. AID PROJECT				