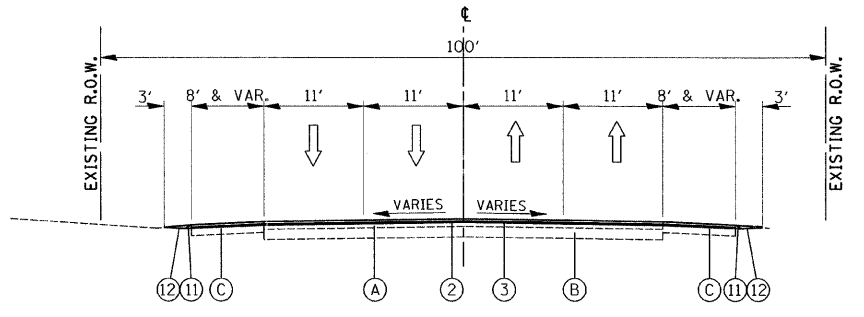
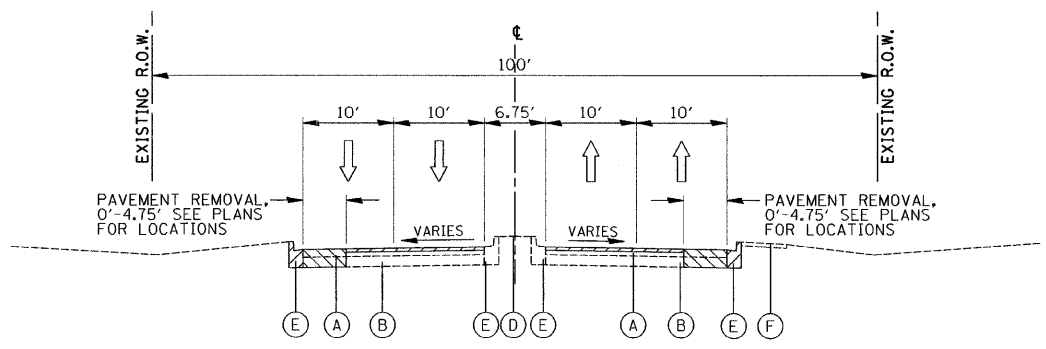


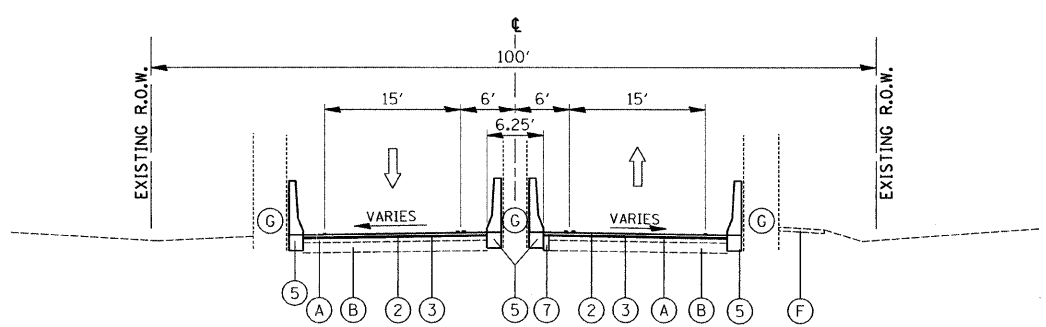
EXISTING TYPICAL SECTION
STA. 51+71 TO STA. 57+22



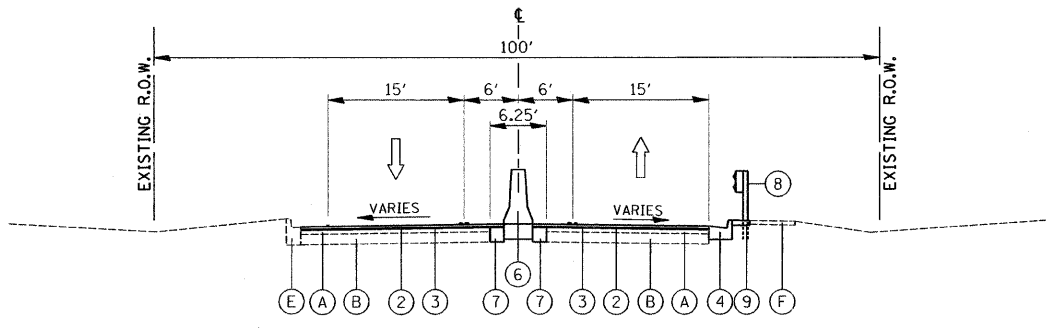
PROPOSED TYPICAL SECTION
STA. 51+71 TO STA. 57+22



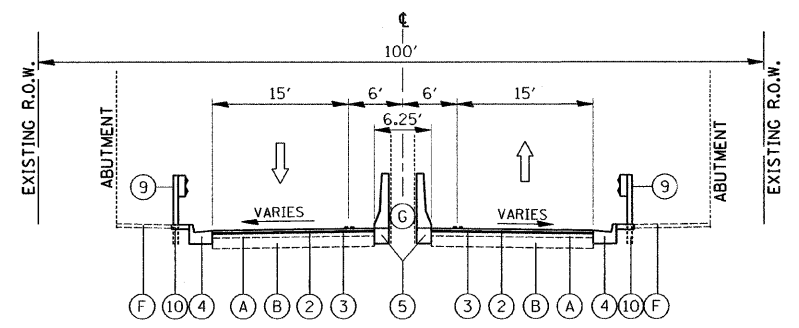
EXISTING TYPICAL SECTION
STA. 60+43 TO STA. 67+41



PROPOSED TYPICAL SECTION
STA. 60+67 TO STA. 61+42

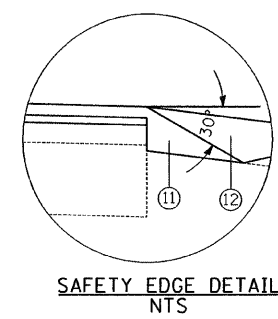


PROPOSED TYPICAL SECTION
STA. 62+54 TO STA. 65+00



PROPOSED TYPICAL SECTION
STA. 65+00 TO STA. 66+33

NOTES:
CONTINUE CURB & GUTTER AND PAVEMENT REMOVAL AND NEW CURB & GUTTER AND STEEL PLATE BEAM GUARDRAIL TO STA. 68+18 RT. AND 69+01 LT.



EXISTING CONDITIONS LEGEND

- (A) HMA SURFACE COURSE, 6" & VAR
- (B) PCC BASE COURSE, 8"
- (C) HMA SHOULDER, 8"
- (D) PCC CURB & GUTTER, B-6.12
- (E) CONCRETE OR EARTH MEDIAN
- (F) PCC SIDEWALK
- (G) EXISTING BRIDGE COLUMN

PROPOSED IMPROVEMENTS

- (1) HOT MIX ASPHALT SURFACE REMOVAL 2 1/2"
 - (2) POLYMERIZED HOT MIX ASPHALT SURFACE COURSE, MIX F, N90 1 3/4"
 - (3) POLYMERIZED LEVELING BINDER (MACHINE METHOD), IL 4.75, N50 3/4"
 - (4) COMBINATION CONCRETE CURB & GUTTER, TYPE B-6.24
 - (5) CONCRETE BARRIER SINGLE FACE, 42" HEIGHT AND CONCRETE BARRIER BASE
 - (6) CONCRETE BARRIER DOUBLE FACE, 42" HEIGHT AND CONCRETE BARRIER BASE
 - (7) PCC BASE COURSE WIDENING, 12"
 - (8) HMA BASE COURSE WIDENING, 12"
 - (9) STEEL PLATE BEAM GUARDRAIL
 - (10) HMA SHOULDER, 6"
 - (11) SAFETY EDGE
 - (12) AGGREGATE WEDGE SHOULDER, TYPE B GRADING AND SHAPING SHOULDER
- PAVEMENT MARKING

THE CONTRACTOR SHALL MILL FIRST BEFORE PATCHING

HOT-MIX ASPHALT MIXTURE REQUIREMENTS	
MIXTURE TYPE	AIR VOIDS @ Ndes
ROADWAY, RESURFACING AND WIDENING	
POLYMERIZED HOT-MIX ASPHALT SURFACE COURSE, MIX "F", N90 (IL 9.5mm) 1 3/4"	4% @ 70 GYR
POLYMERIZED LEVELING BINDER (MACHINE METHOD), IL 4.75, N50, 3/4"	3.5% @ 50 GYR
HOT-MIX ASPHALT BASE COURSE WIDENING, 12" (IL-19.0, N90) IN 3 LIFTS	4% @ 90 GYR
SHOULDER	
HOT-MIX ASPHALT SHOULDER (HMA BINDER IL 19 mm) 6"	4% @ 70 GYR
CLASS D PATCHES, 12"	
CLASS D PATCHES (HMA BINDER IL 19mm) 12"	4% @ 70 GYR
TEMPORARY PAVEMENT	
HOT-MIX ASPHALT SURFACE COURSE, MIX "D", N50, (IL-9.5mm), 2"	4% @ 50 GYR
TEMP PAVEMENT (HMA BINDER IL-19 mm), 6"	4% @ 50 GYR
DRIVEWAY PAVEMENT	
HOT-MIX ASPHALT SURFACE COURSE, MIX "D", N50 (IL 9.5 mm), 2"	4% @ 50 GYR
HOT-MIX ASPHALT BASE COURSE (HMA BINDER IL-19 mm), 8"	4% @ 50 GYR

THE UNIT WEIGHT USED TO CALCULATE ALL HOT-MIX ASPHALT SURFACE MIXTURE A IS 112 LBS/SQ YD/IN.

THE "AC TYPE" FOR POLYMERIZED HMA MIXES SHALL BE "SBS/SBR PG 76-22" AND FOR NON-POLYMERIZED HMA THE "AC TYPE" SHALL BE "PG 64-22" UNLESS MODIFIED BY DISTRICT ONE SPECIAL PROVISIONS.

FOR "PERCENT OF RAP" SEE DISTRICT ONE SPECIAL PROVISIONS.