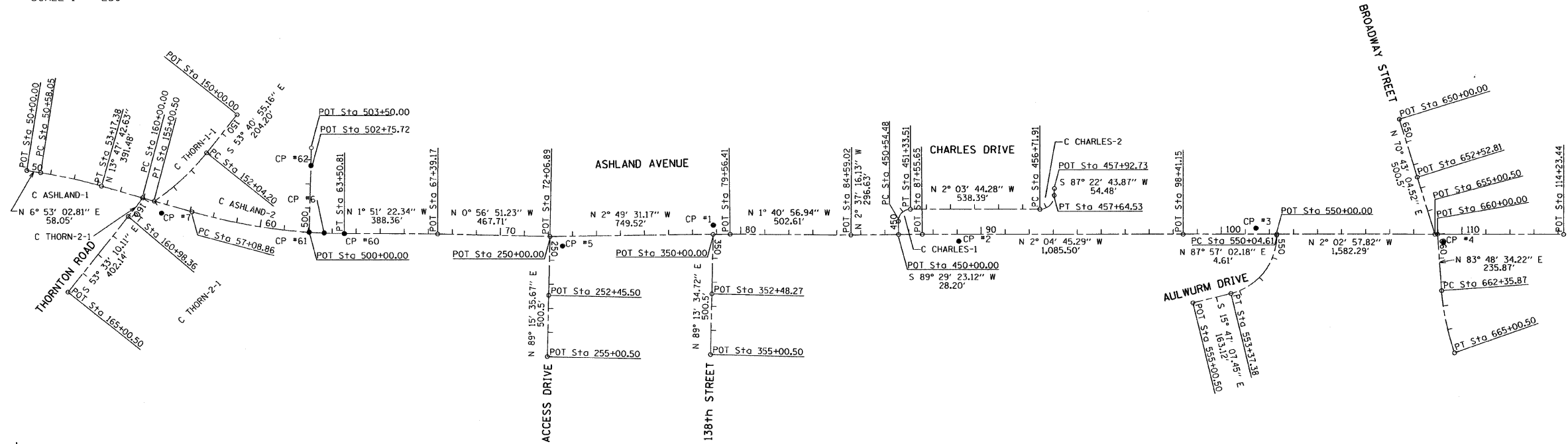


EXIST. CURVE ASHLAND-1 PI STA. = 51+87.87 Δ = 6° 54' 40" (RT) D = 2° 39' 54" R = 2,150.00' T = 129.82' L = 259.33' E = 3.92' e = T.R. = S.E. RUN = P.C. STA. = 50+58.05 P.T. STA. = 53+17.38	EXIST. CURVE ASHLAND-2 PI STA. = 30+31.85 Δ = 15° 39' 05" (LT) D = 2° 26' 17" R = 2,350.00' T = 12322.98' L = 641.95' E = 22.09' e = T.R. = S.E. RUN = P.C. STA. = 57+08.86 P.T. STA. = 63+50.81	EXIST. CURVE THORN-1-1 PI STA. = 153+53.52 Δ = 17° 32' 20" (RT) D = 5° 55' 10" R = 967.94' T = 149.32' L = 296.30' E = 11.45' e = T.R. = S.E. RUN = P.C. STA. = 152+04.20 P.T. STA. = 155+00.50	EXIST. CURVE THORN-2-1 PI STA. = 160+49.21 Δ = 4° 49' 19" (RT) D = 4° 54' 08" R = 1,168.74' T = 49.21' L = 98.36' E = 1.04' e = T.R. = S.E. RUN = P.C. STA. = 160+00.00 P.T. STA. = 160+98.36	EXIST. CURVE CHARLES-1 PI STA. = 451+04.97 Δ = 90° 33' 32" (RT) D = 114° 35' 30" R = 50.00' T = 50.49' L = 79.03' E = 21.06' e = T.R. = S.E. RUN = P.C. STA. = 450+54.48 P.T. STA. = 451+33.51	EXIST. CURVE CHARLES-2 PI STA. = 457+30.30 Δ = 88° 26' 53" (LT) D = 95° 29' 35" R = 60.00' T = 58.40' L = 92.62' E = 23.73' e = T.R. = S.E. RUN = P.C. STA. = 456+71.91 P.T. STA. = 457+64.53	EXIST. CURVE BROAD-2-1 PI STA. = 663+68.96 Δ = 15° 09' 45" (LT) D = 5° 43' 46" R = 1,000.00' T = 133.09' L = 264.63' E = 8.82' e = T.R. = S.E. RUN = P.C. STA. = 550+04.61 P.T. STA. = 553+37.38	EXIST. CURVE AULWURM-1 PI STA. = Δ = 76° 15' 50" (RT) D = 22° 55' 06" R = 250.00' T = 196.25' L = 332.76' E = 67.83' e = T.R. = S.E. RUN = P.C. STA. = 550+04.61 P.T. STA. = 553+37.38
--	--	---	---	--	---	--	--



SCALE 1" = 250'



ALIGNMENT COORDINATES - ASHLAND AVENUE

	STATION	NORTHING	EASTING
POB	50+00.00	1,810,882.60	1,168,071.38
PC	50+58.05	1,810,940.23	1,168,078.33
PI	51+87.87	1,811,069.12	1,168,093.89
PT	53+17.38	1,811,195.20	1,168,124.85
PC	57+08.86	1,811,575.39	1,168,218.20
PI	60+31.85	1,811,889.05	1,168,295.22
PT	63+50.81	1,812,211.87	1,168,284.75
POT	67+39.17	1,812,600.03	1,168,272.18
POT	72+06.89	1,813,067.68	1,168,264.44
POT	79+56.41	1,813,816.29	1,168,227.50
POT	84+59.02	1,814,318.68	1,168,212.74
POT	87+55.65	1,814,615.00	1,168,199.17
POT	98+41.15	1,815,699.79	1,168,159.79
POT	114+23.44	1,817,281.06	1,168,103.21

ALIGNMENT COORDINATES - 138th STREET

	STATION	NORTHING	EASTING
POB	350+00.00	1,813,745.58	1,168,230.99
POT	352+48.27	1,813,748.93	1,168,479.23
POT	355+00.50	1,813,752.34	1,168,731.44

ALIGNMENT COORDINATES - ACCESS DRIVE

	STATION	NORTHING	EASTING
POB	50+00.00	1,813,067.68	1,168,264.44
POT	50+58.05	1,813,070.85	1,168,509.92
POT	51+87.87	1,813,074.14	1,168,764.91

ALIGNMENT COORDINATES - AULWURM DRIVE

	STATION	NORTHING	EASTING
POB	550+00.00	1,816,088.87	1,168,145.87
PC	550+04.61	1,816,089.03	1,168,150.48
PI	552+00.86	1,816,096.05	1,168,346.60
PT	553+37.38	1,815,907.20	1,168,399.99
POT	555+00.50	1,815,750.23	1,168,444.36

ALIGNMENT COORDINATES - BROADWAY STREET-1

	STATION	NORTHING	EASTING
POB	650+00.00	1,816,580.42	1,167,649.93
POT	652+52.81	1,816,663.90	1,167,888.50
POT	655+00.50	1,816,745.69	1,168,122.36

ALIGNMENT COORDINATES - BROADWAY STREET-2

	STATION	N	EASTING
POB	550+00.00	1,816,756.73	1,168,121.97
PC	550+04.61	1,816,782.16	1,168,356.46
PI	552+00.86	1,816,796.51	1,168,488.78
PT	553+37.38	1,816,844.97	1,168,612.74

ALIGNMENT COORDINATES - CHARLES DRIVE

	STATION	NORTHING	EASTING
POB	450+00.00	1,814,516.28	1,168,203.69
PC	450+54.48	1,814,513.79	1,168,149.27
PI	451+04.97	1,814,511.48	1,168,098.83
PT	451+33.51	1,814,561.94	1,168,097.01
PC	456+71.91	1,815,099.98	1,168,077.64
PI	457+30.30	1,815,158.34	1,168,075.53
PT	457+64.53	1,815,157.82	1,168,017.14
POT	457+92.73	1,815,157.57	1,167,988.94

ALIGNMENT COORDINATES - THORNTON ROAD-1

	STATION	NORTHING	EASTING
POB	150+00.00	1,811,748.14	1,167,807.39
PC	152+04.20	1,811,627.20	1,167,971.93
PI	153+53.52	1,811,538.23	1,168,091.84
PT	155+00.50	1,811,417.26	1,168,179.38

ALIGNMENT COORDINATES - THORNTON ROAD-2

	STATION	NORTHING	EASTING
PC	160+00.00	1,811,368.26	1,168,167.34
PI	160+49.22	1,811,341.25	1,168,208.48
PT	160+98.36	1,811,310.88	1,168,247.20
POT	165+00.50	1,811,071.98	1,168,570.68

CONTROL POINT	NORTHING	EASTING	ELEVATION	DESCRIPTION
1	1,813,745.21	1,168,193.42		FOUND REBAR ON WEST SIDE OF ASHLAND AVE. AND CONCRETE DRIVEWAY TO RIVERDALE INDUSTRIES
2	1,814,767.92	1,168,222.18	595.52	FOUND "+" AT NE CORNER OF ASHLAND AVE. AND CONCRETE DRIVEWAY TO RIVERDALE INDUSTRIES
3	1,816,001.67	1,168,124.75		FOUND REBAR ON THE WEST SIDE OF ASHLAND AND AULWURM DR.
4	1,816,782.41	1,168,154.82		FOUND REBAR AT THE NE CORNER OF ASHLAND AVE. AND BROADWAY ST.
5	1,813,121.29	1,168,302.56		FOUND REBAR AT THE NE CORNER OF ASHLAND AVE. AND ACCESS RD TO TRI-STATE DISPOSAL INC.
6	1,812,127.86	1,168,285.34		FOUND REBAR IN THE CENTER MEDIAN BETWEEN 1ST 2 RR BRIDGES. NORTH OF THORNTON RD.
7	1,811,449.00	1,168,227.98		FOUND REBAR AT THE NE CORNER OF ASHLAND AVE. AND THORNTON RD.
60	1,812,211.84	1,168,284.79		FOUND REBAR IN THE CENTER MEDIAN OF ASHLAND AVE. NORTH OF CL 1ST RR BRIDGE AND NORTH OF THORNTON RD.
61	1,812,065.56	1,168,284.64		SET REBAR IN CENTER MEDIAN 146.28' SOUTH OF CP #60
62	1,812,062.72	1,168,008.94		FOUND REBAR UNDER I-57 BRIDGE 275.72 WEST OF CP #61

NCS MON
BRASS DISK IN CONCRETE
ME 1834
ELEVATION = 605.82'