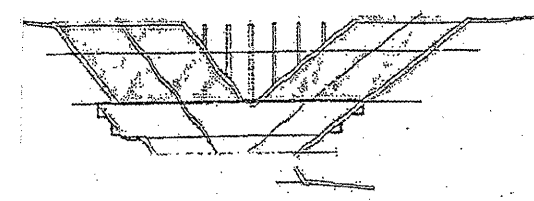
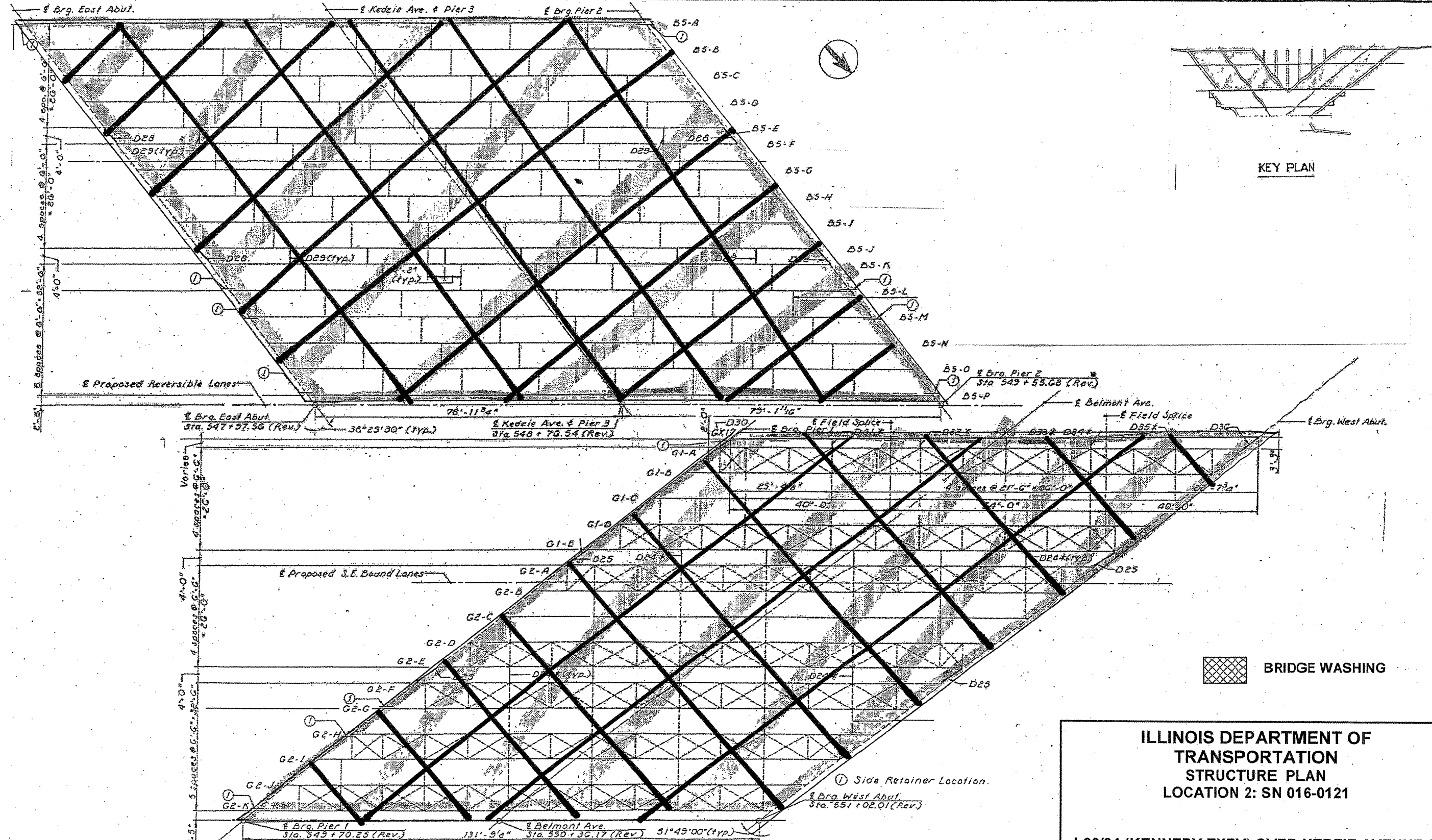


ROUTE	SECTION	COUNTY	TOTAL SHEETS	SHEET NUMBER
VARIOUS	2011-062-I	WILL & COOK	22	15



KEY PLAN

 BRIDGE WASHING

**ILLINOIS DEPARTMENT OF  
 TRANSPORTATION  
 STRUCTURE PLAN  
 LOCATION 2: SN 016-0121**

**I-90/94 (KENNEDY EXPY) OVER KEDZIE AVENUE &  
 BELMONT AVENUE**

SHEET 5 OF 5