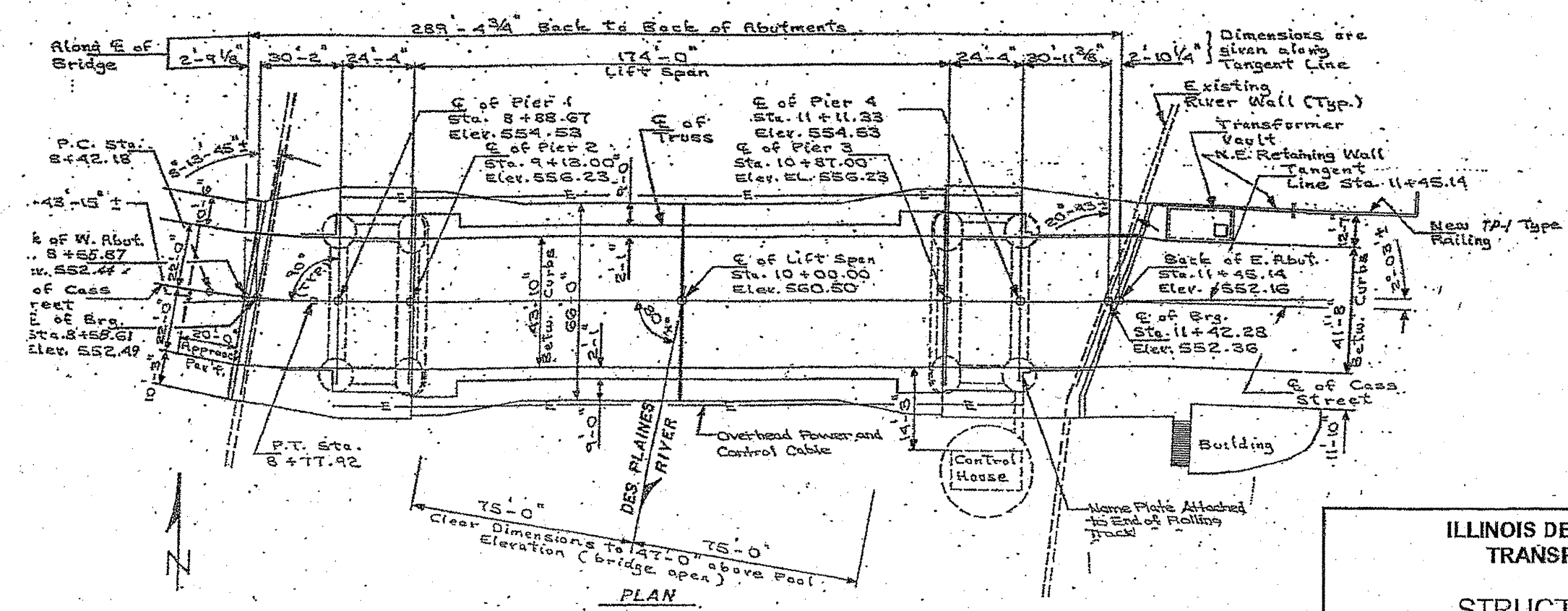
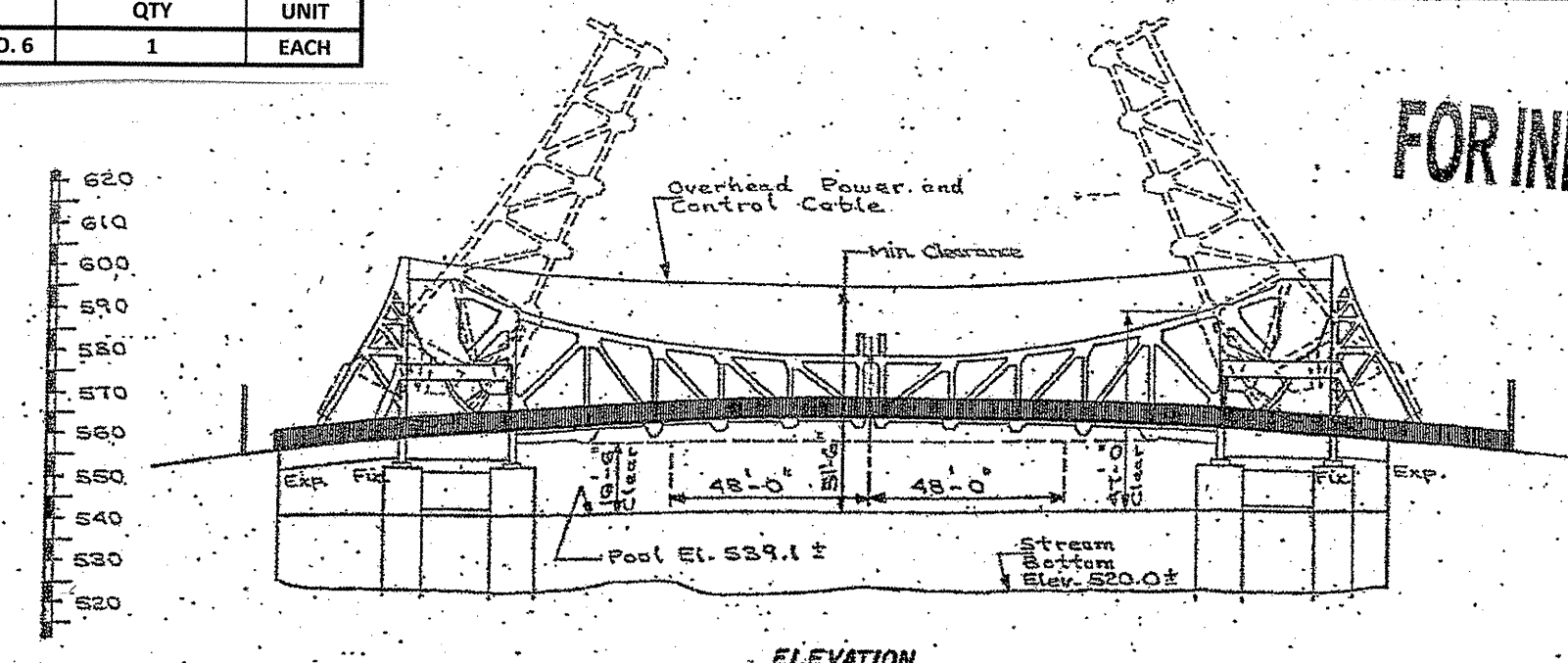


TOTAL BILL OF MATERIALS: SN 099-0101		
ITEM	QTY	UNIT
BRIDGE WASHING NO. 6	1	EACH

ROUTE	SECTION	COUNTY	TOTAL SHEETS	SHEET NUMBER
VARIOUS	2011-062-1	WILL & COOK	22	18

**FOR INFORMATION ONLY**



NOTE: --BRIDGE WASHING STRUCTURE NO. 6 INCLUDES ALL STEEL BEAMS AND GUSSET PLATES, TOPS OF BOTH ABUTMENTS, AND TOPS OF ALL PIER CAPS.

ILLINOIS DEPARTMENT OF TRANSPORTATION

STRUCTURE PLAN

LOCATION 6: SN 099-0101

CASS ST. BRIDGE