

STAGE II CONSTRUCTION:

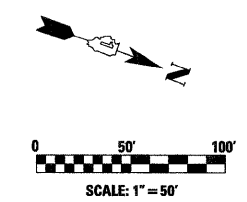
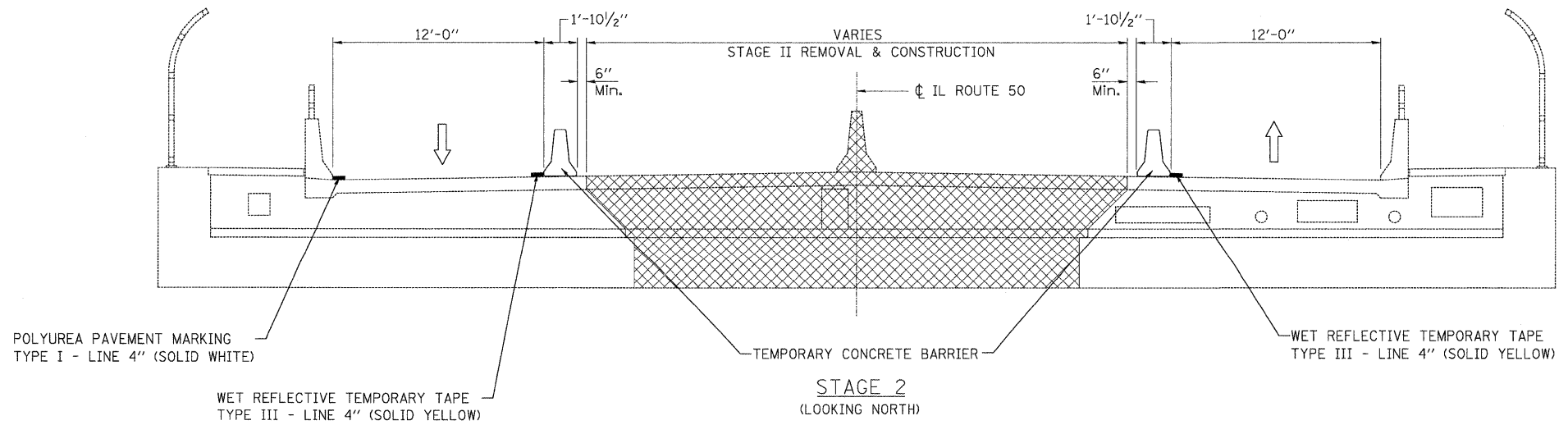
1. CLOSE INSIDE LANES OF IL ROUTE 50 IN ACCORDANCE WITH HIGHWAY STANDARD 701601-07 AND AS SHOWN IN THE PLANS.
2. PERFORM BRIDGE JOINT RECONSTRUCTION ON INSIDE LANES AS SHOWN IN THE PLANS.

NOTES:

1. ANY CLOSURES FOR INTERSTATE 90 SHALL BE IN ACCORDANCE WITH HIGHWAY STANDARDS 701400-05 AND 701401-06.

LEGEND

- REMOVAL
- WORK ZONE
- IMPACT ATTENUATOR, TEMPORARY
- TEMPORARY CONCRETE BARRIER
- SIGN
- TYPE II BARRICADE, DRUM, OR VERTICAL BARRICADE WITH STEADY BURN MONODIRECTIONAL LIGHT
- ARROWBOARD



USER NAME = #USER#	DESIGNED - SEW	REVISED -
PLOT SCALE = #SCALE#	DRAWN - RK	REVISED -
PLOT DATE = #DATE#	CHECKED - SEW	REVISED -
	DATE - 1/2012	REVISED -

**STATE OF ILLINOIS
DEPARTMENT OF TRANSPORTATION**

**MAINTENANCE OF TRAFFIC - STAGE 2
F.A.I. 90 (I-90) AT ILL 50 (CICERO AVENUE)**

SCALE: 1"=50' SHEET NO. 1 OF 1 SHEETS STA. 3+00 TO STA. 18+00

F.A.P. RTE. 350	SECTION 2011-063-1	COUNTY COOK	TOTAL SHEETS 18	SHEET NO. 5
FED. ROAD DIST. NO. 1 ILLINOIS		FED. AID PROJECT		

CONTRACT NO. 60P82