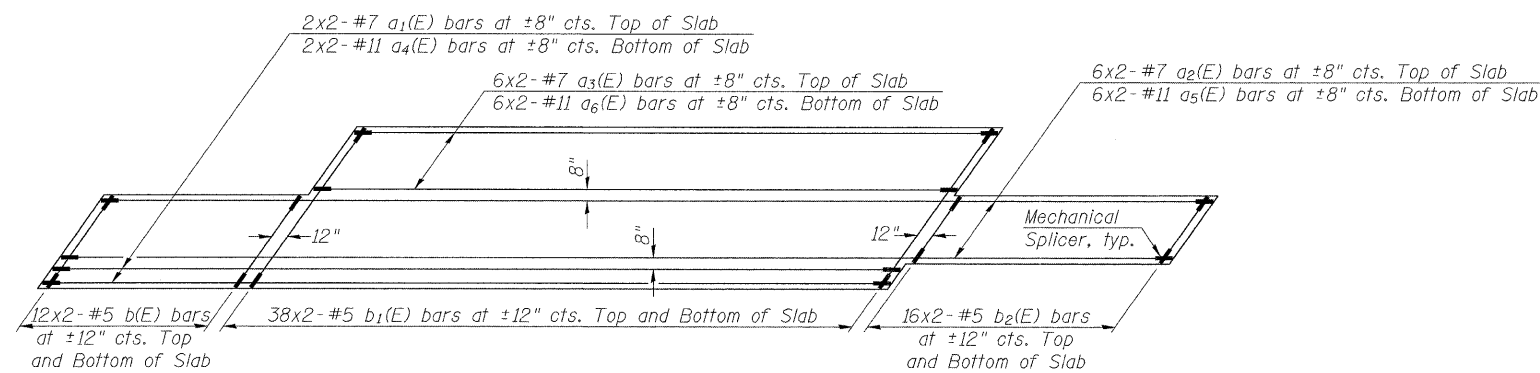
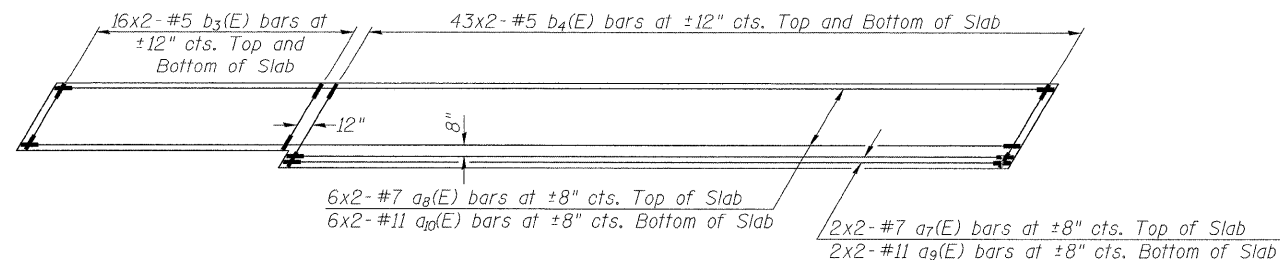


**PLAN - SHOWING
REMOVAL/CONSTRUCTION LIMITS FOR RIGID FRAME**
Limits measured in field by IDOT District One during August, 2011 inspection.



REINFORCEMENT PLAN - SOUTH SPAN



REINFORCEMENT PLAN - NORTH SPAN

MIN. BAR LAP

- #5 bar = 2'-0"
- #7 bar = 3'-2"
- #11 bar = 8'-2"

Notes:

Cross hatched area indicates full depth concrete removal (varies 3'-0" min. to 5'-0" max.).

Existing reinforcement shall be cut from face of concrete at a distance of the grip length specified by the manufacturer of the Mechanical Splicers for the bars to be spliced.

Existing reinforcement shall be cleaned and incorporated into the new construction except noted otherwise. Cost included with Concrete Removal.

The reinforcement bar, size, and spacing shown in the details are based on original design plans and may not match the as-built condition. If field conditions are different than what is shown in the contract plans, the Contractor shall revise the numbers, size, spacing and lengths to match existing conditions and submit to the Engineer for approval prior to ordering materials.

Bars indicated thus 6x2-#7 etc. indicates 6 lines of bars with 2 lengths per line.

The form work for the concrete shall not be supported from the ground, but shall be fastened to the rigid frame slab and shall not encroach in the minimum clearance limits shown on the contract plans. The form work shall be removed upon completion of the work.

For minimum lap lengths of reinforcement bars, see sheet 7 of 7. Work this sheet with sheet 4A of 7.

(Sheet 1 of 2)



USER NAME =	DESIGNED - TBP	REVISED -
FILE NAME =	CHECKED - MTH	REVISED -
PLOT SCALE =	DRAWN - AJF	REVISED -
PLOT DATE =	CHECKED - MTH	REVISED -

DESIGNED - TBP	REVISED -
CHECKED - MTH	REVISED -
DRAWN - AJF	REVISED -
CHECKED - MTH	REVISED -

DESIGNED - TBP	REVISED -
CHECKED - MTH	REVISED -
DRAWN - AJF	REVISED -
CHECKED - MTH	REVISED -

**STATE OF ILLINOIS
DEPARTMENT OF TRANSPORTATION**

**RIGID FRAME RECONSTRUCTION DETAILS-1
STRUCTURE NO. 016-0400**

SHEET NO. 4 OF 7 SHEETS

F.A.P. RTE.	SECTION	COUNTY	TOTAL SHEETS	SHEET NO.
350	2011-063-1	COOK	18	10
CONTRACT NO. 60P82			ILLINOIS FED. AID PROJECT	