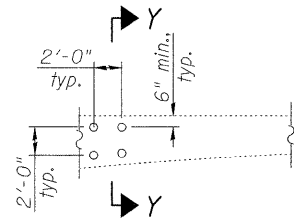
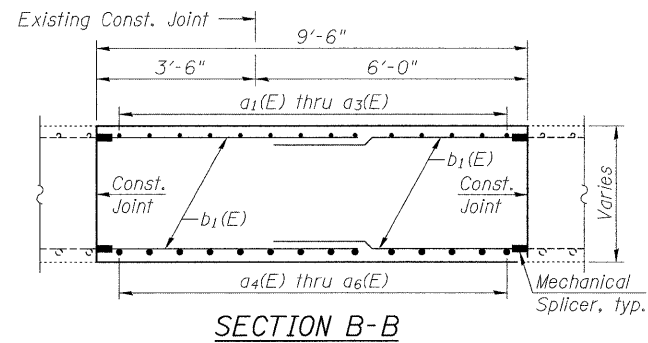
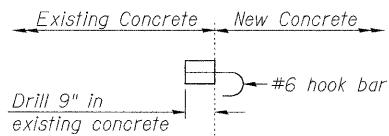
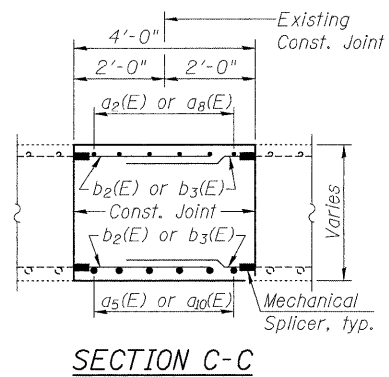


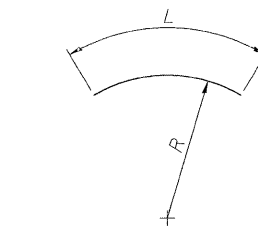
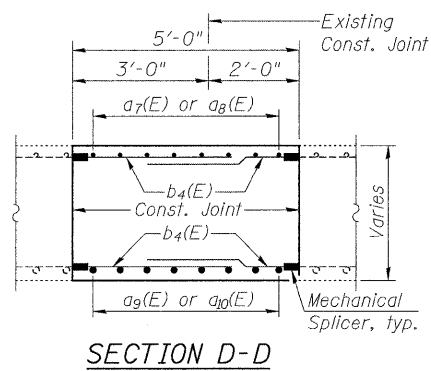
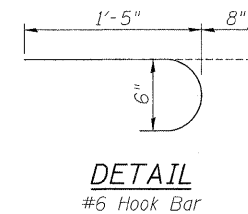
SECTION E-E
(Typical Concrete Removal at Piers and Abutment)



VIEW X-X
(Drill and epoxy grout hook bars in grid. Each face of Concrete Removal except on Piers and Abutment face. Cost included with Reinforcement Bars, Epoxy Coated.)



SECTION Y-Y



BARS a4(E), a5(E), a6(E), a9(E) and a10(E)

Bar	R	L
a4(E)	400'	29'-1"
a5(E)	400'	36'-10"
a6(E)	400'	23'-1"
a9(E)	350'	25'-7"
a10(E)	350'	33'-7"

**SUPERSTRUCTURE
BILL OF MATERIAL**

Bar	No.	Size	Length	Shape
a1(E)	4	#7	26'-7"	—
a2(E)	12	#7	34'-4"	—
a3(E)	12	#7	20'-7"	—
a4(E)	4	#11	29'-1"	⌒
a5(E)	12	#11	36'-10"	⌒
a6(E)	12	#11	23'-1"	⌒
a7(E)	4	#7	23'-1"	—
a8(E)	12	#7	31'-1"	—
a9(E)	4	#11	25'-7"	⌒
a10(E)	12	#11	33'-7"	⌒
b(E)	48	#5	4'-4"	—
b1(E)	152	#5	6'-10"	—
b2(E)	64	#5	3'-6"	—
b3(E)	64	#5	3'-4"	—
b4(E)	172	#5	3'-11"	—
Concrete Removal			Cu. Yd.	113.6
Concrete Superstructure			Cu. Yd.	113.6
Reinforcement Bars, Epoxy Coated			Pound	12100

Note:
Work this sheet with sheet 4 of 7.

(Sheet 2 of 2)