

Notes:
 Cost of Timber, Fasteners, Steel Plate and all associated labor and materials is included with Structure Excavation.
 Existing reinforcement shall be cleaned and incorporated into the new construction except noted otherwise. Cost included with Concrete Removal.
 Existing Waterproofing Membrane shall be cut a minimum of 6" from the concrete removal line to leave enough material to lap with new membrane.
 Existing reinforcement shall be cut from face of concrete removal line or pavement removal line at a distance of the grip length specified by the manufacturer of the Mechanical Splicers for the bars to be spliced.

**PLAN - SHOWING REMOVAL LIMITS
 FOR PCC PAVEMENT, BARRIERS & SIDEWALK**

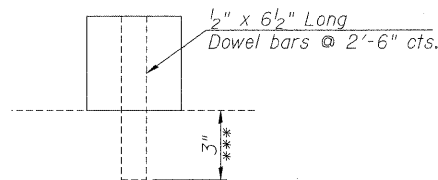
Limits based on field measurements by IDOT District One during August, 2011 inspection.

BILL OF MATERIAL

Item	Unit	Total
Pavement Removal	Sq. Yd.	195
Sidewalk Removal	Sq. Ft.	597
Structure Excavation	Cu. Yd.	266

See sheet 4A of 7 for quantity of Concrete Removal.

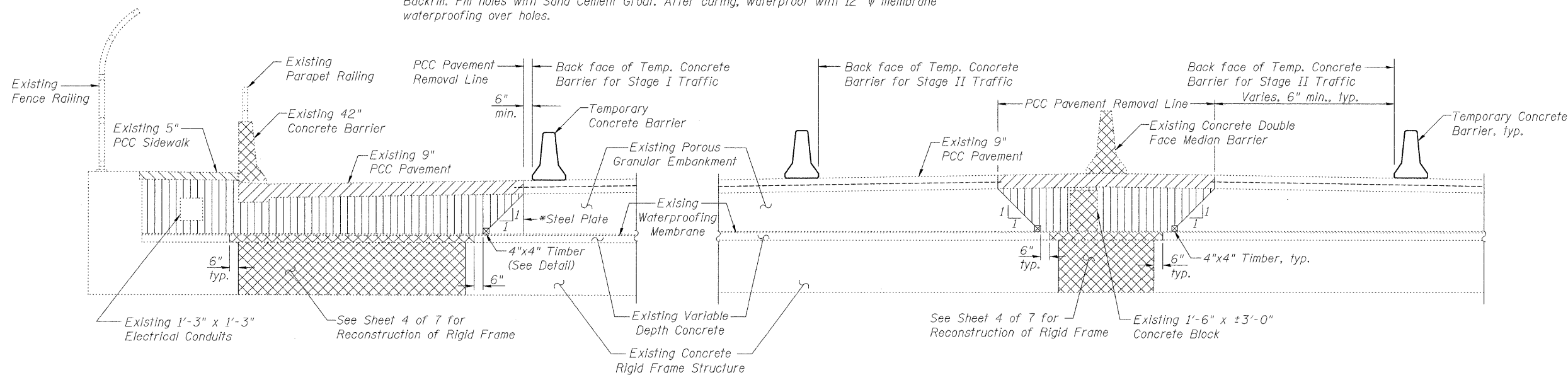
- * When 1:1 slope is not attainable, a 1/2" thick steel plate shall be vibrated down to top of rigid frame for supporting the existing porous Granular Embankment. Provide minimum 5 feet bearing past the excavation point on each end.
- ** It is the Contractor's responsibility to keep a log of reinforcement bars showing numbers, size, shape and lengths which fall off during concrete removal operation.
- *** Drill 3/4" ϕ x 3" deep holes to miss existing reinforcement bars. Remove Timber & Dowels during Backfill. Fill holes with Sand Cement Grout. After curing, waterproof with 12" ϕ membrane waterproofing over holes.



4"x4" TIMBER

LEGEND

- Concrete Removal **
- Pavement Removal
- Sidewalk Removal
- Structure Excavation



SECTION F-F

SECTION G-G



USER NAME =	DESIGNED - TBP	REVISED -
FILE NAME =	CHECKED - MTH	REVISED -
PLOT SCALE =	DRAWN - AJF	REVISED -
PLOT DATE =	CHECKED - MTH	REVISED -

**STATE OF ILLINOIS
 DEPARTMENT OF TRANSPORTATION**

**PCC PAVEMENT REMOVAL DETAILS
 STRUCTURE NO. 016-0400**

SHEET NO. 5 OF 7 SHEETS

F.A.P. RTE.	SECTION	COUNTY	TOTAL SHEETS	SHEET NO.
350	2011-063-I	COOK	18	11
CONTRACT NO. 60P82			ILLINOIS FED. AID PROJECT	