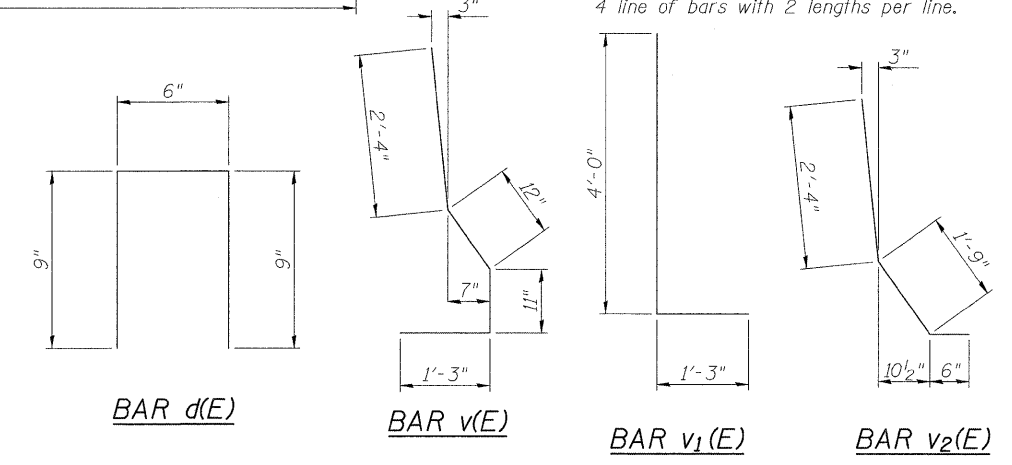
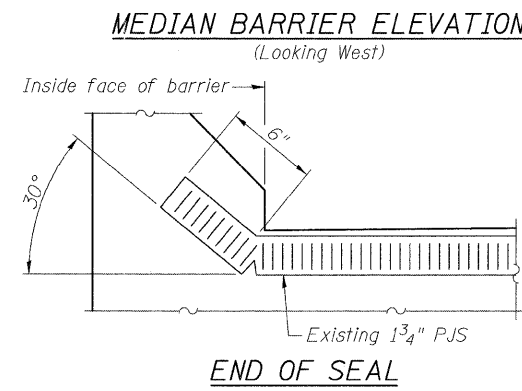
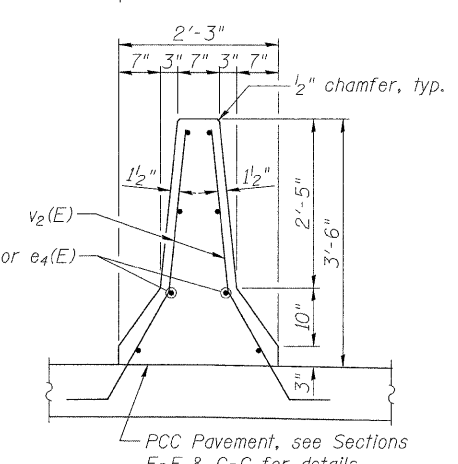
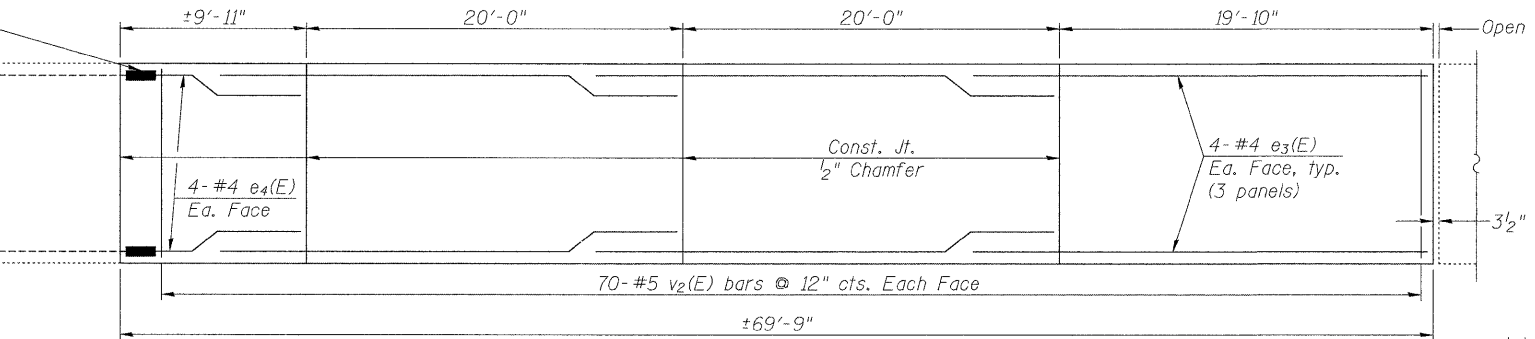
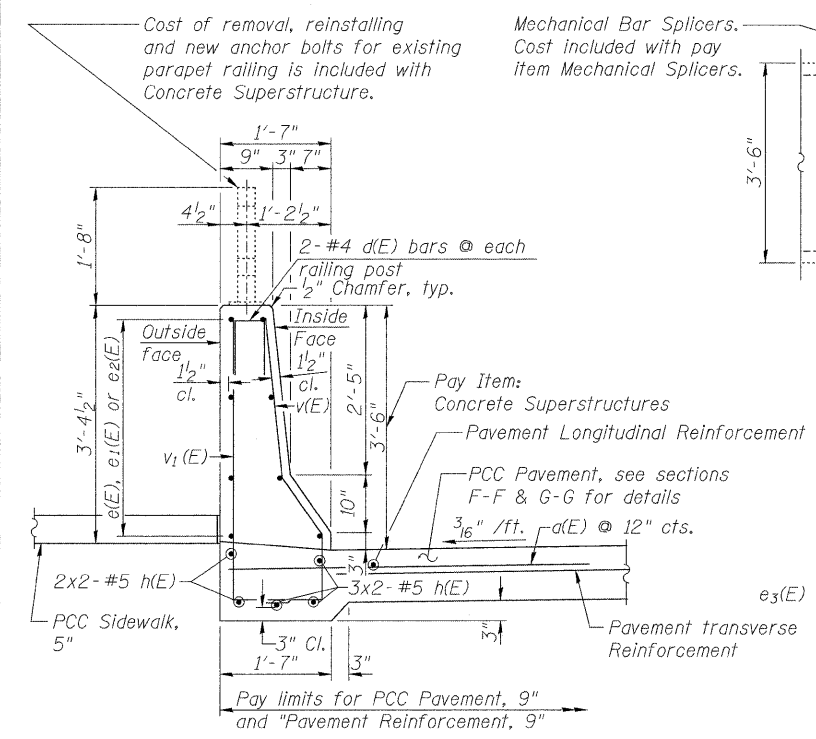
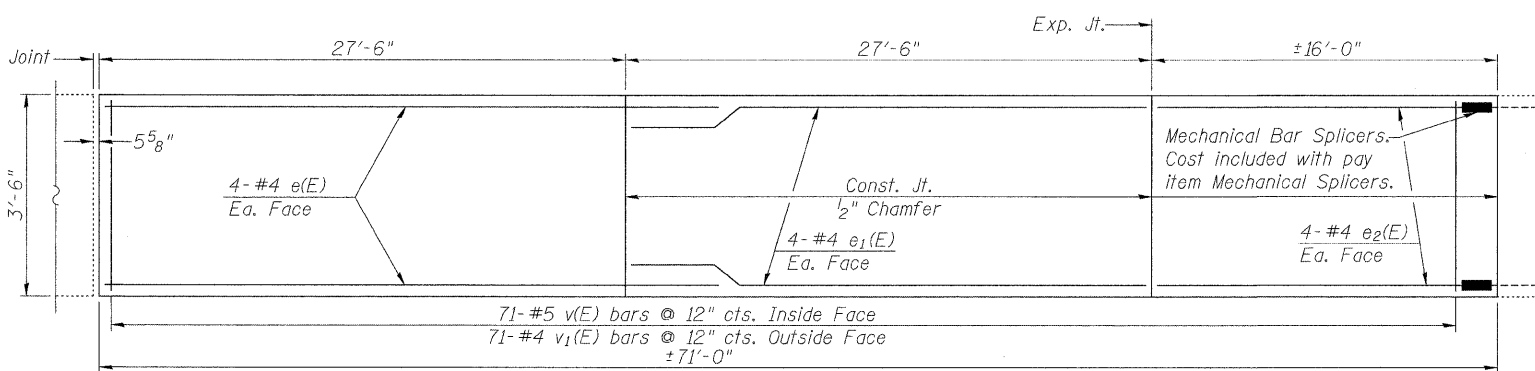
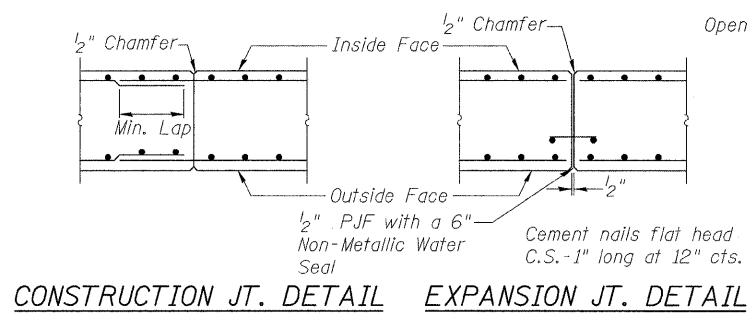


**SUPERSTRUCTURE  
BILL OF MATERIAL**

Bar	No.	Size	Length	Shape	
d(E)	63	#5	5'-0"	—	
d(E)	20	#4	2'-0"	□	
e(E)	8	#4	29'-8"	—	
e <sub>1</sub> (E)	8	#4	27'-4"	—	
e <sub>2</sub> (E)	8	#4	15'-10"	—	
e <sub>3</sub> (E)	24	#4	22'-4"	—	
e <sub>4</sub> (E)	8	#4	9'-9"	—	
h(E)	10	#5	36'-11"	—	
v(E)	71	#5	5'-6"	—	
v <sub>1</sub> (E)	71	#4	5'-3"	—	
v <sub>2</sub> (E)	140	#5	4'-7"	—	
Reinforcement Bars, Epoxy Coated				Pound	2870
Concrete Superstructure				Cu. Yd.	19.4
Continuously Reinforced PCC Pavement, 9"				Sq. Yd.	195
Pavement Reinforcement				Sq. Yd.	195
PCC Sidewalk, 5"				Sq. Ft.	597
Waterproofing Membrane System, (Special)				Sq. Yd.	86

Bars indicated thus 4 x 2-#5 etc. indicates 4 line of bars with 2 lengths per line.



**MIN BAR LAP**  
 #4 = 2'-4"  
 #5 = 2'-10"

**Notes:**  
 All reinforcement shown on this sheet will be paid for under "Pavement Reinforcement" except bars d(E), d(E), e(E) thru e<sub>4</sub>(E), h(E) and v(E) thru v<sub>2</sub>(E).  
 For location of Section F-F and G-G see sheet 5 of 7  
 \*\*\*Existing 1 3/4" Preformed Joint Seal to be reinstalled at abutments  
 All anchor devices, and plates shall be galvanized after shop fabrication in accordance with AASHTO M-111 and ASTM A-385. All bolts, nuts, and washers shall be galvanized in accordance with AASHTO M-232.

