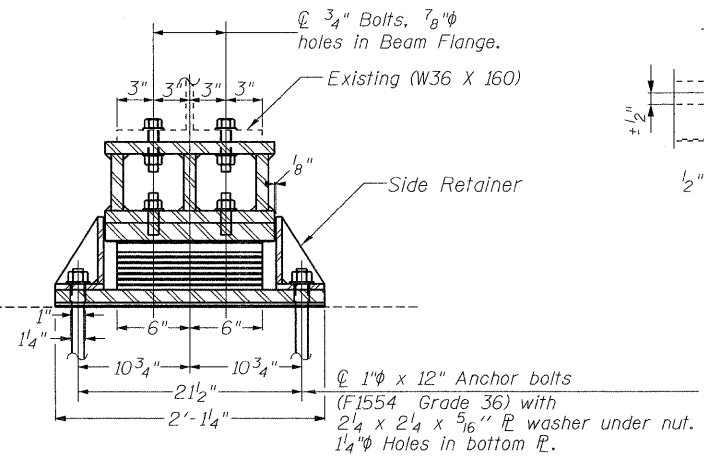
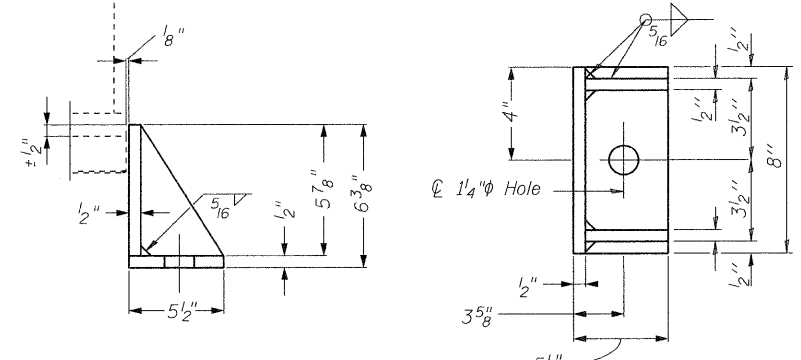


ELEVATION AT ABUT.

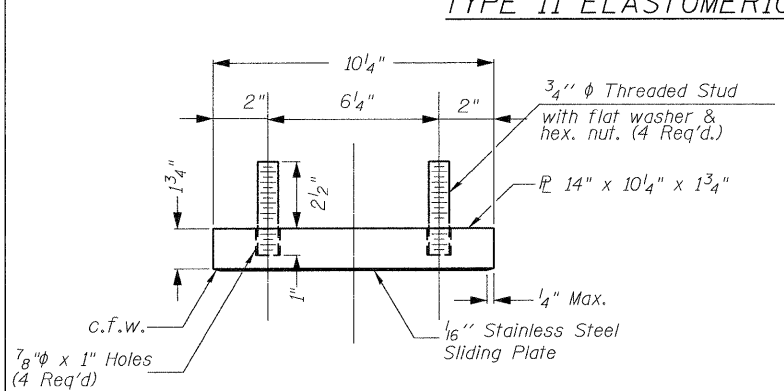


SECTION A-A

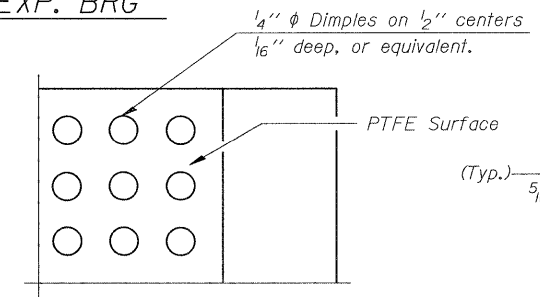


SIDE RETAINER
Equivalent rolled angle with stiffeners will be allowed in lieu of welded plates.

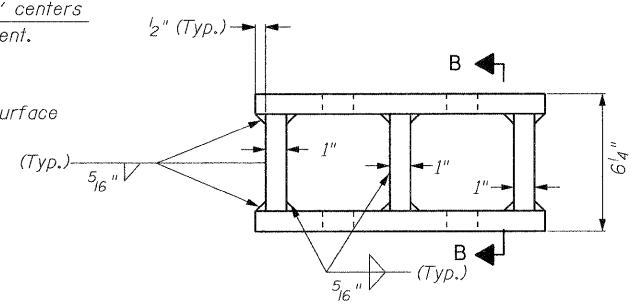
TYPE II ELASTOMERIC EXP. BRG



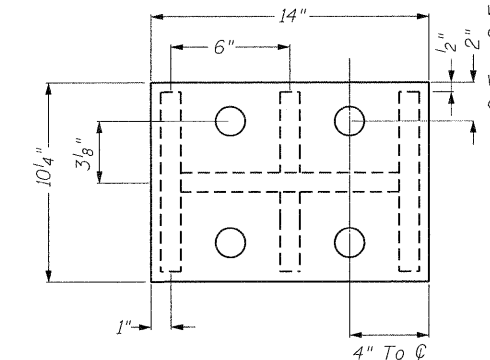
TOP BEARING ASSEMBLY



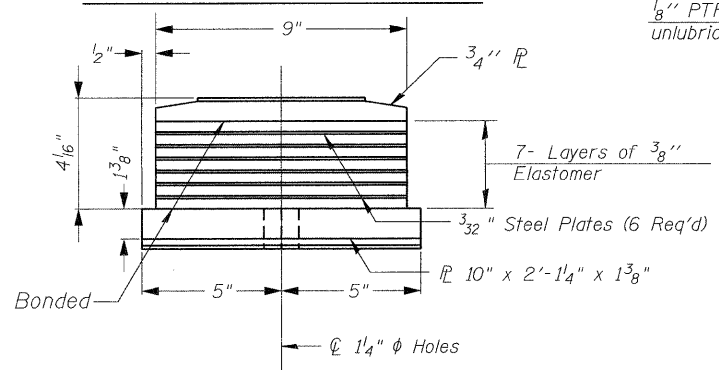
PLAN-PTFE SURFACE



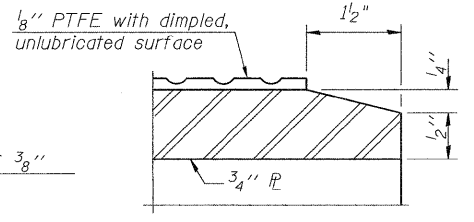
STEEL EXTENSION DETAIL



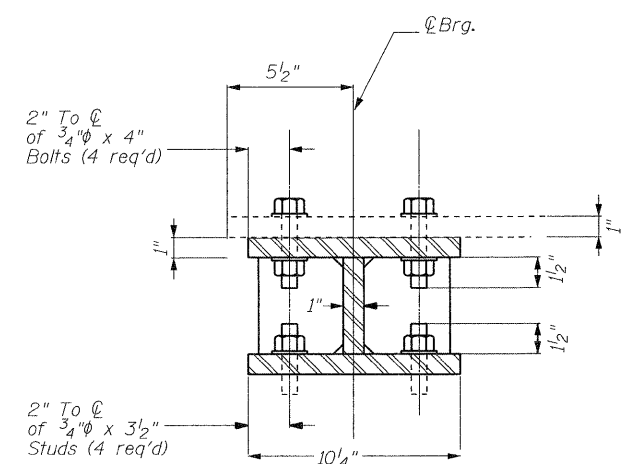
PLAN TOP/BOTTOM PLATE



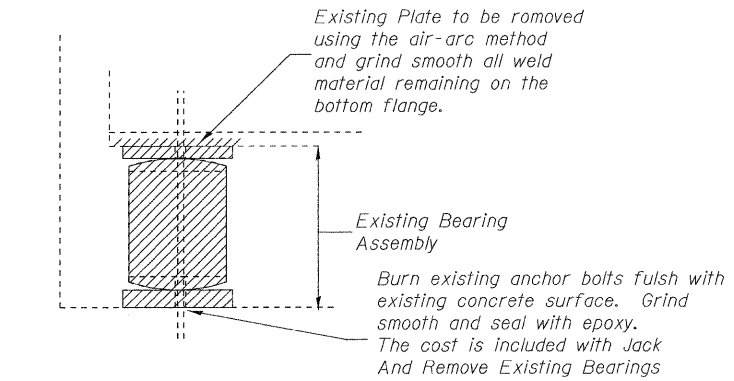
BOTTOM BEARING ASSEMBLY



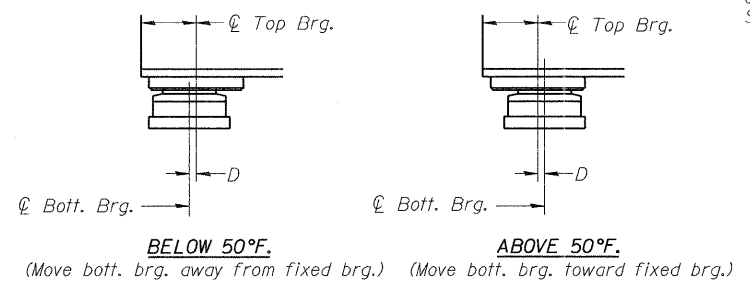
SECTION THRU PTFE



SECTION B-B



EXISTING BEARING REMOVAL



SETTING ANCHOR BOLTS AT EXP. BRG.
D = 3/8" per each 100' of expansion for every 15° temp. change from the normal temp. of 50°F.

Notes:
For the details of existing bearings see sheet number 18
Anchor bolts shall be ASTM F1554 all-thread (or an Engineer-approved alternate material) of the grade(s) and diameter(s) specified. ASTM A307 Grade C anchor bolts may be used in lieu of ASTM F1554 Grade 36 (Fy=36ksi). The corresponding specified grade of AASHTO M314 anchor bolts may be used in lieu of ASTM F1554.
Anchor bolts for Type II bearings shall be placed in holes drilled in the concrete through holes in the bottom bearing plate after members are in place. Side retainers shall be placed after bolts are installed.
Drilled and set anchor bolts shall be installed according to Article 521.06 of the Standard Specifications.
Side retainers and other steel members required for the elastomeric bearing assembly shall be included in the cost of Elastomeric Bearing Assembly, Type II.
The 1/8" PTFE sheet shall be bonded directly to the top steel plate with a two-component, medium viscosity epoxy resin, conforming to the requirements of the Federal Specification MMM-A-134, Type I. The bond agent shall be applied on the full area of the contact surfaces.
Bonding of 1/8" PTFE sheet during vulcanizing process will be permitted provided the process and method of adjusting assembly height is approved by the Engineer.
Prior to ordering any material the Contractor shall verify in the field all bearing height and shim thickness dimensions

BILL OF MATERIAL

Item	Unit	Total
Elastomeric Bearing Assembly Type II	Each	12
Furnish And Erecting Structural Steel	Lbs.	1570
Jack and Remove Existing Bearings	Each	12
Anchor Bolts 1"φ	Each	24

REACTIONS SN 016-2429

	NO. ABUT (kips)
R DL	18.5
R SDL	9.7
R LL	35
R Imp	9.0
R TOTAL	63.2