

ROUTE	SECTION	COUNTY	TOTAL SHEETS	SHEET NUMBER
FAP 350	2011-064-I	COOK	28	19

CONTRACT NO.: 60P83

STATE OF ILLINOIS  
DEPARTMENT OF PUBLIC WORKS & BUILDINGS  
DIVISION OF HIGHWAYS

**FOR INFORMATION ONLY**

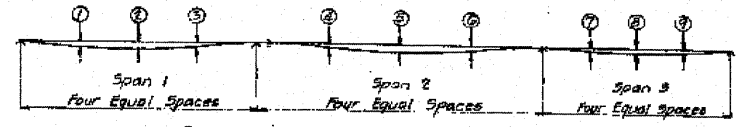
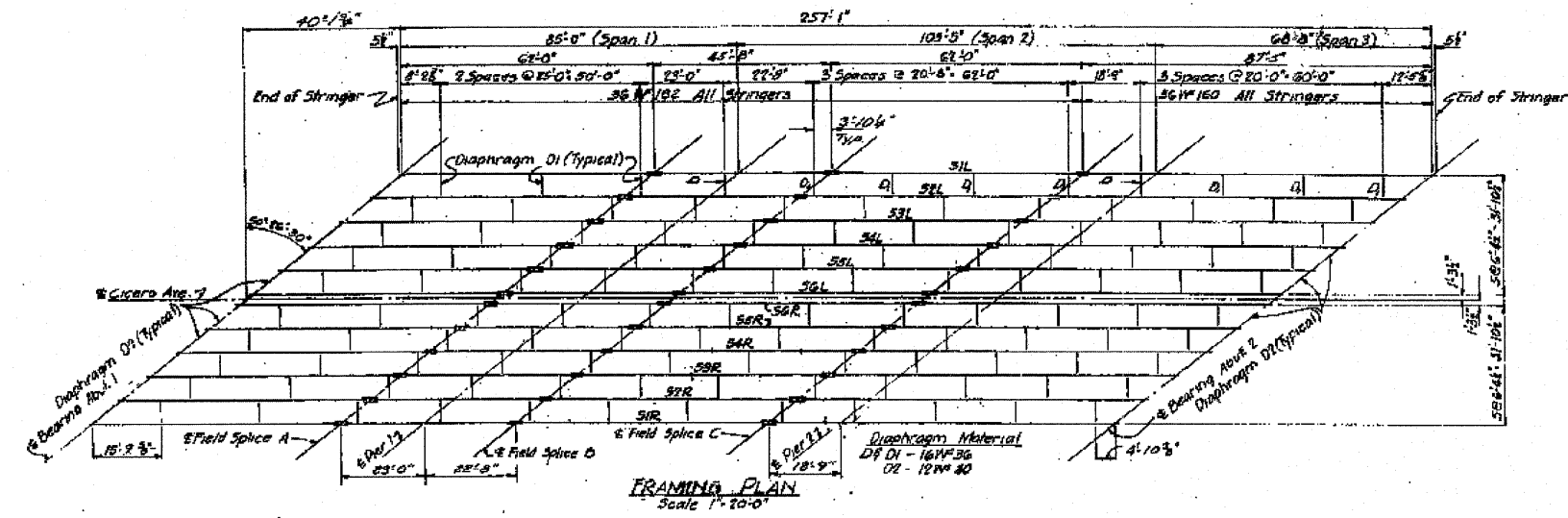


TABLE OF STRINGER DEAD LOAD DEFLECTIONS

Span	1	2	3	4	5	6	7	8	9
S1	1/4"	1/4"	1/4"	1/4"	1/4"	1/4"	1/4"	1/4"	1/4"
S2-S3	1/4"	1/4"	1/4"	1/4"	1/4"	1/4"	1/4"	1/4"	1/4"
S4	1/4"	1/4"	1/4"	1/4"	1/4"	1/4"	1/4"	1/4"	1/4"

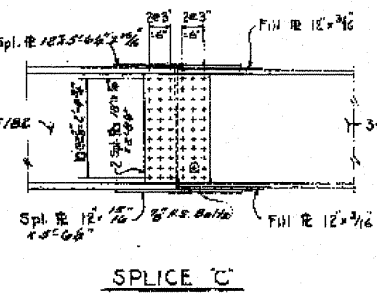
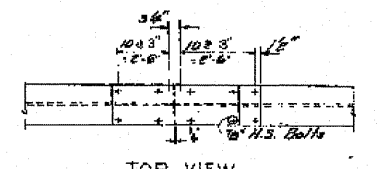
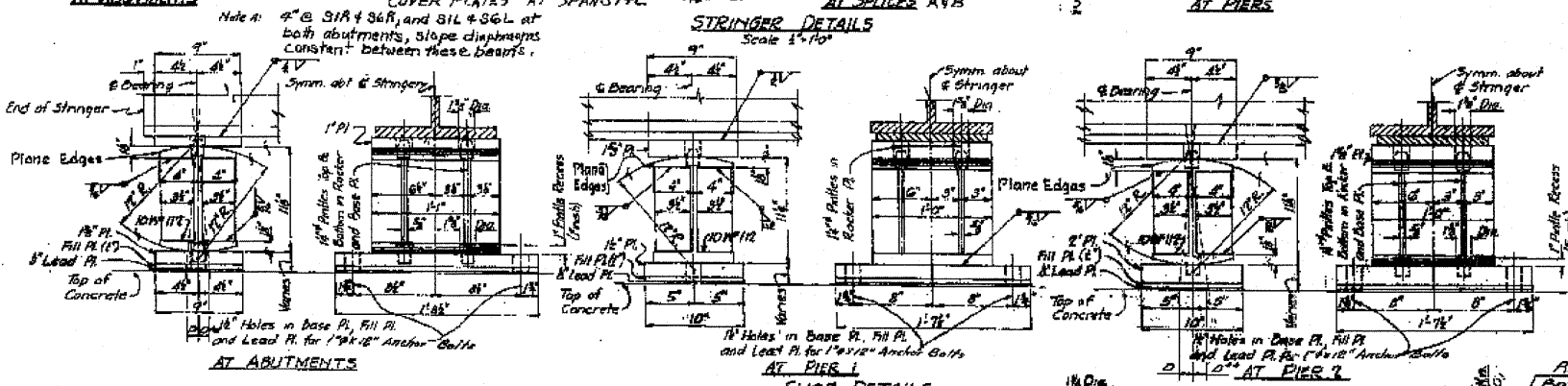
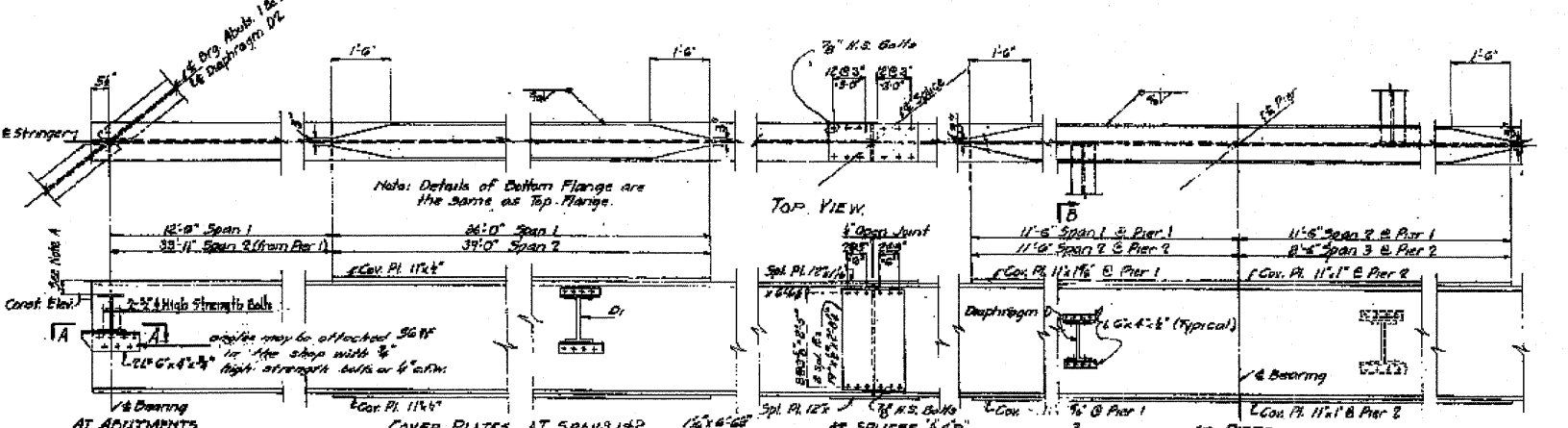
Note: The above deflections are not to be used in the field if the engineer is working from the grade elevations adjusted for dead load deflections as shown on Sheet 647.

TABLE OF TOP OF TOP FLANGE (IN) OF STRINGERS

Station	Abut. 1	Sp. A	Pier 1	Sp. B	Sp. C	Pier 2	Abut. 2
S1R	627.86	627.78	627.75	627.73	627.68	627.35	626.86
S1L	627.87	627.77	627.74	627.71	627.66	627.30	626.79
S2R	627.98	627.80	627.79	627.78	627.74	627.30	626.77
S2L	627.99	627.84	627.79	627.78	627.74	627.29	626.75
S3R	628.09	627.87	627.86	627.77	627.74	627.30	626.77
S3L	628.09	627.86	627.86	627.77	627.74	627.29	626.77
S4R	628.09	627.86	627.86	627.77	627.74	627.29	626.77
S4L	628.09	627.86	627.86	627.77	627.74	627.29	626.77
S5R	628.09	627.86	627.86	627.77	627.74	627.29	626.77
S5L	628.09	627.86	627.86	627.77	627.74	627.29	626.77
S6R	628.09	627.86	627.86	627.77	627.74	627.29	626.77
S6L	628.09	627.86	627.86	627.77	627.74	627.29	626.77

TABLE OF FILL THICKNESSES FOR SHOES

Stringer	Abut. 1	Pier 1	Pier 2	Abut. 2
S1R	0	0	0	0
S1L	0	0	0	0
S2R	0	0	0	0
S2L	0	0	0	0
S3R	0	0	0	0
S3L	0	0	0	0
S4R	0	0	0	0
S4L	0	0	0	0
S5R	0	0	0	0
S5L	0	0	0	0
S6R	0	0	0	0
S6L	0	0	0	0



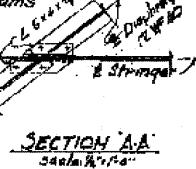
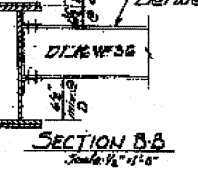
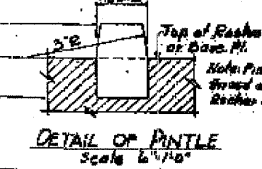
**NOTES ON SETTING OF ANCHOR BOLTS AT EXP. BEARINGS**

a) D\* (Side of Brg. away from fixed Brg.)  
D\* = 1/8" per each 100' of expansion for every 15° fall below the normal temp. of 50°F.

D\*\* (Side of Brg. toward fixed Brg.)  
D\*\* = 1/8" per each 100' of expansion for every 15° rise above the normal temp. of 50°F.

b) After bms. have been erected and dimensions D\* or D\*\* determined, holes shall be drilled and anchor bolts shall be grouted in place. All fixed anchor bolts may be built into the masonry.

DESIGNED	N.C.E.	ENGINEER	BRIDGE ENGINEER AND TRAFFIC ENGINEER
CHECKED	S.B.	PASSED	CHIEF OF BRIDGE
DRAWN	N.C.E.	APPROVED	BRIDGE ENGINEER
CHECKED	S.B.		



**FRAMING PLAN AND DETAILS**  
S.B.I. RTE. 50 CICERO AVENUE BRIDGE  
OVER B.O.C.T.R.R. TRACKS  
PROJECT UG-141(21)  
FA. RTE. 99 SEC. 3068-Z-VB4W  
COOK COUNTY  
STATION 44+99.01  
KNOERLE, GRAEF, BENDER AND ASSOCIATES INC.  
CONSULTING ENGINEERS - CHICAGO, ILLINOIS