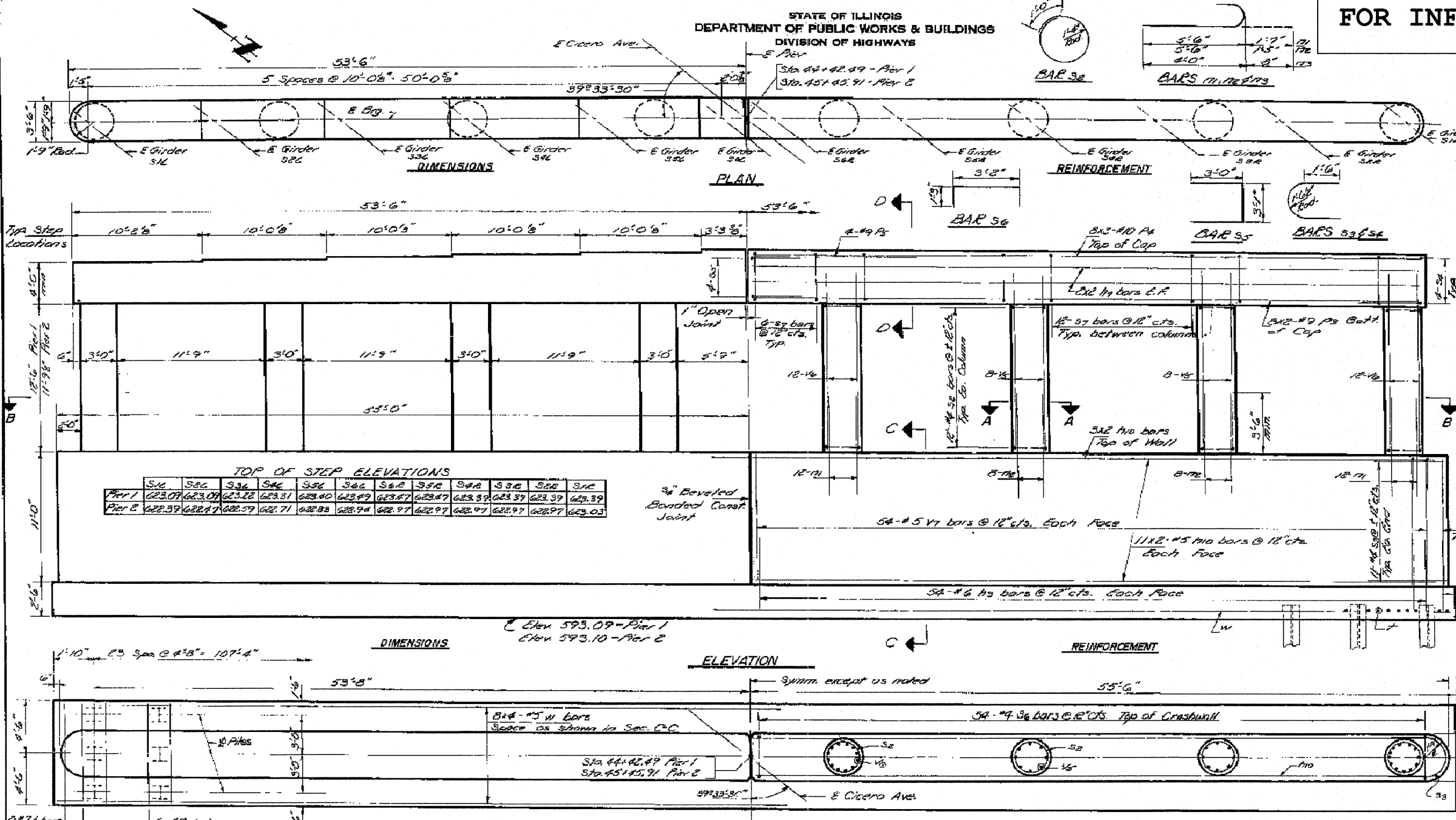


ROUTE	SECTION	COUNTY	TOTAL SHEETS	SHEET NUMBER
FAP 350	2011-064-I	COOK	28	22

CONTRACT NO.: 60P83

FOR INFORMATION ONLY



**TWO PIERS
BILL OF MATERIAL**

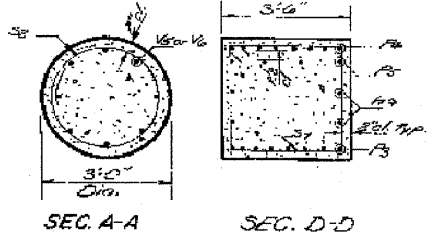
Bar	No.	Size	Length	Shape
1A	32	#5	26'-16"	—
1A2	200	#5	27'-6"	—
1B	98	#11	7'-11"	—
1B2	68	#10	6'-11"	—
1B3	452	#6	4'-8"	—
1C	64	#9	27'-6"	—
1C2	68	#10	27'-6"	—
1C3	18	#9	10'-6"	—
1D	198	#8	9'-5"	—
1D2	84	#8	7'-11"	—
1D3	16	#8	9'-4"	—
1D4	216	#8	3'-9"	—
1D5	168	#5	14'-6"	—
1E	288	#7	8'-9"	—
1F	64	#10	14'-9"	—
1F2	96	#11	14'-9"	—
1F3	452	#6	10'-9"	—
1G	68	#5	28'-9"	—

Class A Excavation	cu. Yds.	816
Class X Concrete	cu. Yds.	666.9
Reinforcement Bars	Lbs.	64,150
Steel Piles (B.P.P.)	lin. ft.	6,280
Test Piles Steel	Each	1

TOP OF STEP ELEVATIONS

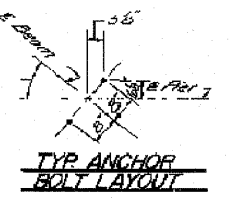
Station	S16	S16C	S36	S46	S56	S66	S76	S86	S96	S106	S116	S126	S136
Pier 1	623.09	623.09	623.12	623.31	623.40	623.49	623.47	623.47	623.39	623.39	623.39	623.39	623.39
Pier 2	622.39	622.47	622.59	622.71	622.88	622.94	622.97	622.97	622.97	622.97	622.97	622.97	623.03

DESIGNED	S. Madonia	EXAMINED	19
CHECKED		PASSED	
DRAWN	D. Darringer	APPROVED	
CHECKED	G.M.		



Notes: Exposed edges shall be beveled 3/8".
Pier steps manufactured with the cap.
Space reinforcing in the cap to miss anchor bolts.

PILE DATA
Type: Steel B.P.P.36
Capacity: Refusal
Est. Length: 16 ft.
No. Piers: 189 + 1 Test = 190 Piers



PIERS 1 AND 2
S.B.I. RT.50 CICERO AVE. BRIDGE
OVER B.&O. CT. R.R. TRACKS
PROJECT UG-14(21)
F.A. RT.99 SEC.3068-Z-VB&W
COOK COUNTY
STA. 44+99.01