



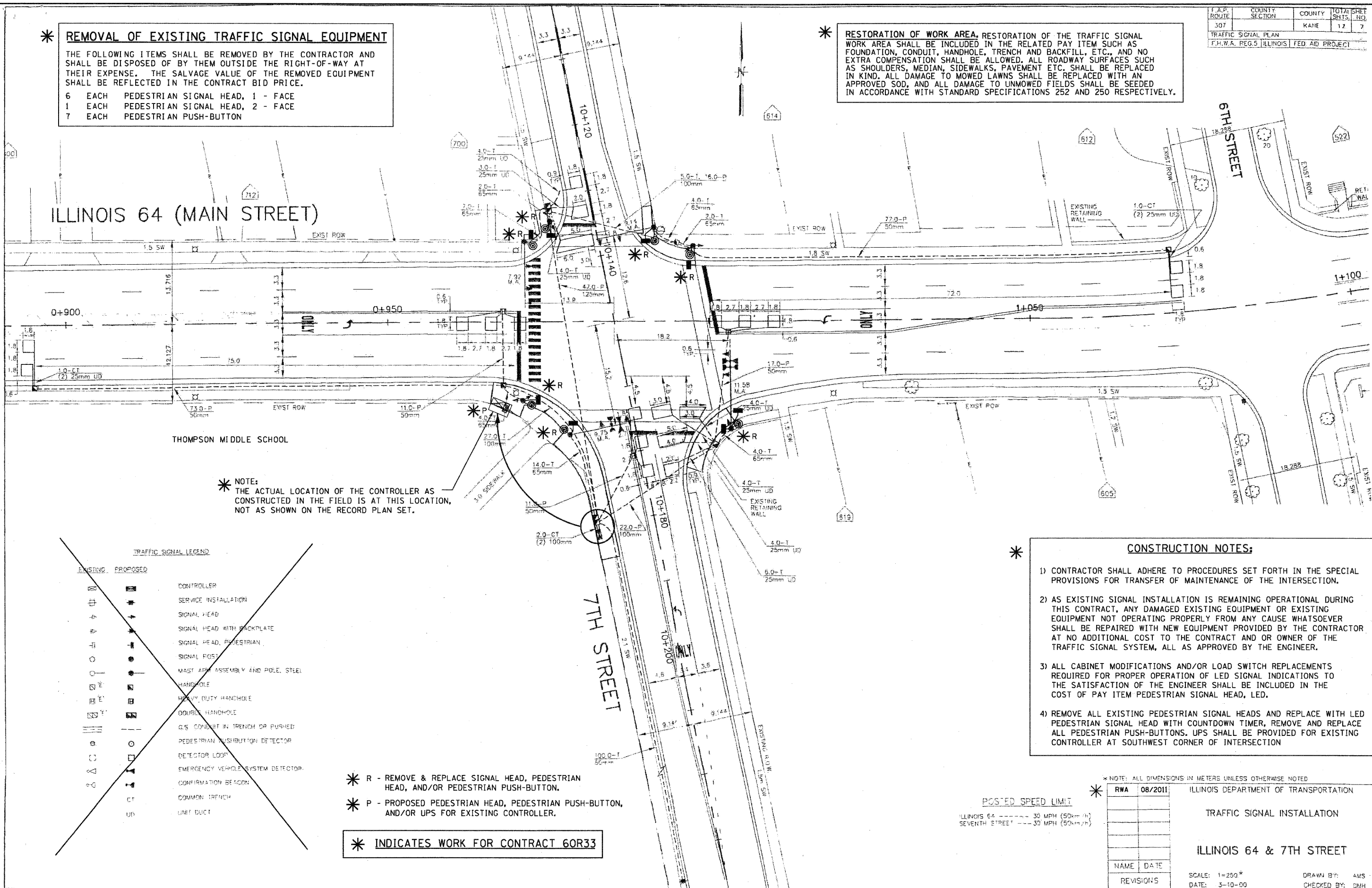
| F.A.P. ROUTE | COUNTY SECTION | COUNTY | TOTAL SHEET SITS. NO. | SHEET NO. |
|---|----------------|--------|-----------------------|-----------|
| 307 | | KANE | 17 | 7 |
| TRAFFIC SIGNAL PLAN | | | | |
| F.H.W.A. PEG.5 ILLINOIS FED AID PROJECT | | | | |

*** REMOVAL OF EXISTING TRAFFIC SIGNAL EQUIPMENT**

THE FOLLOWING ITEMS SHALL BE REMOVED BY THE CONTRACTOR AND SHALL BE DISPOSED OF BY THEM OUTSIDE THE RIGHT-OF-WAY AT THEIR EXPENSE. THE SALVAGE VALUE OF THE REMOVED EQUIPMENT SHALL BE REFLECTED IN THE CONTRACT BID PRICE.

6 EACH PEDESTRIAN SIGNAL HEAD, 1 - FACE
 1 EACH PEDESTRIAN SIGNAL HEAD, 2 - FACE
 7 EACH PEDESTRIAN PUSH-BUTTON

*** RESTORATION OF WORK AREA, RESTORATION OF THE TRAFFIC SIGNAL WORK AREA SHALL BE INCLUDED IN THE RELATED PAY ITEM SUCH AS FOUNDATION, CONDUIT, HANDHOLE, TRENCH AND BACKFILL, ETC., AND NO EXTRA COMPENSATION SHALL BE ALLOWED. ALL ROADWAY SURFACES SUCH AS SHOULDERS, MEDIAN, SIDEWALKS, PAVEMENT ETC. SHALL BE REPLACED IN KIND. ALL DAMAGE TO MOWED LAWNS SHALL BE REPLACED WITH AN APPROVED SOD, AND ALL DAMAGE TO UNMOWED FIELDS SHALL BE SEEDED IN ACCORDANCE WITH STANDARD SPECIFICATIONS 252 AND 250 RESPECTIVELY.**



*** NOTE:**
 THE ACTUAL LOCATION OF THE CONTROLLER AS CONSTRUCTED IN THE FIELD IS AT THIS LOCATION, NOT AS SHOWN ON THE RECORD PLAN SET.

*** CONSTRUCTION NOTES:**

- 1) CONTRACTOR SHALL ADHERE TO PROCEDURES SET FORTH IN THE SPECIAL PROVISIONS FOR TRANSFER OF MAINTENANCE OF THE INTERSECTION.
- 2) AS EXISTING SIGNAL INSTALLATION IS REMAINING OPERATIONAL DURING THIS CONTRACT, ANY DAMAGED EXISTING EQUIPMENT OR EXISTING EQUIPMENT NOT OPERATING PROPERLY FROM ANY CAUSE WHATSOEVER SHALL BE REPAIRED WITH NEW EQUIPMENT PROVIDED BY THE CONTRACTOR AT NO ADDITIONAL COST TO THE CONTRACT AND/OR OWNER OF THE TRAFFIC SIGNAL SYSTEM, ALL AS APPROVED BY THE ENGINEER.
- 3) ALL CABINET MODIFICATIONS AND/OR LOAD SWITCH REPLACEMENTS REQUIRED FOR PROPER OPERATION OF LED SIGNAL INDICATIONS TO THE SATISFACTION OF THE ENGINEER SHALL BE INCLUDED IN THE COST OF PAY ITEM PEDESTRIAN SIGNAL HEAD, LED.
- 4) REMOVE ALL EXISTING PEDESTRIAN SIGNAL HEADS AND REPLACE WITH LED PEDESTRIAN SIGNAL HEAD WITH COUNTDOWN TIMER, REMOVE AND REPLACE ALL PEDESTRIAN PUSH-BUTTONS. UPS SHALL BE PROVIDED FOR EXISTING CONTROLLER AT SOUTHWEST CORNER OF INTERSECTION

TRAFFIC SIGNAL LEGEND

| EXISTING | PROPOSED | DESCRIPTION |
|----------|----------|-----------------------------------|
| [Symbol] | [Symbol] | CONTROLLER |
| [Symbol] | [Symbol] | SERVICE INSTALLATION |
| [Symbol] | [Symbol] | SIGNAL HEAD |
| [Symbol] | [Symbol] | SIGNAL HEAD WITH BACKPLATE |
| [Symbol] | [Symbol] | SIGNAL HEAD, PEDESTRIAN |
| [Symbol] | [Symbol] | SIGNAL POST |
| [Symbol] | [Symbol] | MAST ARM ASSEMBLY AND POLE, STEEL |
| [Symbol] | [Symbol] | HANDHOLE |
| [Symbol] | [Symbol] | HEAVY DUTY HANDHOLE |
| [Symbol] | [Symbol] | DOUBLE HANDHOLE |
| [Symbol] | [Symbol] | G.S. CONDUIT IN TRENCH OR PUSHED |
| [Symbol] | [Symbol] | PEDESTRIAN DISTRIBUTION DETECTOR |
| [Symbol] | [Symbol] | DETECTOR LOOP |
| [Symbol] | [Symbol] | EMERGENCY VEHICLE SYSTEM DETECTOR |
| [Symbol] | [Symbol] | CONFIRMATION BEACON |
| [Symbol] | [Symbol] | COMMON TRENCH |
| [Symbol] | [Symbol] | UNIT DUCT |

*** R - REMOVE & REPLACE SIGNAL HEAD, PEDESTRIAN HEAD, AND/OR PEDESTRIAN PUSH-BUTTON.**

*** P - PROPOSED PEDESTRIAN HEAD, PEDESTRIAN PUSH-BUTTON, AND/OR UPS FOR EXISTING CONTROLLER.**

*** INDICATES WORK FOR CONTRACT 60R33**

* NOTE: ALL DIMENSIONS IN METERS UNLESS OTHERWISE NOTED

| | | |
|-----------------------------|---------|---------------------------------------|
| RWA | 08/2011 | ILLINOIS DEPARTMENT OF TRANSPORTATION |
| TRAFFIC SIGNAL INSTALLATION | | |
| ILLINOIS 64 & 7TH STREET | | |
| NAME | DATE | SCALE: 1=250' |
| REVISIONS | | DATE: 3-10-00 |
| | | DRAWN BY: AMS |
| | | CHECKED BY: DMH |

POSTED SPEED LIMIT

ILLINOIS 64 ----- 30 MPH (50k+1/4)
 SEVENTH STREET ----- 30 MPH (50k+1/4)