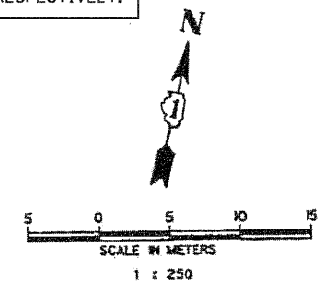


TRAFFIC SIGNAL LEGEND

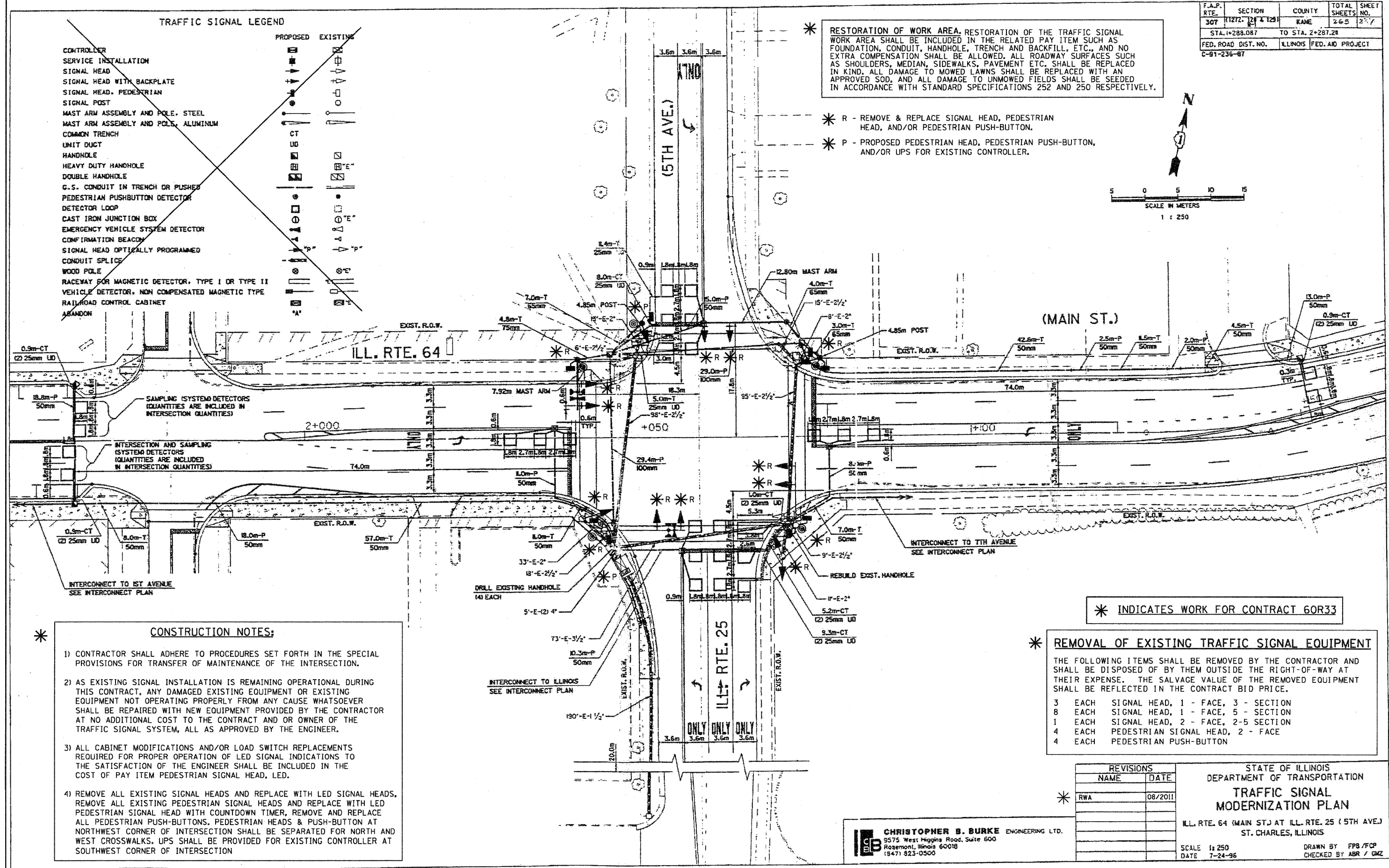
	PROPOSED	EXISTING
CONTROLLER	[Symbol]	[Symbol]
SERVICE INSTALLATION	[Symbol]	[Symbol]
SIGNAL HEAD	[Symbol]	[Symbol]
SIGNAL HEAD WITH BACKPLATE	[Symbol]	[Symbol]
SIGNAL HEAD, PEDESTRIAN	[Symbol]	[Symbol]
SIGNAL POST	[Symbol]	[Symbol]
MAST ARM ASSEMBLY AND POLE, STEEL	[Symbol]	[Symbol]
MAST ARM ASSEMBLY AND POLE, ALUMINUM	[Symbol]	[Symbol]
COMMON TRENCH	[Symbol]	[Symbol]
UNIT DUCT	[Symbol]	[Symbol]
HANDHOLE	[Symbol]	[Symbol]
HEAVY DUTY HANDHOLE	[Symbol]	[Symbol]
DOUBLE HANDHOLE	[Symbol]	[Symbol]
C.S. CONDUIT IN TRENCH OR PUSHED	[Symbol]	[Symbol]
PEDESTRIAN PUSHBUTTON DETECTOR	[Symbol]	[Symbol]
DETECTOR LOOP	[Symbol]	[Symbol]
CAST IRON JUNCTION BOX	[Symbol]	[Symbol]
EMERGENCY VEHICLE SYSTEM DETECTOR	[Symbol]	[Symbol]
CONFIRMATION BEACON	[Symbol]	[Symbol]
SIGNAL HEAD OPTICALLY PROGRAMMED	[Symbol]	[Symbol]
CONDUIT SPLICE	[Symbol]	[Symbol]
WOOD POLE	[Symbol]	[Symbol]
RACEWAY FOR MAGNETIC DETECTOR, TYPE I OR TYPE II	[Symbol]	[Symbol]
VEHICLE DETECTOR, NON COMPENSATED MAGNETIC TYPE	[Symbol]	[Symbol]
RAILROAD CONTROL CABINET	[Symbol]	[Symbol]
ABANDON	[Symbol]	[Symbol]

* RESTORATION OF WORK AREA. RESTORATION OF THE TRAFFIC SIGNAL WORK AREA SHALL BE INCLUDED IN THE RELATED PAY ITEM SUCH AS FOUNDATION, CONDUIT, HANDHOLE, TRENCH AND BACKFILL, ETC., AND NO EXTRA COMPENSATION SHALL BE ALLOWED. ALL ROADWAY SURFACES SUCH AS SHOULDERS, MEDIAN, SIDEWALKS, PAVEMENT ETC. SHALL BE REPLACED IN KIND. ALL DAMAGE TO MOWED LAWNS SHALL BE REPLACED WITH AN APPROVED SOD, AND ALL DAMAGE TO UNMOWED FIELDS SHALL BE SEEDED IN ACCORDANCE WITH STANDARD SPECIFICATIONS 252 AND 250 RESPECTIVELY.

- * R - REMOVE & REPLACE SIGNAL HEAD, PEDESTRIAN HEAD, AND/OR PEDESTRIAN PUSH-BUTTON.
- * P - PROPOSED PEDESTRIAN HEAD, PEDESTRIAN PUSH-BUTTON, AND/OR UPS FOR EXISTING CONTROLLER.



F.A.P. RTE.	SECTION	COUNTY	TOTAL SHEETS	SHEET NO.
307	11272-124-1251	KANE	265	237
STA. 1+288.087		TO STA. 2+287.28		
FED. ROAD DIST. NO.		ILLINOIS	FED. AID PROJECT	
C-91-236-87				



- * **CONSTRUCTION NOTES:**
- 1) CONTRACTOR SHALL ADHERE TO PROCEDURES SET FORTH IN THE SPECIAL PROVISIONS FOR TRANSFER OF MAINTENANCE OF THE INTERSECTION.
 - 2) AS EXISTING SIGNAL INSTALLATION IS REMAINING OPERATIONAL DURING THIS CONTRACT, ANY DAMAGED EXISTING EQUIPMENT OR EXISTING EQUIPMENT NOT OPERATING PROPERLY FROM ANY CAUSE WHATSOEVER SHALL BE REPAIRED WITH NEW EQUIPMENT PROVIDED BY THE CONTRACTOR AT NO ADDITIONAL COST TO THE CONTRACT AND OR OWNER OF THE TRAFFIC SIGNAL SYSTEM, ALL AS APPROVED BY THE ENGINEER.
 - 3) ALL CABINET MODIFICATIONS AND/OR LOAD SWITCH REPLACEMENTS REQUIRED FOR PROPER OPERATION OF LED SIGNAL INDICATIONS TO THE SATISFACTION OF THE ENGINEER SHALL BE INCLUDED IN THE COST OF PAY ITEM PEDESTRIAN SIGNAL HEAD, LED.
 - 4) REMOVE ALL EXISTING SIGNAL HEADS AND REPLACE WITH LED SIGNAL HEADS, REMOVE ALL EXISTING PEDESTRIAN SIGNAL HEADS AND REPLACE WITH LED PEDESTRIAN SIGNAL HEAD WITH COUNTDOWN TIMER, REMOVE AND REPLACE ALL PEDESTRIAN PUSH-BUTTONS. PEDESTRIAN HEADS & PUSH-BUTTON AT NORTHWEST CORNER OF INTERSECTION SHALL BE SEPARATED FOR NORTH AND WEST CROSSWALKS. UPS SHALL BE PROVIDED FOR EXISTING CONTROLLER AT SOUTHWEST CORNER OF INTERSECTION

* INDICATES WORK FOR CONTRACT 60R33

- * **REMOVAL OF EXISTING TRAFFIC SIGNAL EQUIPMENT**
- THE FOLLOWING ITEMS SHALL BE REMOVED BY THE CONTRACTOR AND SHALL BE DISPOSED OF BY THEM OUTSIDE THE RIGHT-OF-WAY AT THEIR EXPENSE. THE SALVAGE VALUE OF THE REMOVED EQUIPMENT SHALL BE REFLECTED IN THE CONTRACT BID PRICE.
- | | | |
|---|------|------------------------------------|
| 3 | EACH | SIGNAL HEAD, 1 - FACE, 3 - SECTION |
| 8 | EACH | SIGNAL HEAD, 1 - FACE, 5 - SECTION |
| 1 | EACH | SIGNAL HEAD, 2 - FACE, 2-5 SECTION |
| 4 | EACH | PEDESTRIAN SIGNAL HEAD, 2 - FACE |
| 4 | EACH | PEDESTRIAN PUSH-BUTTON |

* **REVISIONS**

NAME	DATE
RWA	08/20/11

STATE OF ILLINOIS
 DEPARTMENT OF TRANSPORTATION
**TRAFFIC SIGNAL
 MODERNIZATION PLAN**
 ILL. RTE. 64 (MAIN ST.) AT ILL. RTE. 25 (5TH AVE.)
 ST. CHARLES, ILLINOIS

SCALE: 1:250
 DATE: 7-24-96

DRAWN BY: FPS / FCP
 CHECKED BY: ABR / GMZ

CB CHRISTOPHER B. BURKE ENGINEERING LTD.
 9575 West Higgins Road, Suite 600
 Rosemont, Illinois 60018
 (847) 823-0500