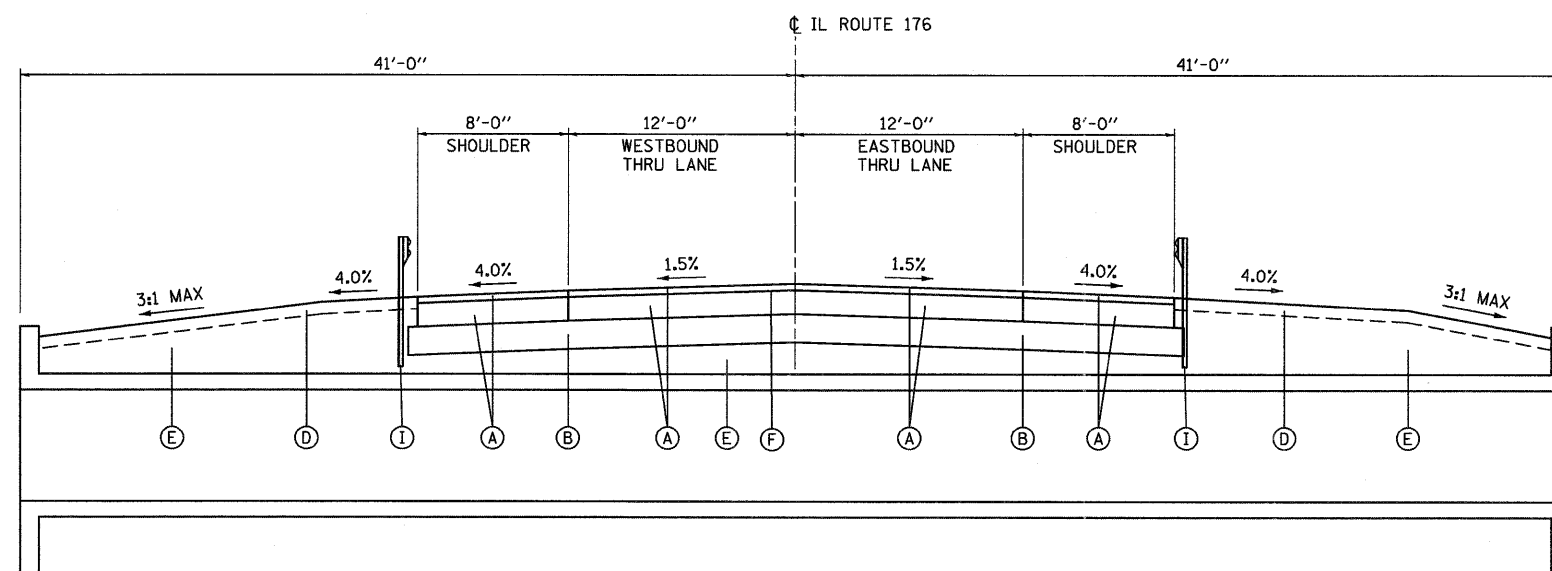


PROPOSED TYPICAL SECTION AT CULVERT

STA. 45 + 00.00



PROPOSED TYPICAL SECTION AT CULVERT

STA. 54 + 00.00

PROPOSED LEGEND

- (A) HOT-MIX ASPHALT PAVEMENT (FULL DEPTH) 13"
POLYMERIZED HOT-MIX ASPHALT SURFACE COURSE, MIX "F", N90 (2")
POLYMERIZED HOT-MIX ASPHALT BINDER COURSE, IL-19.0, N90 (1")
- (B) AGGREGATE SUBGRADE, 12"
- (C) AGGREGATE SHOULDERS, TYPE B 8"
- (D) PARKWAY RESTORATION:
EROSION CONTROL BLANKET SEEDING, CLASS 2A OR CLASS 4 (SEE PLANS)
TOPSOIL FURNISH AND PLACE, 4"
- (E) POROUS GRANULAR EMBANKMENT, SUBGRADE
- (F) BITUMINOUS MATERIALS (PRIME COAT)
- (G) AGGREGATE (PRIME COAT)
- (H) FILL/EMBANKMENT/FURNISHED EXCAVATION
- (I) STEEL PLATE BEAM GUARDRAIL OR
STEEL PLATE BEAM GUARDRAIL ATTACHED TO STRUCTURE

NOTE:
1. SEE STRUCTURAL PLAN FOR ADDITIONAL INFORMATION.
2. POROUS GRANULAR EMBANKMENT, SUBGRADE SHALL BE PLACED OVER THE ENTIRE LIMITS OF THE 3-SIDED STRUCTURES.

FILE NAME =
...\\D162187-sht-typool.02.dgn



DESIGNED ADW
DRAWN GEW
CHECKED RJD
DATE 9/14/2011

REVISED -
REVISED -
REVISED -
REVISED -

STATE OF ILLINOIS
DEPARTMENT OF TRANSPORTATION

IL ROUTE 176 (SLOCUM LAKE ROAD) OVER BANGS LAKE DRAINAGE DITCH
TYPICAL SECTIONS

SCALE: N.T.S. SHEET NO. 2 OF 2 SHEETS STA. TO STA.

F.A.P. RTE.	SECTION	COUNTY	TOTAL SHEETS	SHEET NO.
335	145 X-T	LAKE	80	6
CONTRACT NO. 62187			ILLINOIS FED. AID PROJECT	