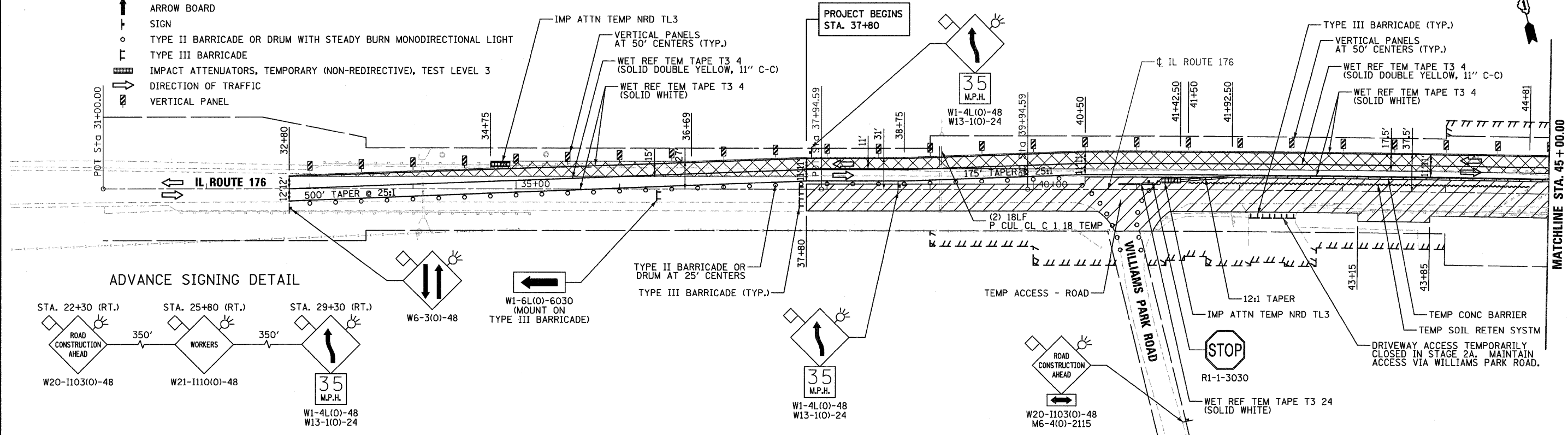
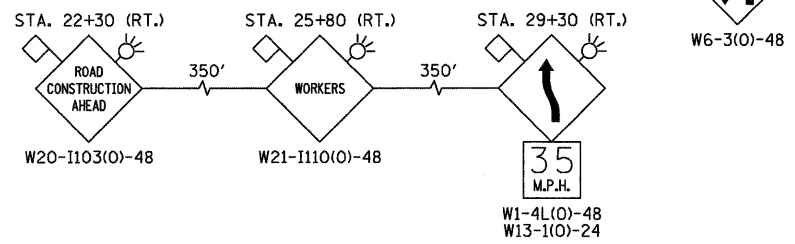


LEGEND:

- WORK AREA
- TEMPORARY PAVEMENT
- TEMPORARY CONCRETE BARRIER
- ARROW BOARD
- SIGN
- TYPE II BARRICADE OR DRUM WITH STEADY BURN MONODIRECTIONAL LIGHT
- TYPE III BARRICADE
- IMPACT ATTENUATORS, TEMPORARY (NON-REDIRECTIVE), TEST LEVEL 3
- DIRECTION OF TRAFFIC
- VERTICAL PANEL



ADVANCE SIGNING DETAIL

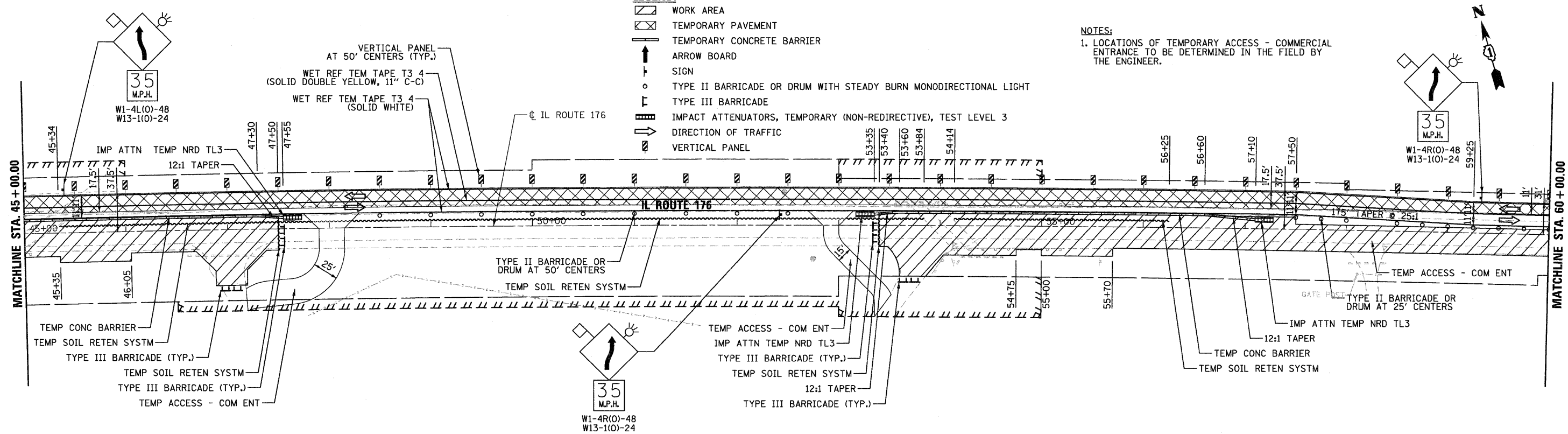


LEGEND:

- WORK AREA
- TEMPORARY PAVEMENT
- TEMPORARY CONCRETE BARRIER
- ARROW BOARD
- SIGN
- TYPE II BARRICADE OR DRUM WITH STEADY BURN MONODIRECTIONAL LIGHT
- TYPE III BARRICADE
- IMPACT ATTENUATORS, TEMPORARY (NON-REDIRECTIVE), TEST LEVEL 3
- DIRECTION OF TRAFFIC
- VERTICAL PANEL

NOTES:

1. LOCATIONS OF TEMPORARY ACCESS - COMMERCIAL ENTRANCE TO BE DETERMINED IN THE FIELD BY THE ENGINEER.



FILE NAME = ...\\D162187-aht-staging2A-01.dgn



DESIGNED	ADW	REVISED	-
DRAWN	GEW	REVISED	-
CHECKED	RJD	REVISED	-
DATE	9/14/2011	REVISED	-

STATE OF ILLINOIS
DEPARTMENT OF TRANSPORTATION

IL ROUTE 176 (SLOCUM LAKE ROAD) OVER BANGS LAKE DRAINAGE DITCH
MAINTENANCE OF TRAFFIC PLAN
STAGE 2A
SCALE: 1"=50' SHEET NO. 5 OF 8 SHEETS STA. 32+80 TO STA. 60+00

F.A.P. RTE.	SECTION	COUNTY	TOTAL SHEETS	SHEET NO.
335	145 X-T	LAKE	80	16
CONTRACT NO. 62187				
ILLINOIS FED. AID PROJECT				