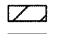



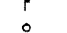
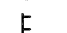
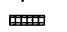



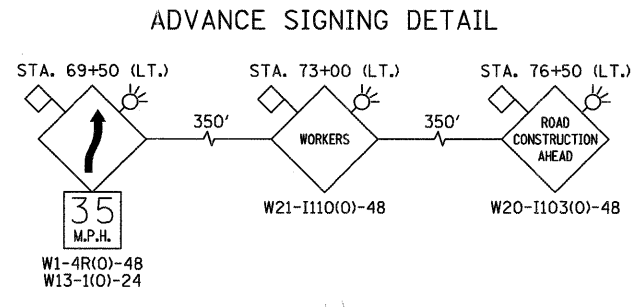
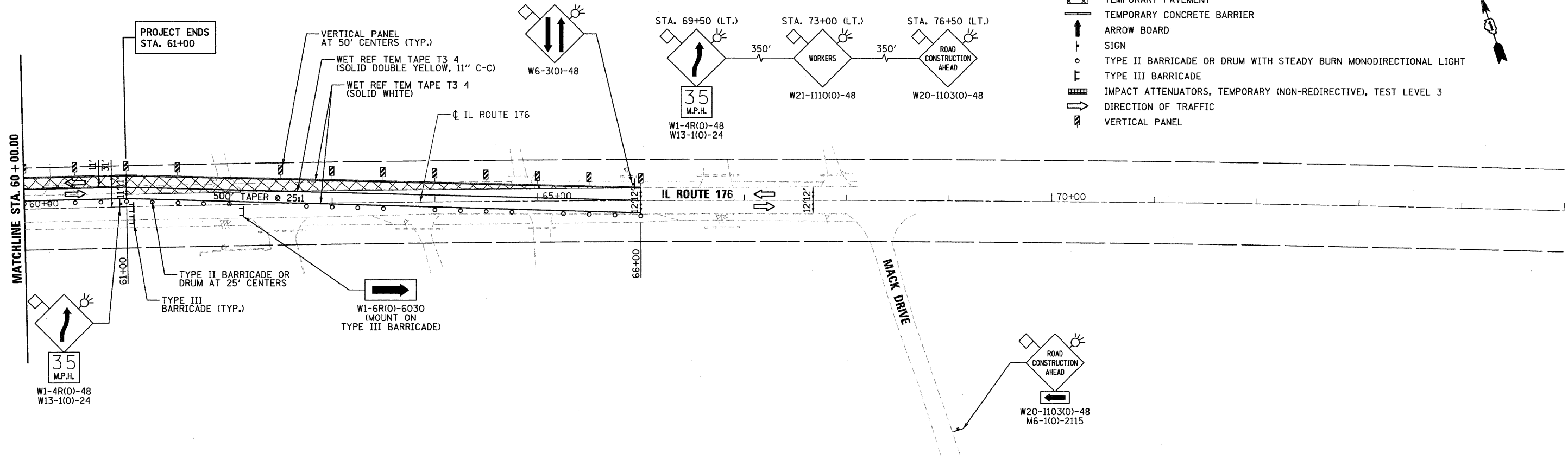


LEGEND:

-  WORK AREA
-  TEMPORARY PAVEMENT
-  TEMPORARY CONCRETE BARRIER
-  ARROW BOARD
-  SIGN
-  TYPE II BARRICADE OR DRUM WITH STEADY BURN MONODIRECTIONAL LIGHT
-  TYPE III BARRICADE
-  IMPACT ATTENUATORS, TEMPORARY (NON-REDIRECTIVE), TEST LEVEL 3
-  DIRECTION OF TRAFFIC
-  VERTICAL PANEL



ADVANCE SIGNING DETAIL



FILE NAME =
...\\D162187-sht-staging28_82.dgn



DESIGNED	ADW	REVISED	-
DRAWN	GEW	REVISED	-
CHECKED	RJD	REVISED	-
DATE	9/14/2011	REVISED	-

**STATE OF ILLINOIS
DEPARTMENT OF TRANSPORTATION**

**IL ROUTE 176 (SLOCUM LAKE ROAD) OVER BANGS LAKE DRAINAGE DITCH
MAINTENANCE OF TRAFFIC PLAN
STAGE 2B**

F.A.P. RTE.	SECTION	COUNTY	TOTAL SHEETS	SHEET NO.
335	145 X-T	LAKE	80	19
			CONTRACT NO. 62187	
ILLINOIS FED. AID PROJECT				

SCALE: 1"=50' SHEET NO. 8 OF 8 SHEETS STA. 60+00 TO STA. 66+00