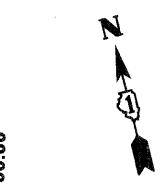
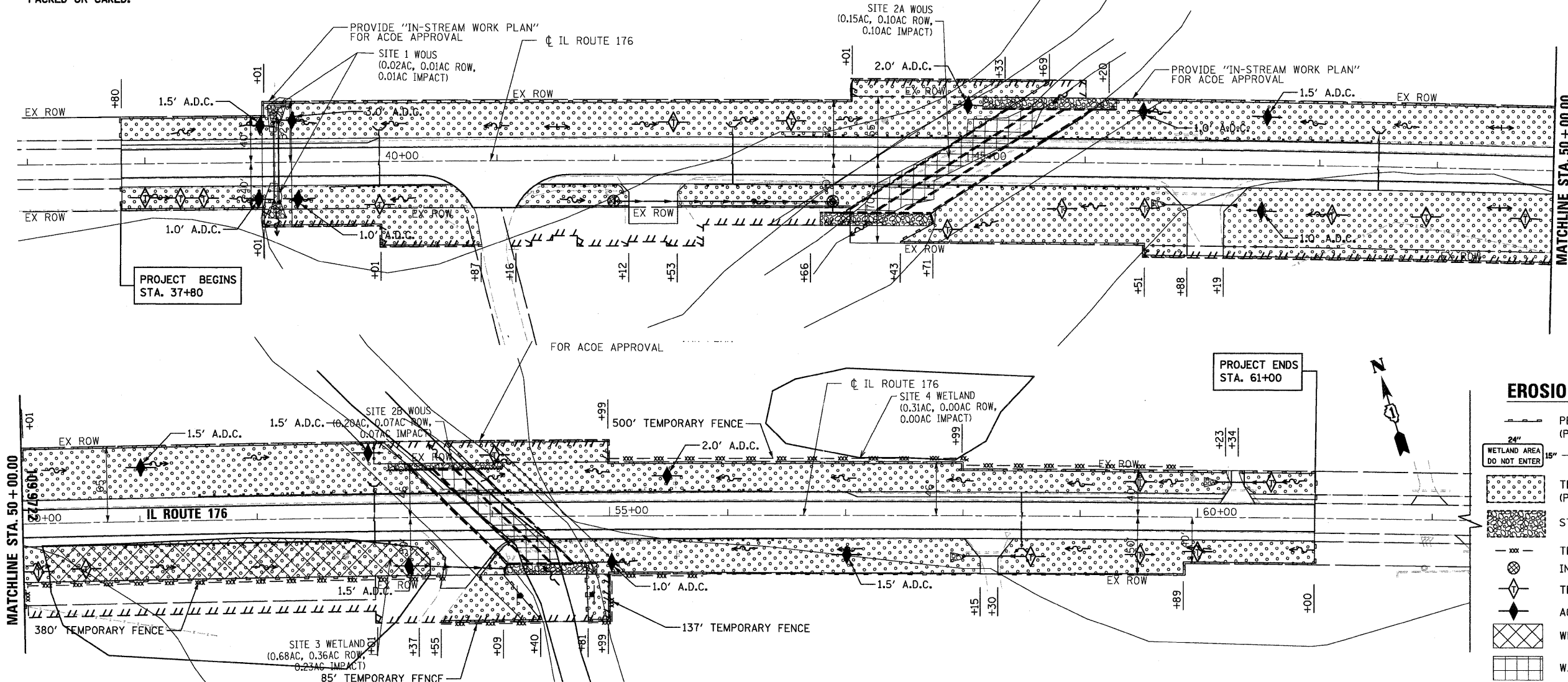


EROSION CONTROL NOTES

1. THE EROSION CONTROL MEASURES INDICATED ON THE PLANS ARE THE MINIMUM REQUIREMENTS. ADDITIONAL MEASURES MAY BE REQUIRED, AS DIRECTED BY THE ENGINEER.
2. THE CONTRACTOR SHALL TAKE ALL PRECAUTIONS TO PREVENT POLLUTION OF STORM WATER AND SHALL FOLLOW IEPA & IDOT CONSTRUCTION MEMORANDUM NO. 06-60.
3. SOIL DISTURBANCE SHALL BE CONDUCTED IN SUCH A MANNER AS TO MINIMIZE EROSION. SOIL STABILIZATION MEASURES SHALL CONSIDER THE TIME OF YEAR, SITE CONDITIONS AND THE USE OF TEMPORARY OR PERMANENT MEASURES.
4. THE MAINTENANCE AND REPAIR OR REPLACEMENT OF EROSION CONTROL ITEMS, WHEN DIRECTED BY THE ENGINEER, WILL NOT BE PAID FOR SEPARATELY, BUT SHALL BE INCLUDED IN THE COST OF THE ASSOCIATED PAY ITEMS.
5. ALL STORM SEWER FACILITIES THAT ARE OR WILL BE FUNCTIONING DURING CONSTRUCTION SHALL BE PROTECTED, FILTERED OR OTHERWISE TREATED TO REMOVE SEDIMENT. MUD AND SEDIMENT DEPOSITS SHALL BE REMOVED FROM THE ROADWAY AT THE END OF EACH WORK DAY BY SHOVELING AND/OR SWEEPING.
6. INLET FILTERS SHALL BE PLACED ON ALL CATCH BASINS, INLETS, AND MANHOLES WITH OPEN GRATES.
7. THE CONTRACTOR SHALL APPLY TEMPORARY EROSION CONTROL SEEDING TO ALL ERODIBLE BARE EARTH AREAS EVERY 7 DAYS AFTER THE EARTH IS EXPOSED. APPLICATION RATE USED: 100 LB/ACRE
8. BROADCASTING OF THE SEED BY MACHINE, HAND METHODS, HYDRAULIC SEEDING OR OTHER METHODS APPROVED BY THE ENGINEER WILL BE ALLOWED FOR TEMPORARY EROSION CONTROL SEEDING.
9. TOPSOIL AND FERTILIZER NUTRIENTS ARE NOT REQUIRED FOR TEMPORARY EROSION CONTROL SEEDING.
10. SEED BED PREPARATION WILL NOT BE REQUIRED FOR TEMPORARY EROSION CONTROL SEEDING IF THE SOIL IS IN A LOOSE CONDITION. LIGHT DISKING SHALL BE DONE IF THE SOIL IS HARD PACKED OR CAKED.

11. MULCH WILL NOT BE REQUIRED TO BE PLACED ON TEMPORARY EROSION CONTROL SEEDING THAT HAS BEEN PLACED ON AREAS WITH SLOPES FLATTER THAN 1:3 (V:H) THAT ARE TEMPORARY SEEDED BEFORE NOVEMBER 2.
12. EROSION CONTROL BLANKET SHALL BE PLACED IN ACCORDANCE WITH THE REQUIREMENT OF THE STANDARD SPECIFICATIONS AFTER TEMPORARY EROSION CONTROL SEEDING HAS BEEN COMPLETED ON AREAS WITH SLOPES STEEPER THAN 1:3 (V:H) THAT ARE TEMPORARY SEEDED BEFORE NOVEMBER 2.
13. EROSION CONTROL BLANKET SHALL BE PLACED IN ACCORDANCE WITH THE REQUIREMENTS OF THE STANDARD SPECIFICATIONS AFTER TEMPORARY EROSION CONTROL SEEDING HAS BEEN COMPLETED ON ALL AREAS THAT ARE TEMPORARY SEEDED ON OR AFTER NOVEMBER 2.
14. ALL TEMPORARY INFORMATION SIGNS, PERIMETER EROSION BARRIER AND TEMPORARY FENCE SHALL BE INSTALLED WITHIN THE TEMPORARY EASEMENT, PROPOSED RIGHT-OF-WAY OR EXISTING RIGHT-OF-WAY.
15. EROSION CONTROL ITEMS ARE CONSIDERED TO BE HIGH PRIORITY ITEMS ON THIS CONTRACT. THE ENGINEER WILL IMPLEMENT ALL PROVISIONS OF THE SPECIFICATION NECESSARY TO ASSURE THAT EROSION CONTROL ITEMS ARE CONSTRUCTED AND MAINTAINED IN A TIMELY WAY. ALL EROSION CONTROL MEASURES SHALL BE INSTALLED PRIOR TO BEGINNING ANY CONSTRUCTION ACTIVITIES WHICH WILL POTENTIALLY CREATE ERODIBLE CONDITIONS.
16. THE CONTRACTOR SHALL INSTALL PERIMETER EROSION BARRIER PRIOR TO STRIPPING VEGETATION.
17. TEMPORARY DITCH CHECKS AND INLET FILTERS SHALL BE INSTALLED IMMEDIATELY AFTER DISTURBANCE.
18. THE CONTRACTOR SHALL MAINTAIN ALL EROSION CONTROL DEVICES AT ALL TIMES. ALL EROSION AND SEDIMENT CONTROL MEASURES WILL BE INSPECTED BY QUALIFIED PERSONNEL AT LEAST ONCE EVERY SEVEN CALENDAR DAYS AND WITHIN 24 HOURS OF THE END OF A STORM THAT IS 0.5 INCHES OR GREATER OR EQUIVALENT SNOWFALL.
19. THE IDOT EROSION AND SEDIMENT CONTROL FIELD GUIDE FOR CONSTRUCTION INSPECTION AND THE ILLINOIS URBAN MANUAL, PRACTICE STANDARD, DEWATERING CODE 813 SHALL BE FOLLOWED WHEN DEWATERING THE CONSTRUCTION SITE.

20. ALL DITCHES THAT RECEIVE TEMPORARY EROSION CONTROL SEEDING SHALL ALSO RECEIVE EROSION CONTROL BLANKET A DISTANCE 1.0' HIGHER THAN BOTTOM OF THE DITCH..
21. AS SHOWN ON THE PLANS, THE CONTRACTOR SHALL INSTALL TEMPORARY INFORMATION SIGNING (FOR WETLAND AREAS) AT EACH WETLAND AREA. THE SIGN(S) SHALL BE ATTACHED TO THE STAKES BY A METHOD APPROVED BY THE ENGINEER. THE SIGN(S) WILL BE PROVIDED BY THE DEPARTMENT AND SHALL BE PICKED UP BY THE CONTRACTOR FROM THE DISTRICT ONE ROADSIDE DEVELOPMENT UNIT (847) 705-4171. THE COST OF PICKING UP, ATTACHING THE SIGNS TO THE TEMPORARY FENCE STAKES AND RETURNING THE SIGNS WILL NOT BE PAID FOR SEPARATELY, BUT SHALL BE INCLUDED IN THE CONTRACT UNIT PRICE FOR TEMPORARY FENCE.
22. THE CONTRACTOR WILL PROVIDE AN IN-STREAM WORK PLAN FOR REVIEW BY THE RE, AND WRITTEN APPROVAL BY THE USACE, PRIOR TO STARTING ANY WORK WITHIN THE IN-STREAM WORK AREA. THE 2-YEAR FLOW RATE FOR BANGS LAKE DRAINAGE DITCH IS 340 CFS.
23. THE USE OF HAY OR STRAW BALES FOR ANY EROSION AND SEDIMENT CONTROL MEASURES IS NOT PERMITTED.
24. J-HOOKS PER IDOT STANDARD 280001 SHALL BE INSTALLED DURING THE INSTALLATION OF THE PERIMETER EROSION BARRIER.
25. PERMANENT SEEDING AND EROSION CONTROL BLANKET SHALL BE INSTALLED ON ALL DISTURBED AREAS IMMEDIATELY FOLLOWING FINAL GRADING
26. STOCKPILES OF SOIL AND OTHER BUILDING MATERIALS TO REMAIN IN PLACE MORE THAN (3) DAYS SHALL BE FURNISHED WITH EROSION AND SEDIMENT CONTROL MEASURES (I.E. PERIMETER EROSION BARRIER). STOCKPILES TO REMAIN IN PLACE FOR 7 DAYS OR MORE SHALL RECEIVE TEMPORARY SEEDING.
27. STABILIZED CONSTRUCTION EXITS SHALL BE INSTALLED TO REDUCE THE AMOUNT OF SEDIMENT TRANSPORTED ONTO PAVED ROADS BY CONSTRUCTION EQUIPMENT. THIS WORK SHALL BE CONSIDERED INCIDENTAL TO THE CONTRACT.



NOTE:
FLOODWAY AND FLOODPLAIN BOUNDARIES
SCALED FROM FIRM PANEL 17097C0118G
EFFECTIVE DATE: 11/16/2006

	PERIMETER EROSION BARRIER (PER IDOT STD. 280001 (CURRENT REVISION))
	TEMPORARY INFORMATION SIGNING (FOR WETLAND AREAS)
	TEMPORARY EROSION CONTROL SEEDING (PER NOTES 11, 12, 13 AND 20)
	STONE RIPRAP CL A4 (TYP)
	TEMPORARY FENCE
	INLET FILTER
	TEMPORARY DITCH CHECK
	AGGREGATE DITCH CHECK (A.D.C.)
	WETLAND IMPACTS
	WATERS OF THE U.S. IMPACTS

FILE NAME =
...D0162187-sht-eros_01.dgn



DESIGNED	ADW	REVISED	-
DRAWN	GEW	REVISED	-
CHECKED	RJD	REVISED	-
DATE	9/14/2011	REVISED	-

STATE OF ILLINOIS
DEPARTMENT OF TRANSPORTATION

IL ROUTE 176 (SLOCUM LAKE ROAD) OVER BANGS LAKE DRAINAGE DITCH		F.A.P. RTE.	SECTION	COUNTY	TOTAL SHEETS	SHEET NO.
EROSION AND SEDIMENT CONTROL PLAN		335	145 X-T	LAKE	80	20
SCALE: 1"=50'	SHEET NO. 1 OF 1 SHEETS	STA. 37+80 TO STA. 61+00	CONTRACT NO. 62187			
ILLINOIS FED. AID PROJECT						