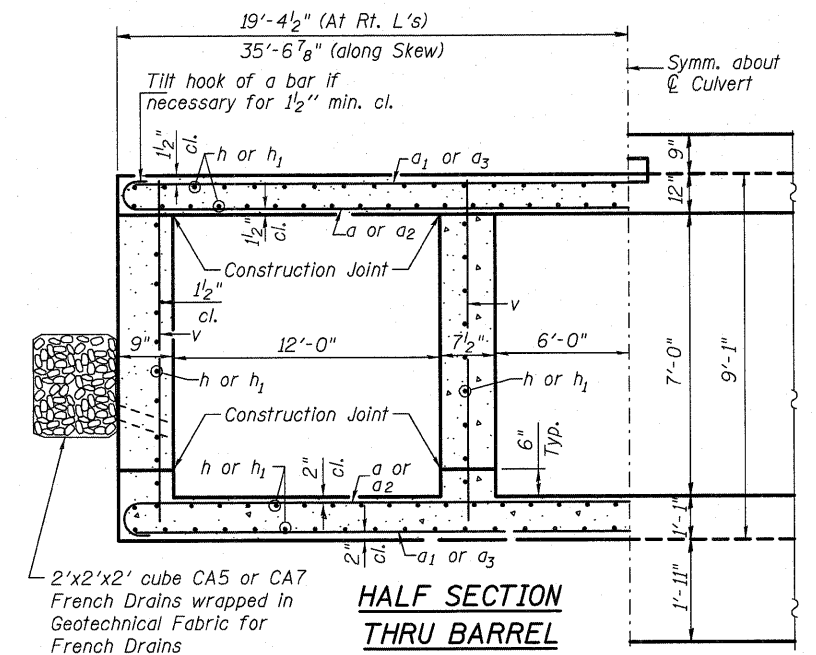
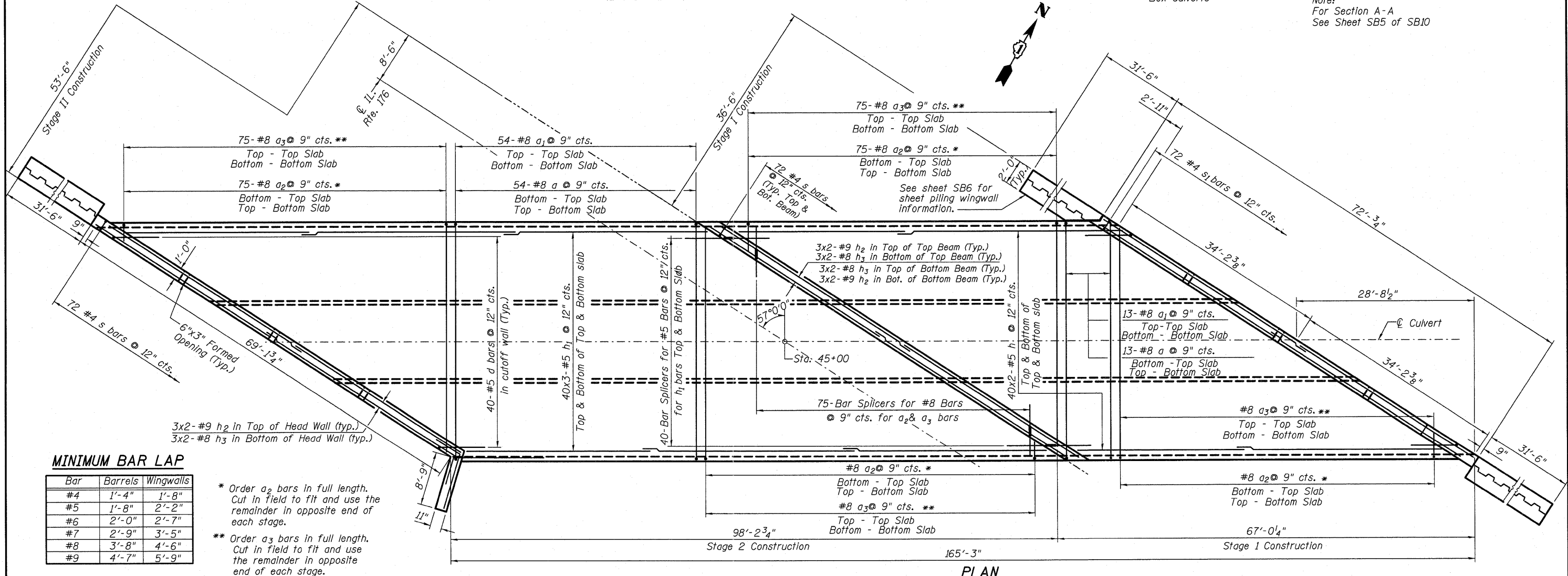


HALF ELEVATION HALF LONG SECTION
 Dimensions are at right angle to \varnothing Roadway
 (LOOKING EAST)



**HALF SECTION
 THRU BARREL**

Note:
 For Section A-A
 See Sheet SB5 of SB10



PLAN

MINIMUM BAR LAP

Bar	Barrels	Wingwalls
#4	1'-4"	1'-8"
#5	1'-8"	2'-2"
#6	2'-0"	2'-7"
#7	2'-9"	3'-5"
#8	3'-8"	4'-6"
#9	4'-7"	5'-9"

* Order a2 bars in full length. Cut in field to fit and use the remainder in opposite end of each stage.
 ** Order a3 bars in full length. Cut in field to fit and use the remainder in opposite end of each stage.



USER NAME =
 PLOT SCALE =
 PLOT DATE =

DESIGNED - JSG
 CHECKED - LRG
 DRAWN - MPS
 CHECKED - JXH

REVISED -
 REVISED -
 REVISED -
 REVISED -

STATE OF ILLINOIS
 DEPARTMENT OF TRANSPORTATION

CULVERT PLAN AND DETAILS
 STRUCTURE No. 049-0197 STA. 45+00.00
 SHEET NO. SB4 OF SB10 SHEETS

F.A.P. RTE.	SECTION	COUNTY	TOTAL SHEETS	SHEET NO.
335	145 X-T	LAKE	80	38

CONTRACT NO. 62187
 DATE: 11-30-2011 ILLINOIS FED. AID PROJECT