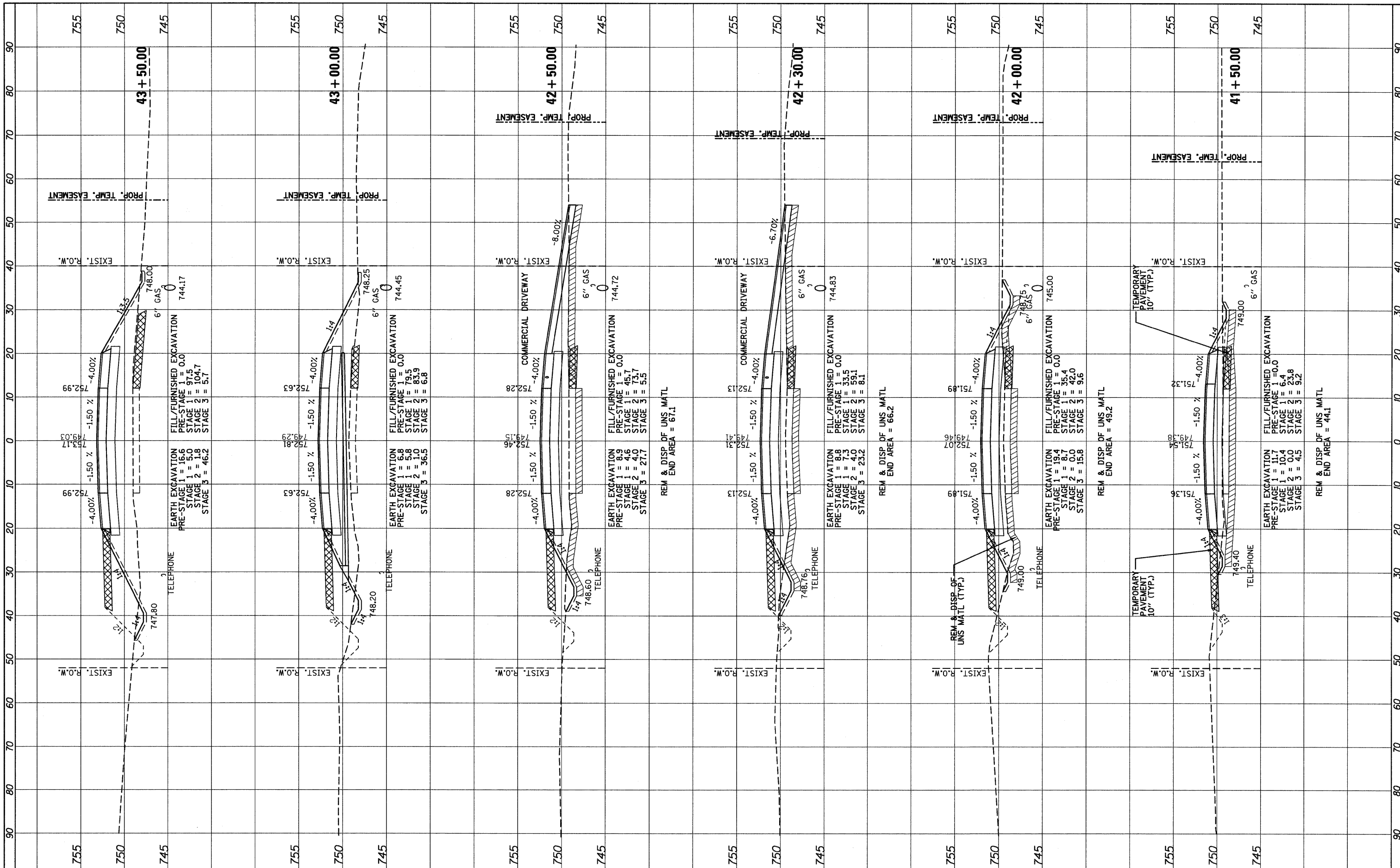


FINAL SURVEY PLOTTED TEMPLATE AREAS CHECKED NO. BY DATE

ORIGINAL SURVEY PLOTTED TEMPLATE AREAS CHECKED NO. BY DATE



FILE NAME = ...\\D162187-aht-xssht.dgn



DESIGNED - ADW
 DRAWN - GEW
 CHECKED - RJD
 DATE - 9/14/2011

REVISED -
 REVISED -
 REVISED -
 REVISED -

STATE OF ILLINOIS
 DEPARTMENT OF TRANSPORTATION

IL ROUTE 176 (SLOCUM LAKE ROAD) OVER BANGS LAKE DRAINAGE DITCH
 CROSS SECTIONS

SCALE: 1/2" = 10' (HORIZ.) 1/8" = 5' (VERT.) SHEET NO. 5 OF 16 SHEETS STA. 41+50.00 TO STA. 43+50.00

F.A.P. RTE. 335	SECTION 145 X-T	COUNTY LAKE	TOTAL SHEETS 80	SHEET NO. 69
CONTRACT NO. 62187			ILLINOIS FED. AID PROJECT	