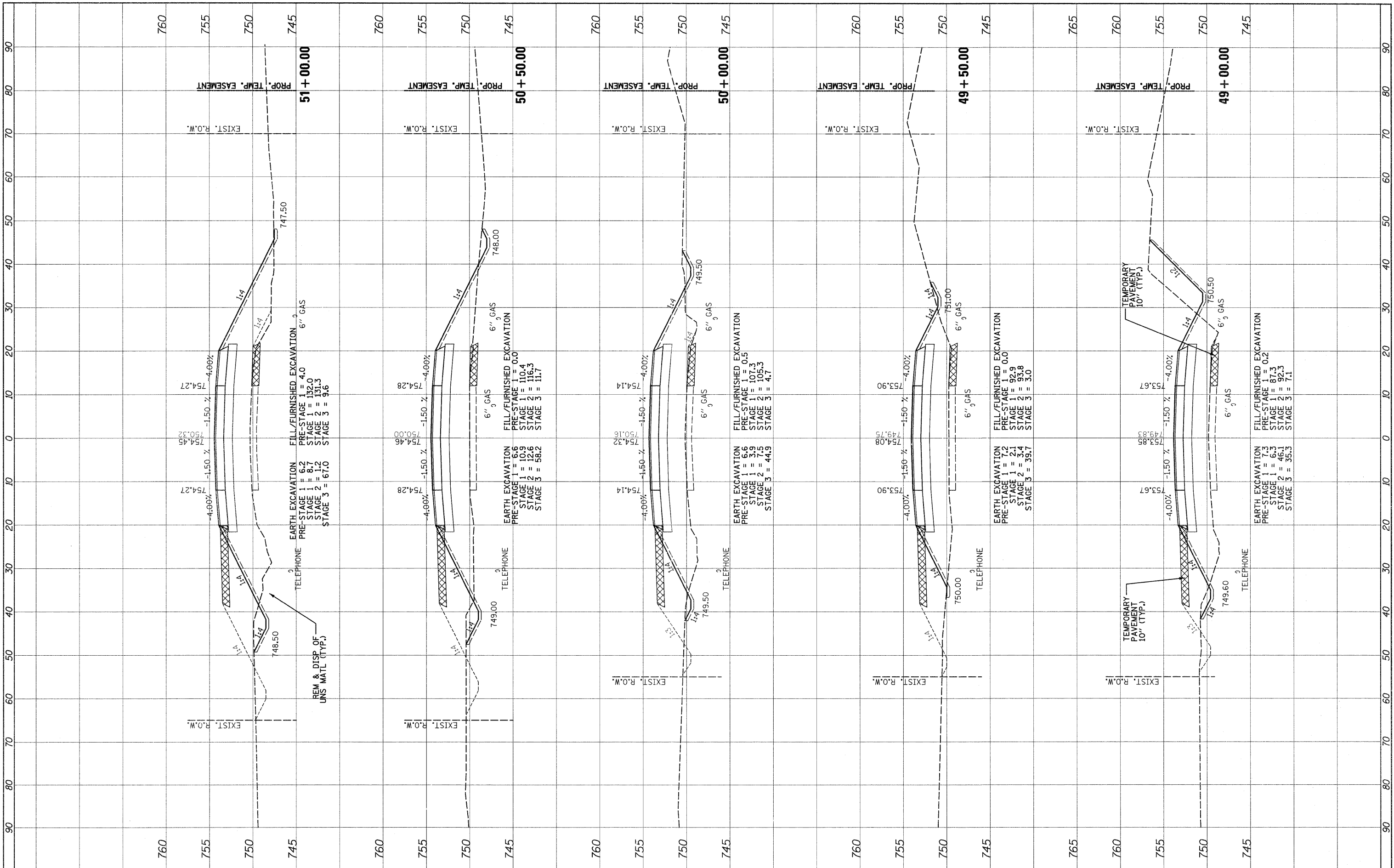


FINAL SURVEY PLOTTED DATE BY SURVEYED PLOTTED DATE BY SURVEYED PLOTTED DATE BY

ORIGINAL SURVEY PLOTTED DATE BY SURVEYED PLOTTED DATE BY SURVEYED PLOTTED DATE BY



FILE NAME =  
#FILEABBREV#



DESIGNED - ADW  
DRAWN - GEW  
CHECKED - RJD  
DATE - 9/14/2011

REVISED -  
REVISED -  
REVISED -  
REVISED -

STATE OF ILLINOIS  
DEPARTMENT OF TRANSPORTATION

IL ROUTE 176 (SLOCUM LAKE ROAD) OVER BANGS LAKE DRAINAGE DITCH  
CROSS SECTIONS  
SCALE: 1"=10' (HORIZ.)  
1/8"=8' (VERT.)  
SHEET NO. 8 OF 16 SHEETS  
STA. 49+00.00 TO STA. 51+00.00

F.A.P. RTE. 335	SECTION 145 X-T	COUNTY LAKE	TOTAL SHEETS 80	SHEET NO. 72
CONTRACT NO. 62187				
ILLINOIS FED. AID PROJECT				