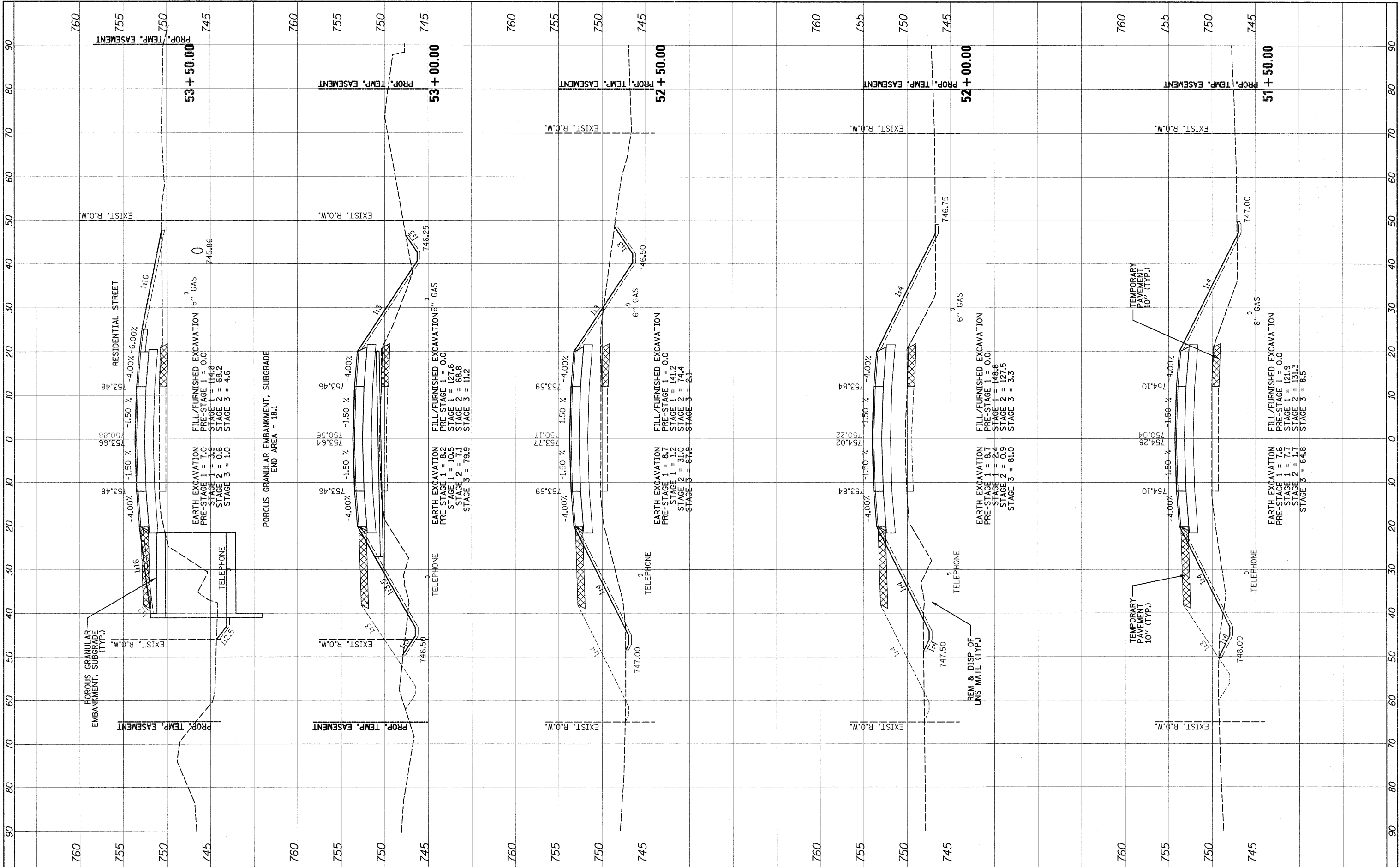


FINAL SURVEY BY DATE
 SURVEYED PLOTTED
 NOTE BOOK AREA DATE
 AREAS CHECKED

ORIGINAL SURVEY BY DATE
 SURVEYED PLOTTED
 NOTE BOOK AREA DATE
 AREAS CHECKED



FILE NAME =
 #FILEABBREV#



DESIGNED - ADW	REVISED -
DRAWN - GEW	REVISED -
CHECKED - RJD	REVISED -
DATE - 9/14/2011	REVISED -

STATE OF ILLINOIS
 DEPARTMENT OF TRANSPORTATION

IL ROUTE 176 (SLOCUM LAKE ROAD) OVER BANGS LAKE DRAINAGE DITCH
 CROSS SECTIONS
 SCALE: 1"=10' (HORIZ.)
 1"=5' (VERT.) SHEET NO. 9 OF 16 SHEETS STA. 51+50.00 TO STA. 53+50.00

F.A.P. RTE. 335	SECTION 145 X-T	COUNTY LAKE	TOTAL SHEETS 80	SHEET NO. 73
CONTRACT NO. 62187				
ILLINOIS FED. AID PROJECT				