

FINAL SURVEY PLOTTED TEMPLATE AREAS CHECKED

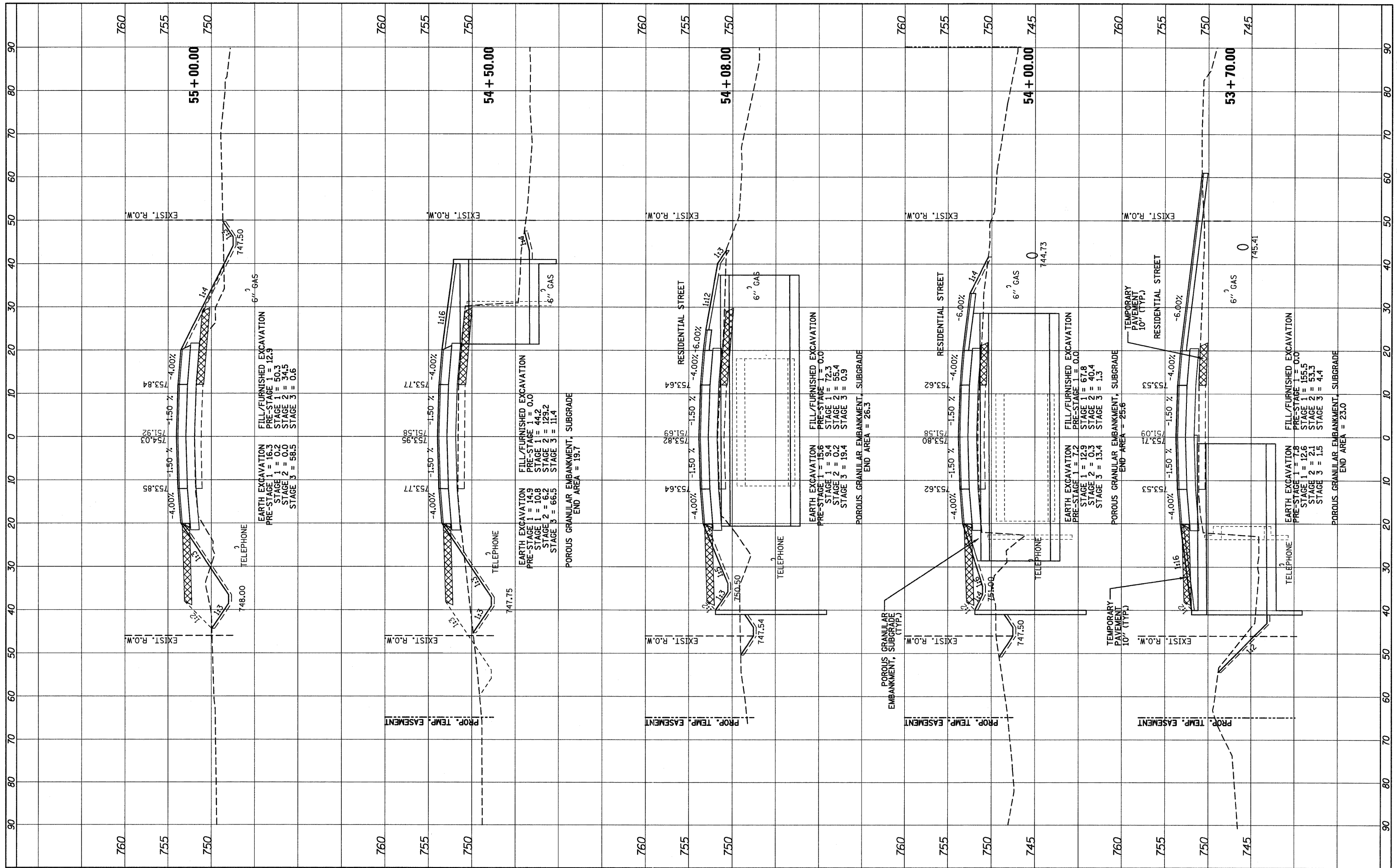
BY: \_\_\_\_\_ DATE: \_\_\_\_\_

NO. \_\_\_\_\_

ORIGINAL SURVEY PLOTTED TEMPLATE AREAS CHECKED

BY: \_\_\_\_\_ DATE: \_\_\_\_\_

NO. \_\_\_\_\_



FILE NAME = ...\\D162187-sht-xsht.dgn



DESIGNED - ADW  
 DRAWN - GEW  
 CHECKED - RJD  
 DATE - 9/14/2011

REVISED -  
 REVISED -  
 REVISED -  
 REVISED -

STATE OF ILLINOIS  
 DEPARTMENT OF TRANSPORTATION

IL ROUTE 176 (SLOCUM LAKE ROAD) OVER BANGS LAKE DRAINAGE DITCH CROSS SECTIONS

SCALE: 1" = 10' (HORIZ.)  
 1" = 5' (VERT.)

SHEET NO. 10 OF 16 SHEETS  
 STA. 53+70.00 TO STA. 55+00.00

F.A.P. RTE. 335	SECTION 145 X-T	COUNTY LAKE	TOTAL SHEETS 80	SHEET NO. 74
CONTRACT NO. 62187			ILLINOIS FED. AID PROJECT	