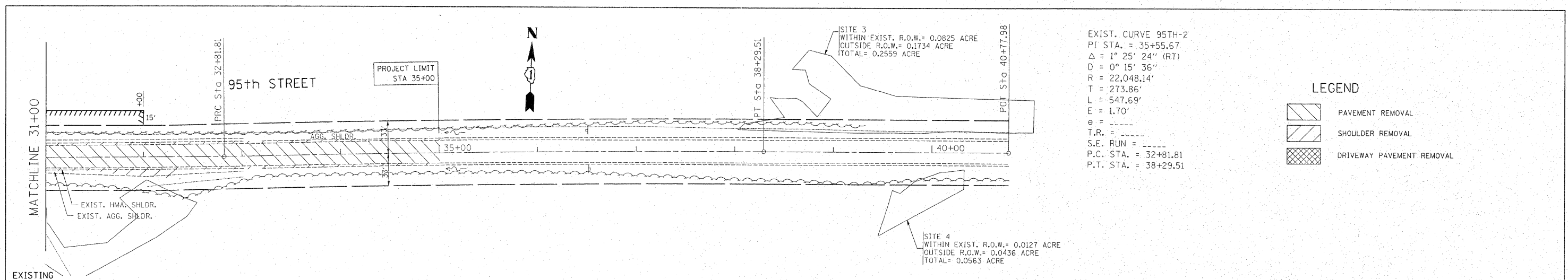


PLAN
 SURVEYED BY: _____ DATE: _____
 CHECKED BY: _____
 NOTE BOOK NO. _____
 PLOT FILE NAME: _____

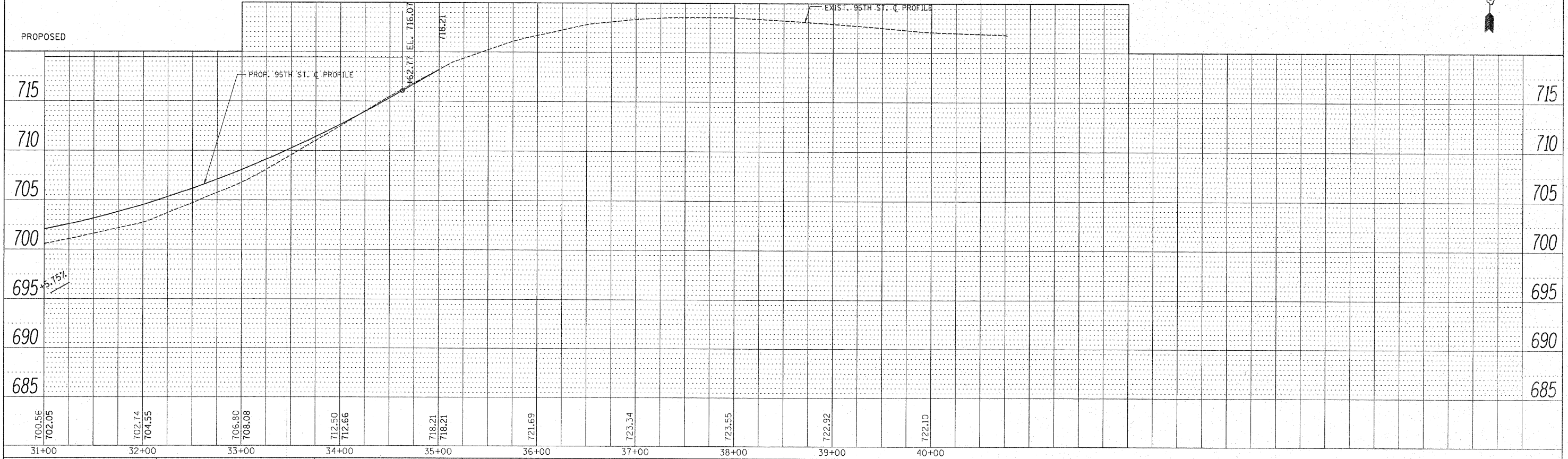
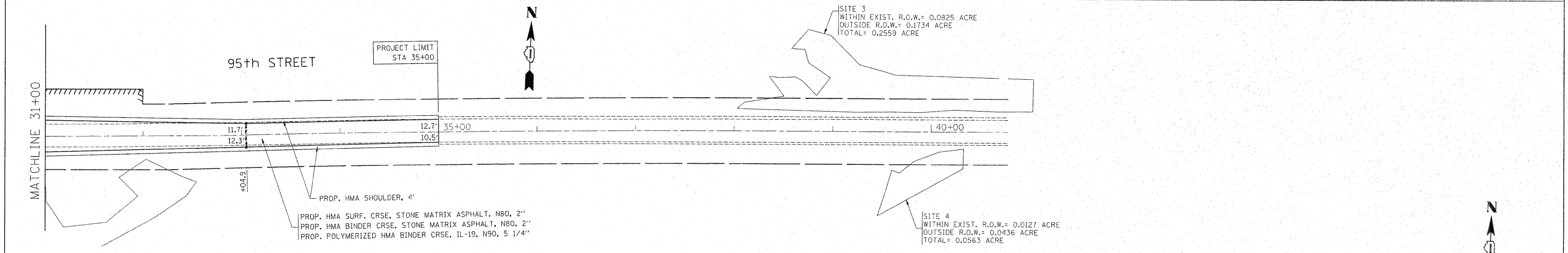
PROFILE
 SURVEYED BY: _____ DATE: _____
 CHECKED BY: _____
 NOTE BOOK NO. _____
 PLOT FILE NAME: _____



EXIST. CURVE 95TH-2
 PI STA. = 35+55.67
 $\Delta = 1^\circ 25' 24''$ (RT)
 $D = 0^\circ 15' 36''$
 $R = 22,048.14'$
 $T = 273.86'$
 $L = 547.69'$
 $E = 1.70'$
 $e = \text{---}$
 T.R. = ---
 S.E. RUN = ---
 P.C. STA. = 32+81.81
 P.T. STA. = 38+29.51

LEGEND

- PAVEMENT REMOVAL
- SHOULDER REMOVAL
- DRIVEWAY PAVEMENT REMOVAL



FILE NAME = c:\pwork\pwork\dot\steedpa\d0159937\p14449	USER NAME = steedpa	DESIGNED -	REVISED -	STATE OF ILLINOIS DEPARTMENT OF TRANSPORTATION	95th STREET @ 104th AVE. / FLAVIN ROAD EXIST. & PROP. ROADWAY PLAN		F.A.U. RTE. 1566	SECTION 29R-N-1	COUNTY COOK	TOTAL SHEETS 120	SHEET NO. 15
	PLOT SCALE = 50.768' / IN.	CHECKED -	REVISED -		SCALE:	SHEET NO. OF SHEETS	STA. TO STA.	CONTRACT NO. 62377		ILLINOIS FED. AID PROJECT	
	PLOT DATE = 2/3/2011	DATE -	REVISED -								