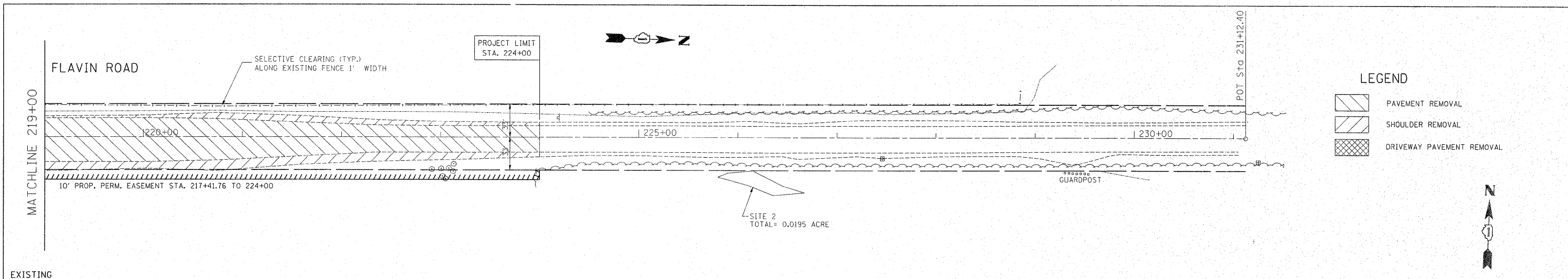


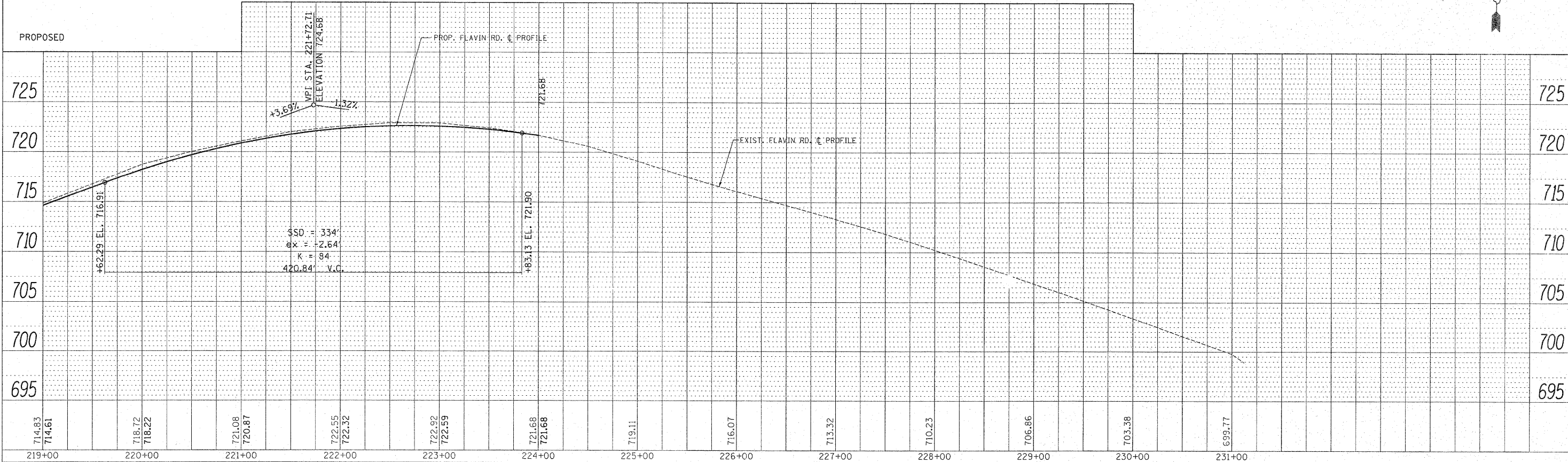
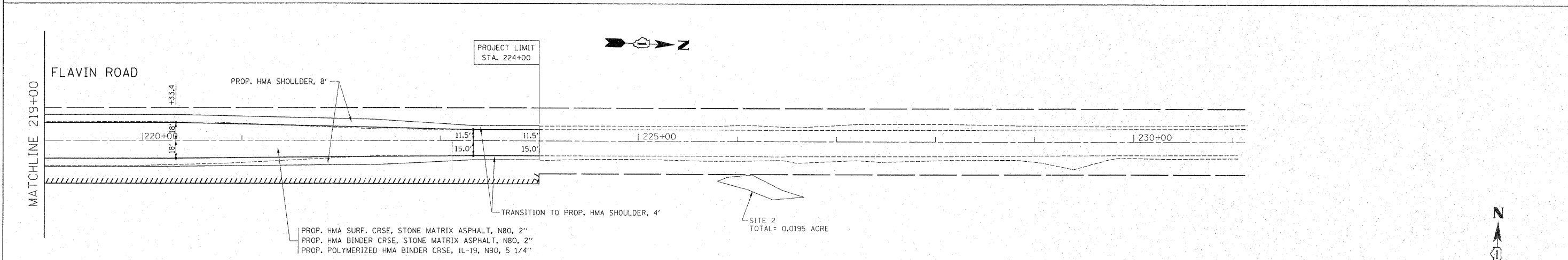
DATE	
BY	
PLAN	
SURVEYED	
NOTED	
GRADES CHECKED	
ALIGNED	
RT. OF WAY CHECKED	
PROP. FILE NAME	

DATE	
BY	
PROFILE	
SURVEYED	
NOTED	
GRADES CHECKED	
ALIGNED	
RT. OF WAY CHECKED	
PROP. FILE NAME	



**LEGEND**

	PAVEMENT REMOVAL
	SHOULDER REMOVAL
	DRIVEWAY PAVEMENT REMOVAL



FILE NAME =	USER NAME = steedpa	DESIGNED -	REVISED -	<b>STATE OF ILLINOIS DEPARTMENT OF TRANSPORTATION</b>	104th AVE. / FLAVIN ROAD @ 95th STREET EXIST. & PROP. ROADWAY PLAN		F.A.U. RTE.	SECTION	COUNTY	TOTAL SHEETS	SHEET NO.
c:\pwork\pwork\stedpa\d0159937\p14449	=sht-plnprf.dgn	DRAWN -	REVISED -		1566	29R-N-1	COOK	120	17		
PLOT SCALE = 50.768' / IN.	CHECKED -	REVISED -	SCALE:		SHEET NO.	OF	SHEETS	STA.	TO STA.	CONTRACT NO. 62377	
PLOT DATE = 2/3/2011	DATE -	REVISED -	ILLINOIS FED. AID PROJECT								