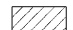


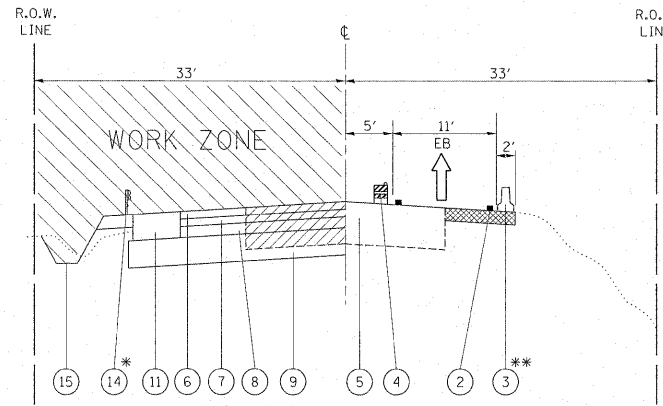


**LEGEND**

-  PAVEMENT REMOVAL
-  TEMPORARY PAVEMENT
-  TRAFFIC LANE
- ① TEMPORARY PAVEMENT MARKING  
DOUBLE YELLOW CENTERLINE, 4"
- ② TEMPORARY PAVEMENT MARKING  
EDGE LINE, 4" WHITE
- ③ TEMPORARY CONCRETE BARRIER
- ④ VERTICAL PANELS OR DRUMS  
WITH STEADY BURNING LIGHT
- ⑤ EXISTING PAVEMENT
- ⑥ PROPOSED POLYMERIZED HOT-MIX ASPHALT SURFACE COURSE,  
STONE MATRIX ASPHALT, N80, 2"
- ⑦ PROPOSED POLYMERIZED HOT-MIX ASPHALT BINDER COURSE,  
STONE MATRIX ASPHALT, N80, 2"
- ⑧ PROPOSED POLYMERIZED HOT-MIX ASPHALT BINDER COURSE,  
IL-19, N90, 5/4"
- ⑨ PROPOSED AGGREGATE SUBGRADE, 12"
- ⑩ PROPOSED RETAINING WALL
- ⑪ PROPOSED HOT-MIX ASPHALT SHOULDER, 4'
- ⑫ PROPOSED HOT-MIX ASPHALT SHOULDER, 6'
- ⑬ PROPOSED HOT-MIX ASPHALT SHOULDER, 8'
- ⑭ PROPOSED STEEL PLATE BEAM GUARDRAIL
- ⑮ PROPOSED GRADING AND SHAPING DITCHES

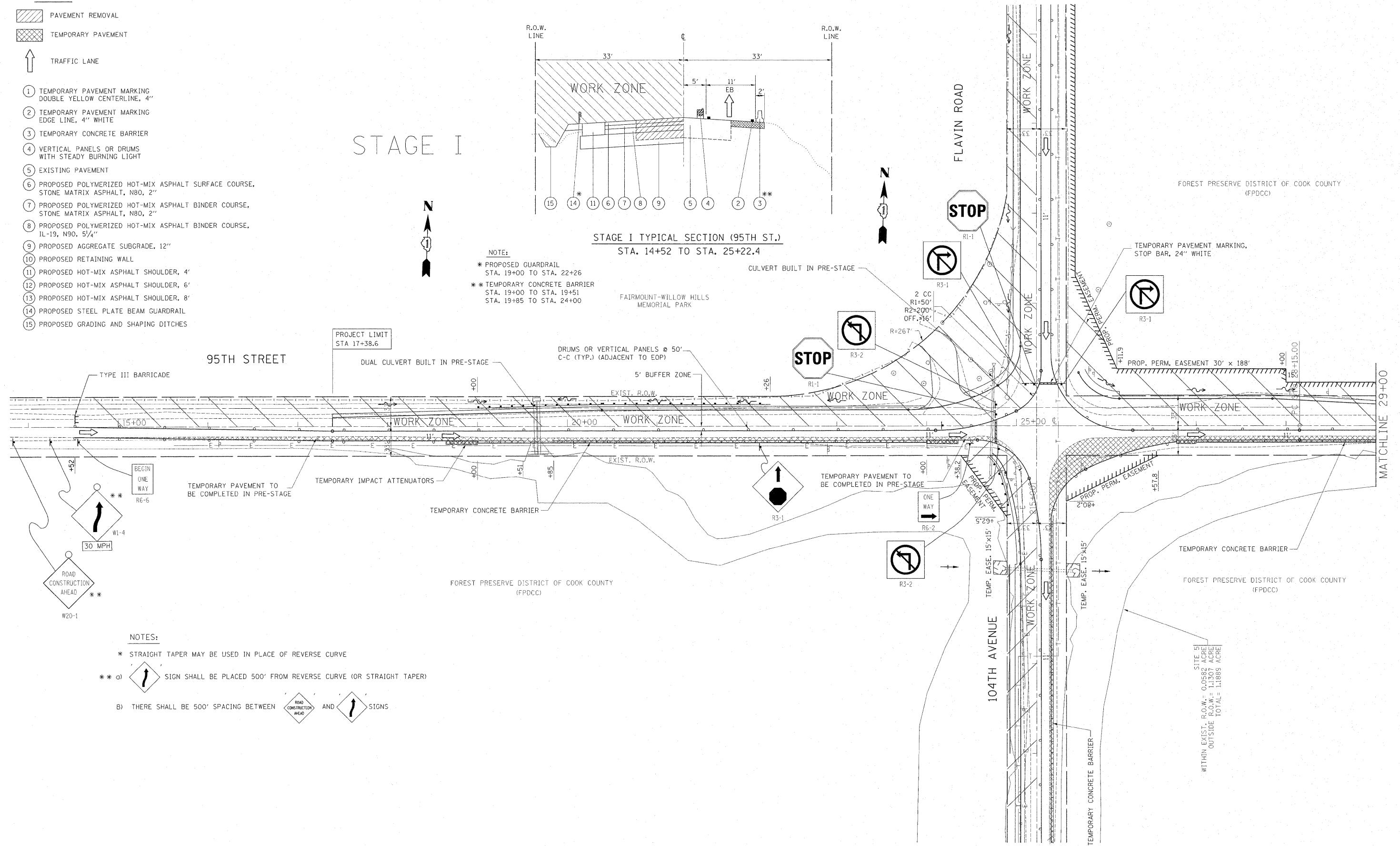
**STAGE I**





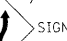
**STAGE I TYPICAL SECTION (95TH ST.)  
STA. 14+52 TO STA. 25+22.4**

- NOTE:**
- \* PROPOSED GUARDRAIL  
STA. 19+00 TO STA. 22+26
  - \*\* TEMPORARY CONCRETE BARRIER  
STA. 19+00 TO STA. 19+51  
STA. 19+85 TO STA. 24+00

FAIRMOUNT-WILLOW HILLS  
MEMORIAL PARK



**NOTES:**

- \* STRAIGHT TAPER MAY BE USED IN PLACE OF REVERSE CURVE
- \*\* a)  SIGN SHALL BE PLACED 500' FROM REVERSE CURVE (OR STRAIGHT TAPER)
- b) THERE SHALL BE 500' SPACING BETWEEN  AND  SIGNS

FILE NAME =	USER NAME = steedpa	DESIGNED -	REVISED -
g:\pw_work\pwidot\stedpa\d0159915\p144499-Design.dgn		DRAWN -	REVISED -
		CHECKED -	REVISED -
		DATE -	REVISED -

**STATE OF ILLINOIS  
DEPARTMENT OF TRANSPORTATION**

**SUGGESTED STAGING AND TRAFFIC CONTROL PLAN - STAGE I  
95th STREET @ 104th AVENUE / FLAVIN ROAD**

SCALE: SHEET NO. OF SHEETS STA. TO STA.

F.A.U. RTE. 1566	SECTION 29 R-N-1	COUNTY COOK	TOTAL SHEETS 120	SHEET NO. 22
CONTRACT NO. 62377			ILLINOIS FED. AID PROJECT	

SITE 5  
WITHIN EXIST. R.O.W. = 0.0582 ACRE  
OUTSIDE R.O.W. = 1.1307 ACRE  
TOTAL = 1.1889 ACRE