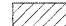

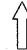


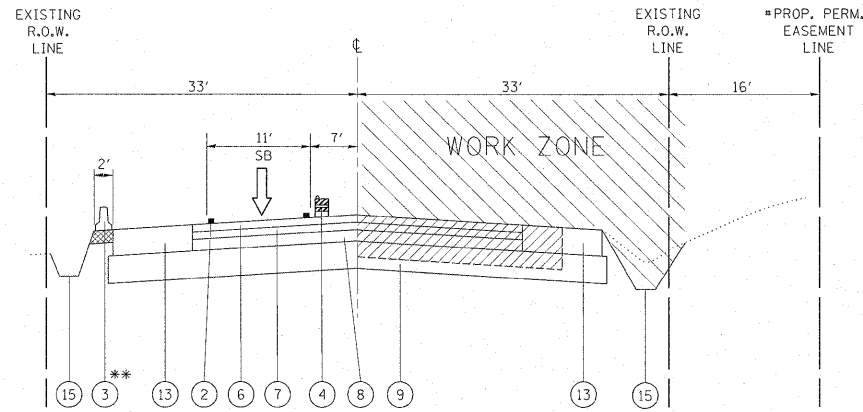
LEGEND

-  PAVEMENT REMOVAL
-  TEMPORARY PAVEMENT *
-  TRAFFIC LANE

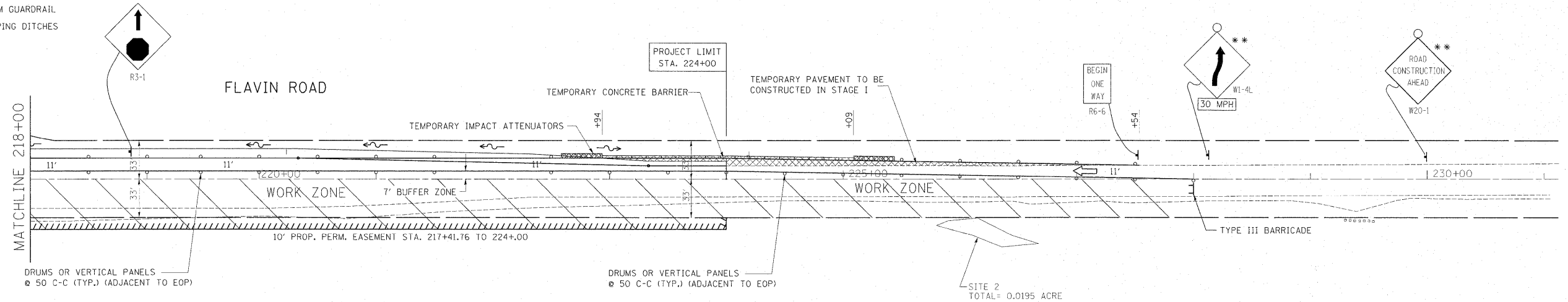
- ① TEMPORARY PAVEMENT MARKING DOUBLE YELLOW CENTERLINE, 4"
- ② TEMPORARY PAVEMENT MARKING EDGE LINE, 4" WHITE
- ③ TEMPORARY CONCRETE BARRIER
- ④ VERTICAL PANELS OR DRUMS WITH STEADY BURNING LIGHT
- ⑤ EXISTING PAVEMENT
- ⑥ PROPOSED POLYMERIZED HOT-MIX ASPHALT SURFACE COURSE, STONE MATRIX ASPHALT, N80, 2"
- ⑦ PROPOSED POLYMERIZED HOT-MIX ASPHALT BINDER COURSE, STONE MATRIX ASPHALT, N80, 2"
- ⑧ PROPOSED POLYMERIZED HOT-MIX ASPHALT BINDER COURSE, IL-19, N90, 5 1/4"
- ⑨ PROPOSED AGGREGATE SUBGRADE, 12"
- ⑩ PROPOSED RETAINING WALL
- ⑪ PROPOSED HOT-MIX ASPHALT SHOULDER, 4'
- ⑫ PROPOSED HOT-MIX ASPHALT SHOULDER, 6'
- ⑬ PROPOSED HOT-MIX ASPHALT SHOULDER, 8'
- ⑭ PROPOSED STEEL PLATE BEAM GUARDRAIL
- ⑮ PROPOSED GRADING AND SHAPING DITCHES

STAGE II




- NOTE:**
- * TEMPORARY PAVEMENT STA. 222+94 TO STA. 227+54
 - ** TEMPORARY CONCRETE BARRIER STA. 222+94 TO STA. 225+09
 - # PROP. PERMANENT EASEMENT STA. 217+31 TO 224+00



STAGE II TYPICAL SECTION (FLAVIN RD.)
STA. 215+64.3 TO STA. 227+54



NOTES:

- * STRAIGHT TAPER MAY BE USED IN PLACE OF REVERSE CURVE
- ** a)  SIGN SHALL BE PLACED 500' FROM REVERSE CURVE (OR STRAIGHT TAPER)
- b) THERE SHALL BE 500' SPACING BETWEEN  AND  SIGNS

FILE NAME = c:\pw_work\pwidot\steadpa\0159915\14499-Design.dgn	USER NAME = steadpa	DESIGNED -	REVISED -	STATE OF ILLINOIS DEPARTMENT OF TRANSPORTATION	SUGGESTED STAGING AND TRAFFIC CONTROL PLAN - STAGE II 95th STREET @ 104th AVENUE / FLAVIN ROAD		F.A.U. RTE. 1566	SECTION 29 R-N-1	COUNTY COOK	TOTAL SHEETS 120	SHEET NO. 29	
PLOT SCALE = 50.0000' / in.	CHECKED -	REVISED -	REVISED -		SCALE:	SHEET NO. OF SHEETS	STA. TO STA.	CONTRACT NO. 62377				
PLOT DATE = 12/6/2011	DATE -	REVISED -	REVISED -		ILLINOIS FED. AID PROJECT							