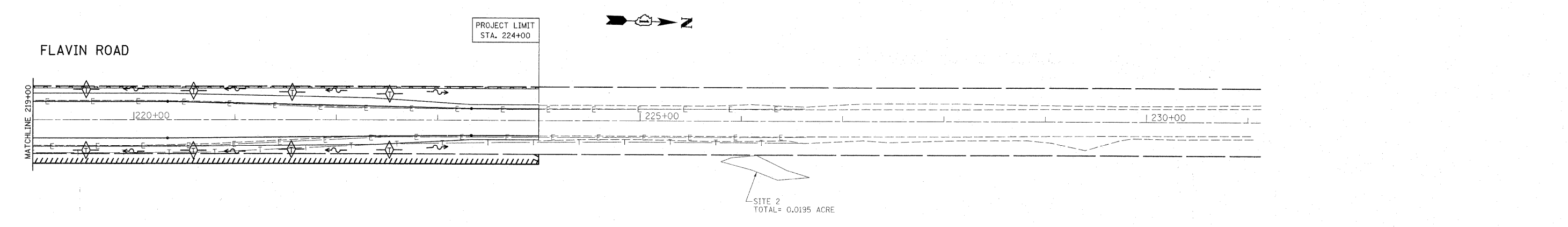


EROSION CONTROL GENERAL NOTES:

1. TEMPORARY EROSION CONTROL SEEDING IS TO BE PROVIDED AT ALL ERODIBLE BARE EARTH AREAS.
2. THE CONTRACTOR SHALL PROVIDE AND MAINTAIN INLET AND OR PIPE PROTECTION AT ALL DRAINAGE STRUCTURES AND AT OTHER LOCATIONS AS DIRECTED BY THE ENGINEER. INLET PROTECTION SHALL BE PLACED IMMEDIATELY AFTER THE INVOLVED AREA HAS BEEN DISTURBED.
3. ALL EROSION CONTROL MEASURES SHALL BE IN ACCORDANCE WITH THE REQUIREMENTS OF THE STANDARD SPECIFICATIONS AND OF THE APPLICABLE STATE STANDARD FOR THE ENTIRE DURATION OF THE CONTRACT, OR UNTIL SUCH A TIME AS DIRECTED BY THE ENGINEER.
4. PERIMETER EROSION CONTROL BARRIER SHALL BE PLACED 12 INCHES FROM THE RIGHT-OF-WAY OR EASEMENT LINE AS DIRECTED BY THE ENGINEER.
5. AT ANY AREA WHERE THERE IS NO PROPOSED GRADING, THE EXISTING GROUND COVER SHALL REMAIN.
6. DURING CONSTRUCTION AND WHEN ERODABLE SOILS ARE EXPOSED, ALL DRAINAGE STRUCTURES NOT PROTECTED WITH INLET AND OR PIPE PROTECTION SHALL BE KEPT SEALED TO PREVENT ACCESS FROM EROSION. THIS WORK SHALL BE CONSIDERED AS PART OF THE COST OF THE VARIOUS DRAINAGE STRUCTURES.

LEGEND

SYMBOL	DESCRIPTION
	TEMPORARY DITCH CHECK
	PERIMETER EROSION BARRIER
	INLET OR PIPE PROTECTION
	ROADWAY DITCH FLOW
	SWALE



FILE NAME =	USER NAME = ulrichkd	DESIGNED -	REVISED -	STATE OF ILLINOIS DEPARTMENT OF TRANSPORTATION	104TH AVENUE @ 95TH STREET EROSION CONTROL PLAN			F.A.U. RTE. 1566	SECTION 29 R-N-1	COUNTY COOOK	TOTAL SHEETS 120	SHEET NO. 31			
os\pwork\pwork\ulrichkd\d0159937\PI44	99-shr-eros.dgn	DRAWN -	REVISED -					SCALE: SHEET NO. OF SHEETS STA. TO STA.							
		CHECKED -	REVISED -					ILLINOIS FED. AID PROJECT							
		DATE -	REVISED -					CONTRACT NO. 62377							