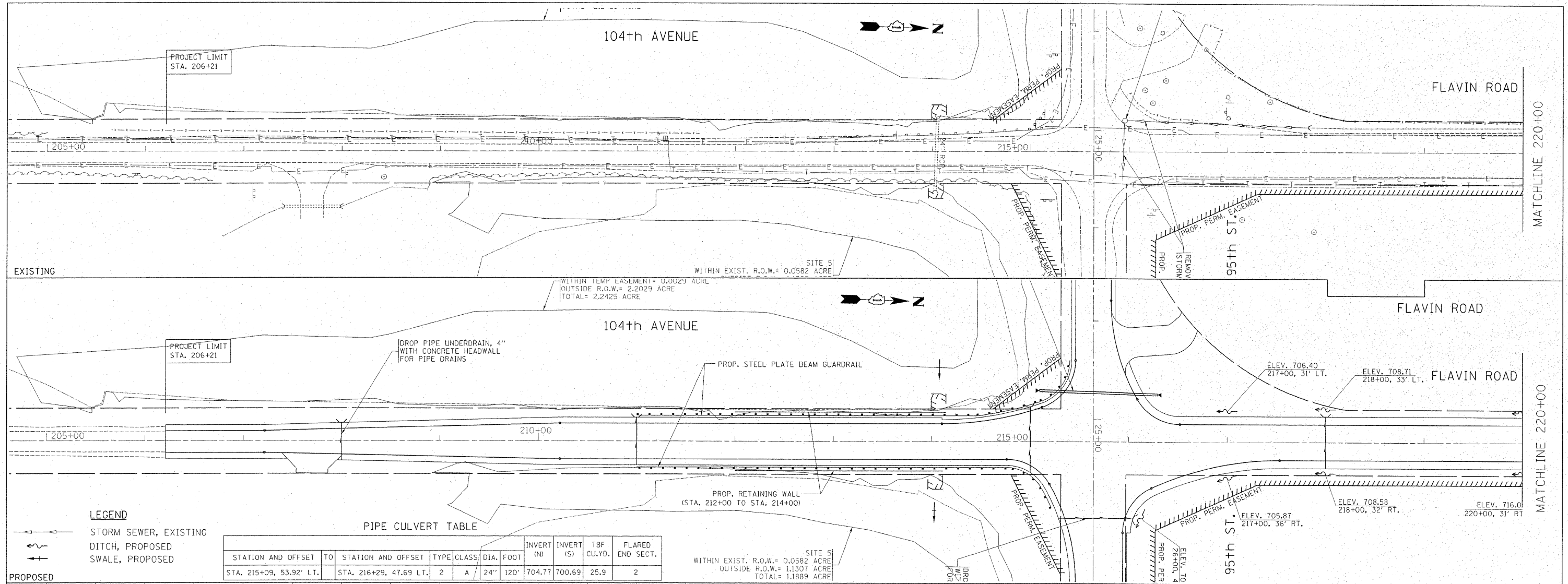


PLAN	SURVEYED	DATE
	PLOTTED	
	CHECKED	
	BY	
	NO. OF RAY CHECKED	
	CADD FILE NAME	
	NO.	

PROFILE	SURVEYED	DATE
	PLOTTED	
	CHECKED	
	BY	
	NO. OF RAY CHECKED	
	STRUCTURE NOTATIONS CHK'D	
	NO.	



LEGEND

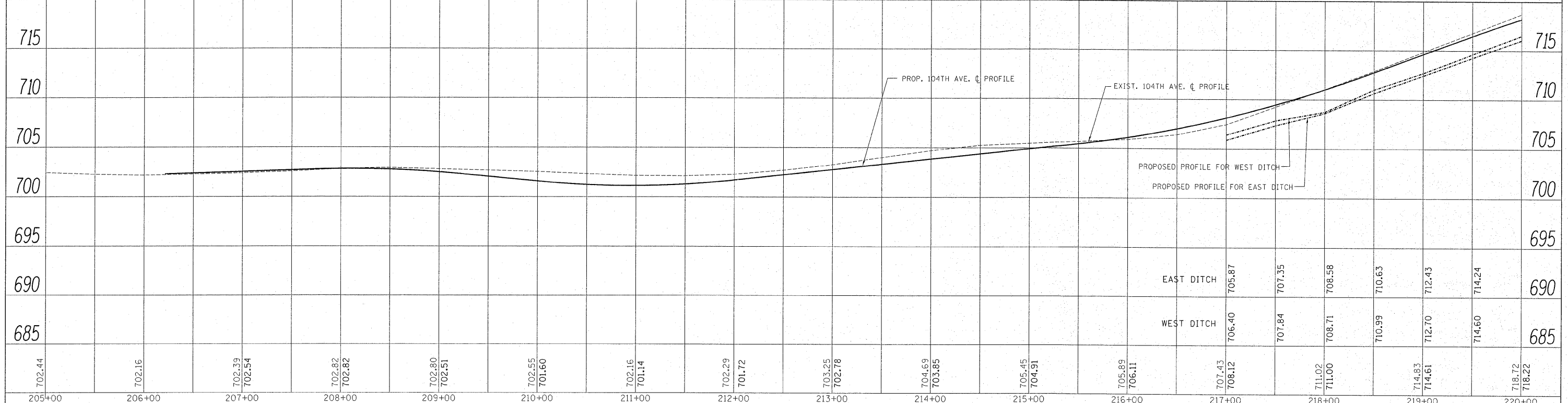
— STORM SEWER, EXISTING

- - - DITCH, PROPOSED

— SWALE, PROPOSED

PIPE CULVERT TABLE

STATION AND OFFSET	TO	STATION AND OFFSET	TYPE	CLASS	DIA.	FOOT	INVERT (N)	INVERT (S)	TBF CU.YD.	FLARED END SECT.
STA. 215+09, 53.92' LT.		STA. 216+29, 47.69 LT.	2	A	24"	120'	704.77	700.69	25.9	2



FILE NAME =	USER NAME = steedpa	DESIGNED -	REVISED -	<p align="center">STATE OF ILLINOIS DEPARTMENT OF TRANSPORTATION</p> <p align="center">104th AVE. / FLAVIN ROAD @ 95th STREET EXIST. & PROP. DRAINAGE PLAN</p>	F.A.U. RTE.	SECTION	COUNTY	TOTAL SHEETS	SHEET NO.
or:\pwork\psidot\stedpa\0159937\PI4449\shd-drain.dgn		DRAWN -	REVISED -		1566	29R-N-1	COOK	120	34
PLOT SCALE = 50.000' / in.		CHECKED -	REVISED -		CONTRACT NO. 62377				
PLOT DATE = 12/22/2011		DATE -	REVISED -		ILLINOIS FED. AID PROJECT				