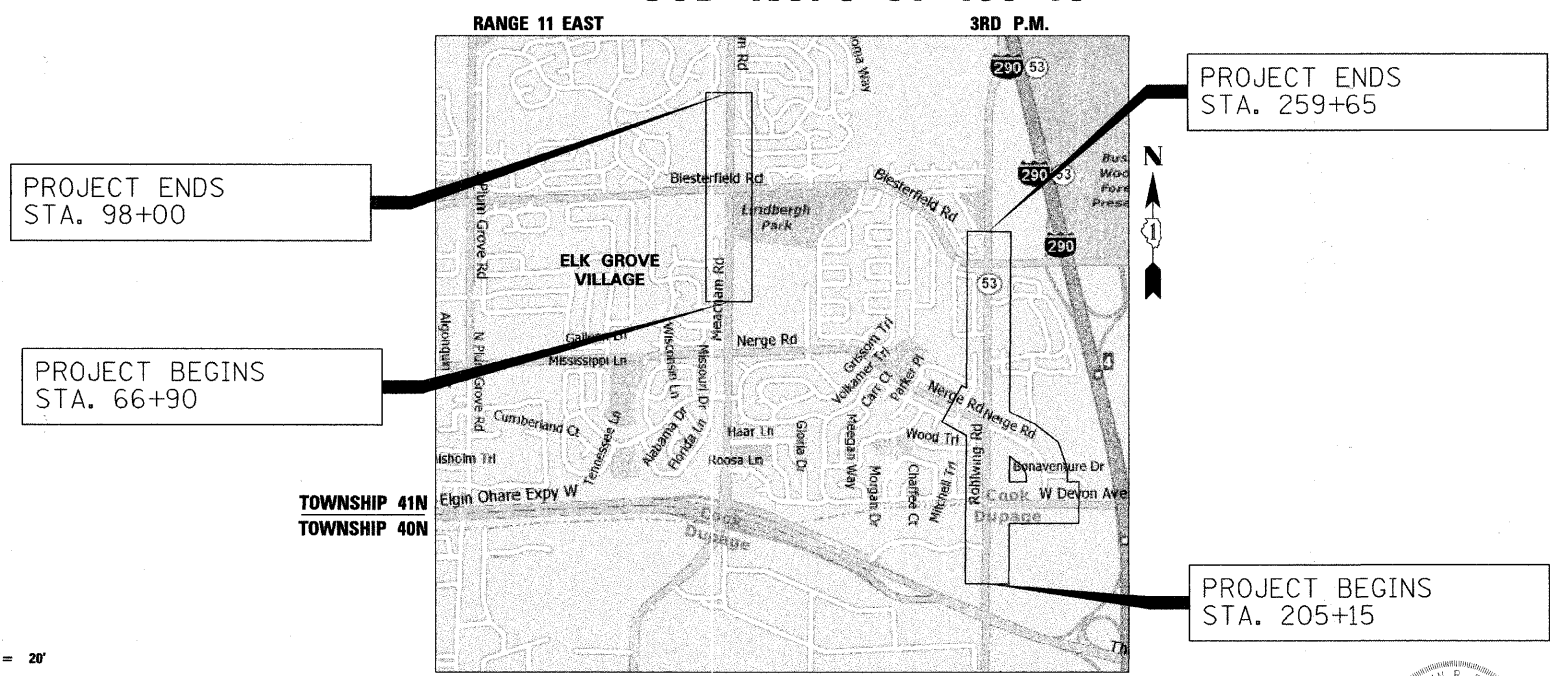


F.A.U. R.F.E. 2585 2578	SECTION 10 00059-00-LT	COUNTY COOK	TOTAL SHEETS 21	SHEET NO. 1
FED. ROAD DIST. NO.	ILLINOIS	CONTRACT NO. 63530		

STATE OF ILLINOIS
DEPARTMENT OF TRANSPORTATION
DIVISION OF HIGHWAYS

**PLANS FOR PROPOSED
FEDERAL AID HIGHWAY**
FAU ROUTE 2585 (MEACHAM ROAD) AND
FAU ROUTE 2578 (ROHLWING ROAD)
NORTH OF NERGE ROAD TO TEXAS STREET AND
ELGIN-O'HARE EXPRESSWAY TO HELEN LANE
LIGHTING IMPROVEMENTS
SECTION 10-00059-00-LT
PROJECT M-9003(615)
VILLAGE OF ELK GROVE VILLAGE
COOK AND DUPAGE COUNTIES
JOB NO. C-91-460-10

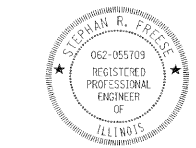
FOR INDEX OF SHEETS, SEE SHEET NO. 2



LOCATION MAP

NOT TO SCALE

PROJECT LENGTH
MEACHAM ROAD = 3,110 FT (0.59 MILES)
ROHLWING ROAD = 5,450 FT (1.03 MILES)
NERGE ROAD = 2,139 FT (0.41 MILES)
DEVON AVENUE = 1,330 FT (0.25 MILES)
TOTAL GROSS AND NET LENGTH = 12,029 FT (2.28 MILES)



STEPHAN R. FEESE
REGISTERED PROFESSIONAL ENGINEER OF ILLINOIS
NO. 062-055709
EXP. DATE 11/30/13

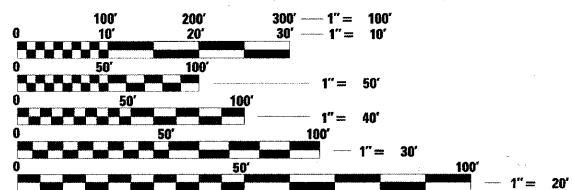
STATE OF ILLINOIS
DEPARTMENT OF TRANSPORTATION
DIVISION OF HIGHWAYS

APPROVED December 22 20 11
Mary G. Pyle
VILLAGE OF ELK GROVE VILLAGE, ACTING DIRECTOR
OF ENGINEERING & COMMUNITY DEVELOPMENT

PASSED JAN 4 20 12
C. J. Hill
DISTRICT 1 ENGINEER OF LOCAL ROADS & STREETS

RELEASING FOR BID
BASED ON LIMITED
REVIEW JANUARY 4, 20 12
Diana M. O'Keefe
DEPUTY DIRECTOR OF HIGHWAYS, REGION 1 ENGINEER

**PRINTED BY THE AUTHORITY
OF THE STATE OF ILLINOIS**



FULL SIZE PLANS HAVE BEEN PREPARED USING STANDARD ENGINEERING SCALES. REDUCED SIZED PLANS WILL NOT CONFORM TO STANDARD SCALES. IN MAKING MEASUREMENTS ON REDUCED PLANS, THE ABOVE SCALES MAY BE USED.

J.U.L.I.E.
JOINT UTILITY LOCATION INFORMATION FOR EXCAVATION
1-800-892-0123
OR 811

CONTRACT NO. 63530

CONSULTANT
TranSystems
 222 SOUTH RIVERSIDE PLAZA, SUITE 2320
 CHICAGO, ILLINOIS 60608
 (312) 865-9801
 PROGRAM AND OFFICE ENGINEER: CHARLES F. RIDDLE, P.E. 847-705-4406 **SCHUMBERG, S.L.**