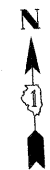
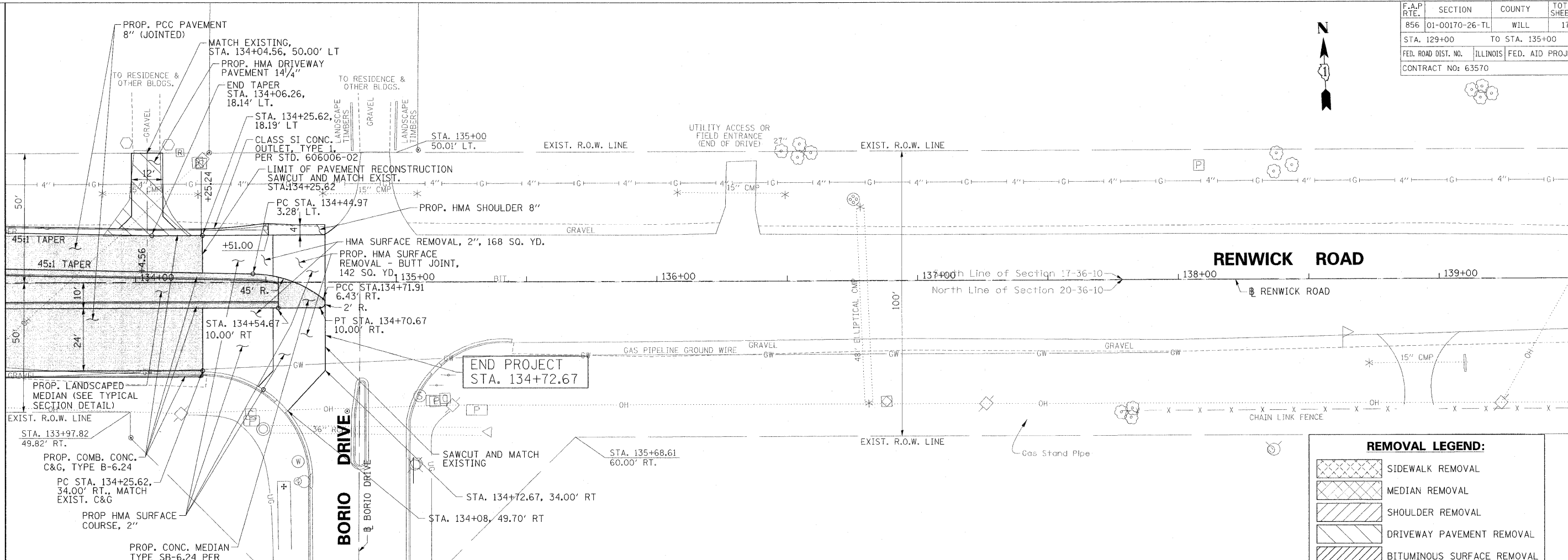


F.A.P. RTE.	SECTION	COUNTY	TOTAL SHEETS	SHEET NO.
B56	01-00170-26-TL	WILL	171	30
STA. 129+00		TO STA. 135+00		
FED. ROAD DIST. NO.		ILLINOIS	FED. AID PROJECT	
CONTRACT NO: 63570				



MATCH LINE STA. 133+50

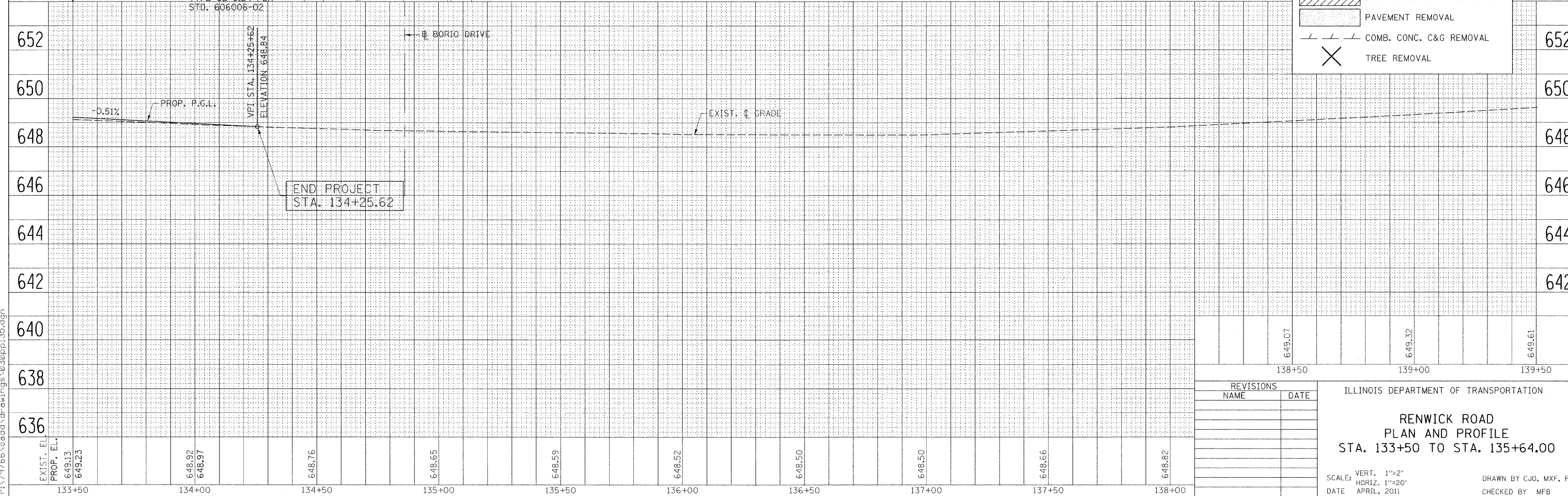


RENWICK ROAD

BORIO DRIVE

REMOVAL LEGEND:

	SIDEWALK REMOVAL
	MEDIAN REMOVAL
	SHOULDER REMOVAL
	DRIVEWAY PAVEMENT REMOVAL
	BITUMINOUS SURFACE REMOVAL
	PAVEMENT REMOVAL
	COMB. CONC. C&G REMOVAL
	TREE REMOVAL



REVISIONS

NAME	DATE

ILLINOIS DEPARTMENT OF TRANSPORTATION

**RENWICK ROAD
PLAN AND PROFILE
STA. 133+50 TO STA. 135+64.00**

SCALE: VERT. 1"=2'
HORIZ. 1"=20'

DATE: APRIL, 2011

DRAWN BY CJO, MXF, PP
CHECKED BY MFB

8/22/2011 P:\179766\cadd\drawings\030\pp\35.dgn