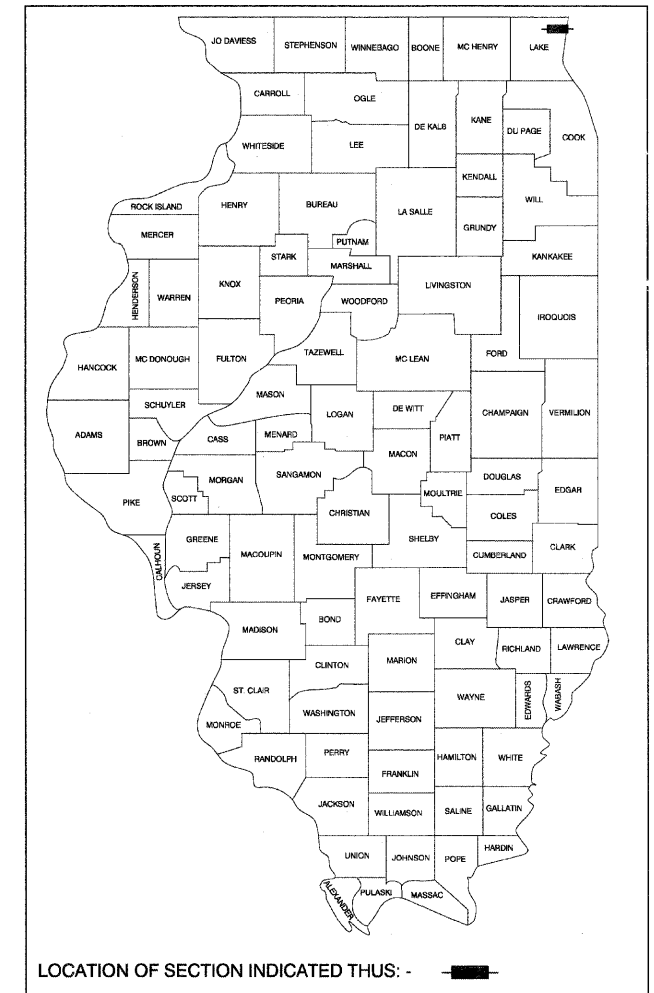


F.A.U. RTE.	SECTION	COUNTY	TOTAL SHEETS	SHEET NO.
2701	10-00042-00-SW	LAKE	34	1
		ILLINOIS	CONTRACT NO. 63605	

STATE OF ILLINOIS  
DEPARTMENT OF TRANSPORTATION  
DIVISION OF HIGHWAYS

# PLANS FOR PROPOSED FEDERAL AID HIGHWAY

FAU 2701 GREENLEAF AVENUE  
SIDEWALK & LIGHTING  
CORNELL AVENUE TO CORPORATE LIMITS  
SECTION: 10-00042-00-SW  
PROJECT: TE-00D1 (829)  
CITY OF PARK CITY  
LAKE COUNTY  
JOB NUMBER - C-91-568-10



FOR INDEX OF SHEETS, SEE SHEET NO. 2

**TRAFFIC DATA**

**GREENLEAF AVE.**

2008 ADT = 12,300 VPD  
2009 ADT = 12,500 VPD  
2010 ADT = 12,300 VPD

**DESIGN DESIGNATION - COLLECTOR**

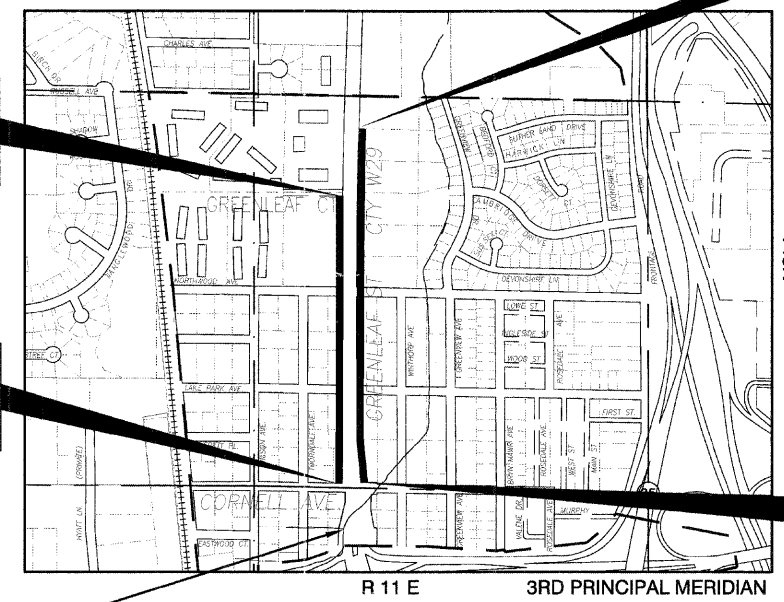
DESIGN SPEED = 50 MPH  
POSTED SPEED = 40 MPH

PROJECT ENDS  
EAST SIDE STA  
41+88

PROJECT ENDS  
WEST SIDE STA  
35+67

PROJECT BEGINS  
WEST SIDE STA  
15+27

PROJECT BEGINS  
EAST SIDE STA  
15+15



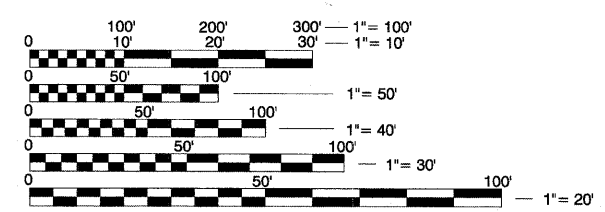
**PROJECT BENCHMARK:**  
FIRM RM 157-6 CHISELED SQUARE IN TOP OF NORTH END OF WEST HEADWALL OF CULVERT FOR SOUTH FORK GURNEE TRIBUTARY UNDER GREENLEAF AVE, APPROXIMATELY 120' SOUTH OF CORNELL AVE.  
ELEV.=697.79 (PUBLISHED, AND MEASURED AS LOCAL DATUM)

**LOCATION MAP  
SCALE**

NOT TO SCALE

GROSS LENGTH = 2,673 FT. - 0.506 MILE  
NET LENGTH = 2,673 FT. = 0.506 MILE

PROJECT IS LOCATED IN THE CITY OF PARK CITY



FULL SIZE PLANS HAVE BEEN PREPARED USING STANDARD ENGINEERING SCALES. REDUCED SIZED PLANS WILL NOT CONFORM TO STANDARD SCALES. IN MAKING MEASUREMENTS ON REDUCED PLANS, THE ABOVE SCALES MAY BE USED.

J.U.L.I.E.  
JOINT UTILITY LOCATION INFORMATION FOR EXCAVATION  
1-800-892-0123  
OR 811



CONTRACT: 63605

STATE OF ILLINOIS  
DEPARTMENT OF TRANSPORTATION  
DIVISION OF HIGHWAYS

APPROVED 20 11  
CITY OF PARK CITY, MAYOR

PASSED JAN 4 20 12  
  
DISTRICT 1 ENGINEER OF LOCAL ROADS & STREETS

RELEASING FOR BID  
BASED ON LIMITED  
REVIEW JANUARY 6, 20 12  
  
DEPUTY DIRECTOR OF HIGHWAYS, REGION 1 ENGINEER

PROFESSIONAL ENGINEER'S SIGN & SEAL

12-29-2011

MAREK K. KLONOWSKI, P.E.  
EXPIRES: 11-30-13

PRINTED BY THE AUTHORITY  
OF THE STATE OF ILLINOIS

PROGRAM AND OFFICE ENGINEER: CHARLES F. RIDDLE, P.E. 847-705-4406