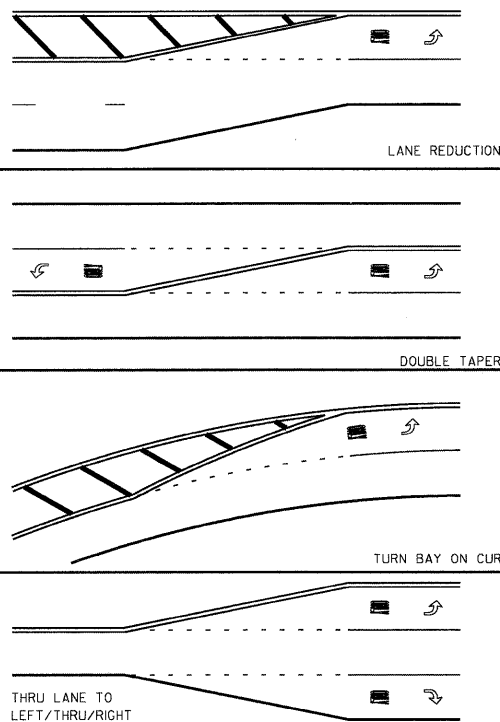


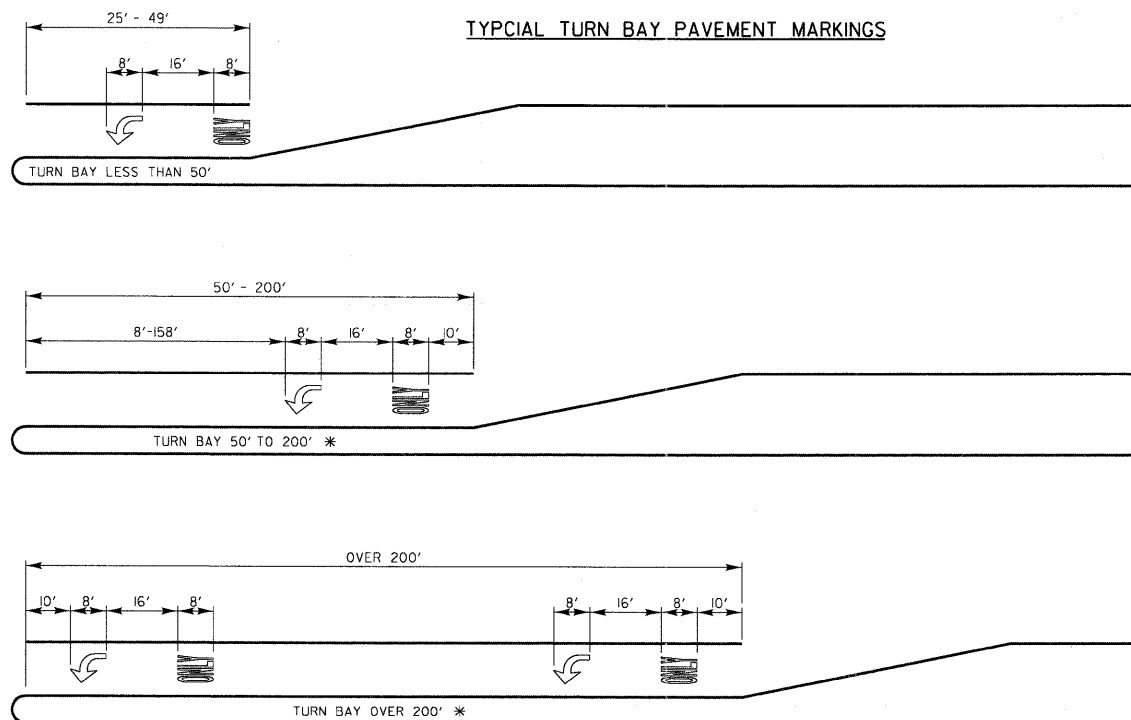
TYPICAL MINI-SKIP PAVEMENT MARKINGS



MINI-SKIPS ARE 2 FEET WHITE LINE WITH 6 FEET SPACING. THE MINI-SKIP IS THE SAME WIDTH AS THE PAVEMENT MARKING LINE, IT EXTENDS.

TYPICAL PAVEMENT MARKINGS

TYPICAL TURN BAY PAVEMENT MARKINGS



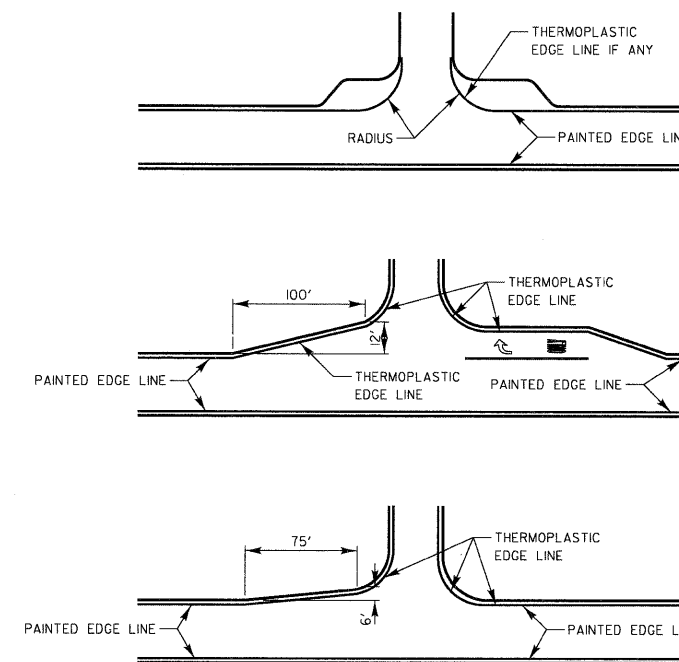
\* AT INTERSECTIONS WITH VIDEO DETECTION, THE ARROW AND ONLY PAVEMENT MARKINGS SHALL BE A MINIMUM OF 30' BEHIND THE STOP BAR.

AREA = 15.6 SQ. FT.

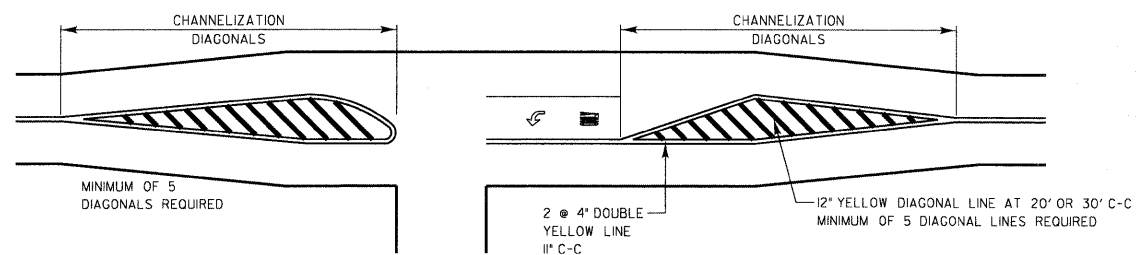
AREA = 20.8 SQ. FT.

FULL SIZE LETTERS (8") AND ARROWS SHALL BE USED. TURN LANES IN EXCESS OF 400' IN LENGTH MAY HAVE AN ADDITIONAL SET OF ARROW W/ 'ONLY' INSTALLED MIDWAY BETWEEN THE OTHER TWO SETS OF ARROW W/ 'ONLY'.

EDGE LINE RADII AT SIDE STREETS



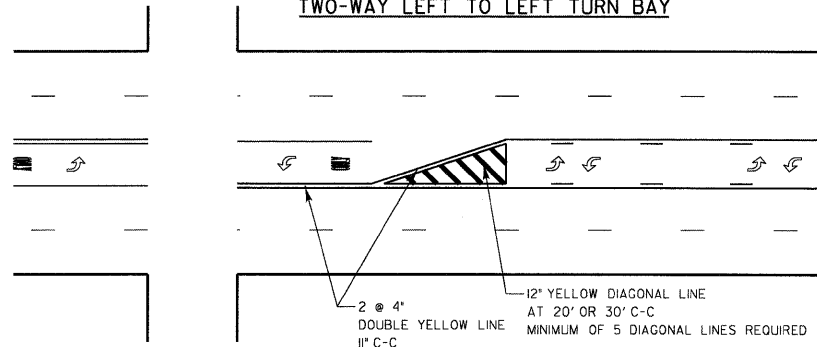
TWO LANE ROAD



TYPICAL DIAGONAL SPACING

SPEED LIMIT RANGE	DIAGONAL SPACING	
	CONTINUOUS	INTERSECTION CHANNELIZATION
30-45 MPH	75 FT.	20 FT.
OVER 45 MPH	150 FT.	30 FT.

TWO-WAY LEFT TO LEFT TURN BAY



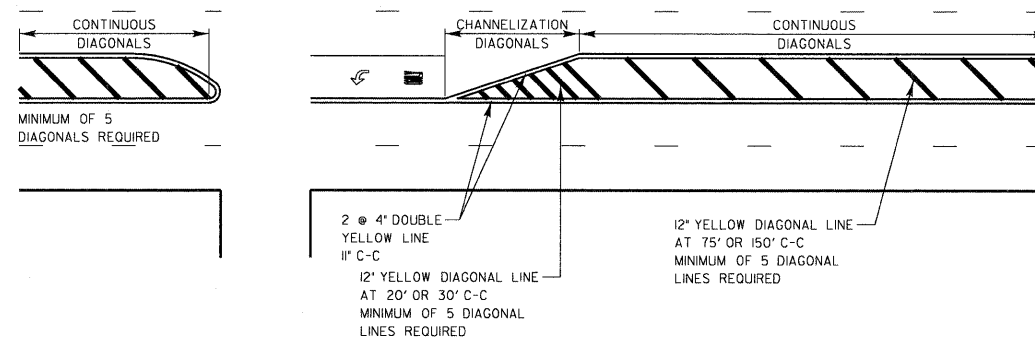
DUAL LEFT TURN ARROWS



3 1/2 SQ. FT. MINIMUM OF 2 SETS REQUIRED

A MINIMUM OF TWO PAIRS OF DUAL LEFT TURN ARROWS SHALL BE USED. THE DUAL LEFT TURN ARROWS SHALL BE WHITE IN COLOR. THE INTERVAL BETWEEN SETS OF DUAL LEFT TURN ARROWS SHOULD BE 200' AND 300'.

3 TO 5 LANE ROAD



REVISIONS	DATE
Separated Railroad Sheet	06/02/08



APPROVED BY: A. KHAWAJA  
DATE: APRIL 1, 2007

TYPICAL PAVEMENT MARKINGS FOR COUNTY HIGHWAYS  
SHEET 1 OF 2

LC7800