

T.R. RTE.	SECTION	COUNTY	TOTAL SHEETS	SHEET NO.
2442	04-08107-00-BR	KANE	80	1
FED. ROAD DIST. NO. 1	ILLINOIS	CONTRACT NO. 63644		

STATE OF ILLINOIS
DEPARTMENT OF TRANSPORTATION
DIVISION OF HIGHWAYS
**PLANS FOR PROPOSED
FEDERAL AID HIGHWAY**

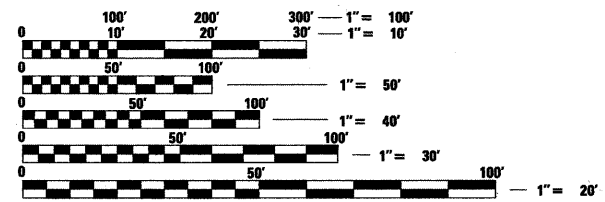
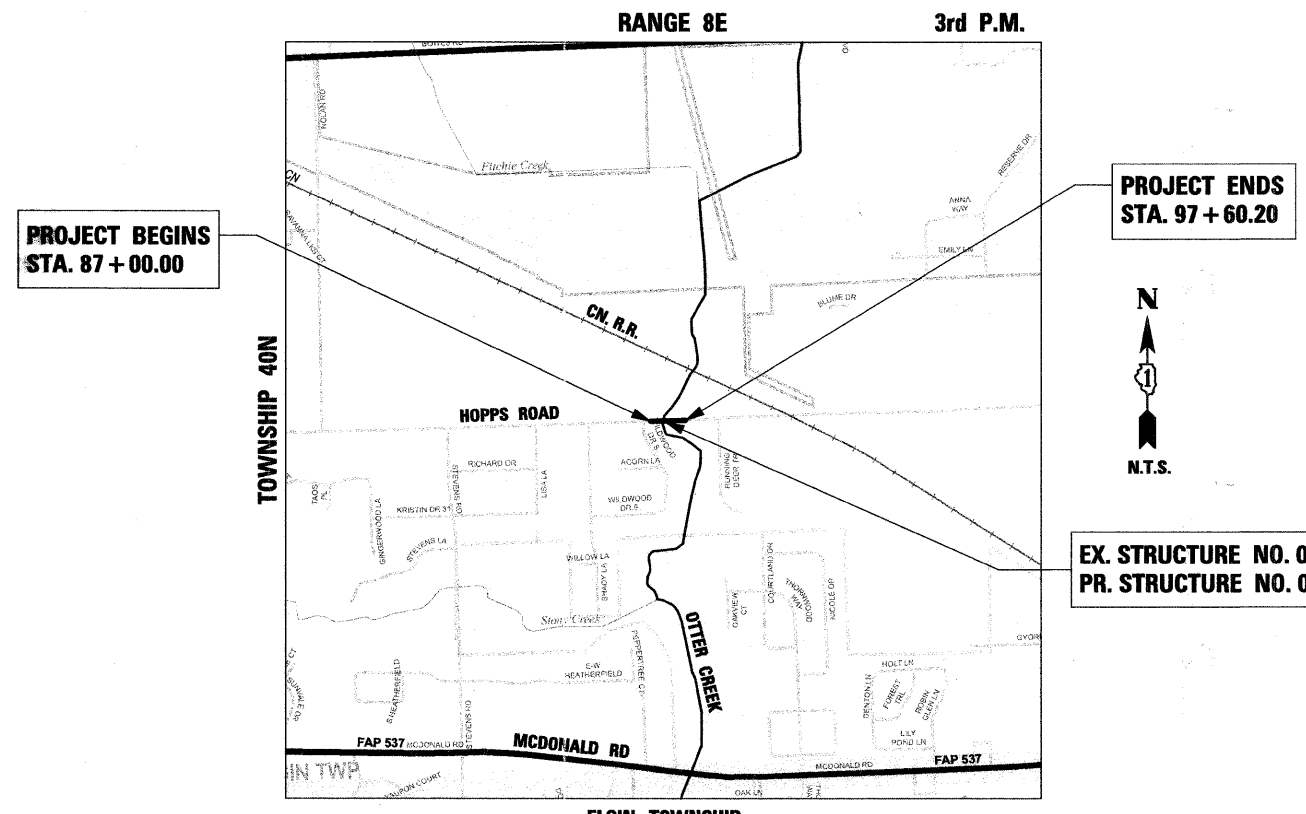
FOR INDEX OF SHEETS, SEE SHEET NO. 2

PROJECT LOCATED IN ELGIN TOWNSHIP

T.R. 2442 (HOPPS ROAD)
OVER OTTER CREEK
BRIDGE REPLACEMENT
SECTION 04-08107-00-BR
PROJECT BROS-0089(161)
ELGIN TOWNSHIP
KANE COUNTY
JOB NO. C-91-126-05

TRAFFIC DATA

2006 ADT = 2,200
2030 ADT = 7,000
DESIGN SPEED: 50 MPH
DESIGN DESIGNATION: LOCAL ROAD



FULL SIZE PLANS HAVE BEEN PREPARED USING STANDARD ENGINEERING SCALES. REDUCED SIZED PLANS WILL NOT CONFORM TO STANDARD SCALES. IN MAKING MEASUREMENTS ON REDUCED PLANS, THE ABOVE SCALES MAY BE USED.

J.U.L.I.E.
JOINT UTILITY LOCATION INFORMATION FOR EXCAVATION
1-800-892-0123
OR 811

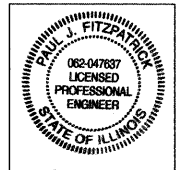
PROJECT NET AND GROSS LENGTH = 1060.2 FT (0.201 MILE)
PROJECT LOCATED IN:
NORTHWEST QUARTER OF SECTION 32 IN TOWNSHIP 40N, RANGE 8E, OF THE THIRD PRINCIPAL MERIDIAN,
KANE COUNTY, ILLINOIS

STATE OF ILLINOIS
DEPARTMENT OF TRANSPORTATION
DIVISION OF HIGHWAYS

APPROVED November 30, 2011
Richard C. Friedman
HIGHWAY COMMISSIONER, ELGIN TOWNSHIP

PASSED JANUARY 5, 2012
Chet Chapman
DISTRICT 1 ENGINEER OF LOCAL ROADS & STREETS

RELEASING FOR BID
BASED ON LIMITED
REVIEW JANUARY 6, 2012
Diana M. O'Hara
DEPUTY DIRECTOR OF HIGHWAYS, REGION 1 ENGINEER



December 19, 2011
Paul J. Fitzpatrick
PAUL J. FITZPATRICK
ILLINOIS REG. PROFESSIONAL ENGINEER NO. 062-047637
EXPIRATION DATE 11-30-2013



**PRINTED BY THE AUTHORITY
OF THE STATE OF ILLINOIS**

CONTRACT NO. 63644

PROGRAM AND OFFICE ENGINEER: CHARLES F. RIDDLE, P.E. (847) 705-4406 SCHAUMBURG, IL