

**LEGEND, EXISTING**

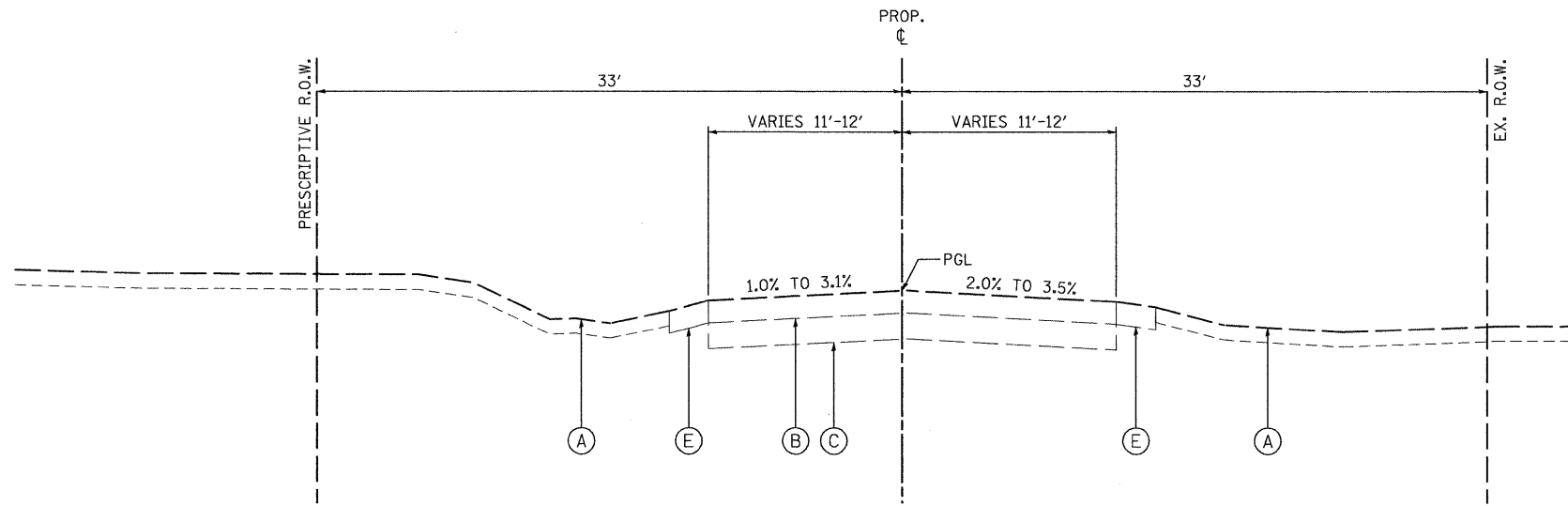
- (A) EXISTING GROUND
- (B) EXISTING HOT-MIX ASPHALT PAVEMENT, 7.6" - TO BE REMOVED (44000100)
- (C) EXISTING AGGREGATE BASE, 7.5"-11.5" - TO BE REMOVED (INCLUDED IN EARTH EXCAVATION)
- (D) EXISTING TOPSOIL - TO BE REMOVED (20201200)
- (E) EXISTING AGGREGATE SHOULDER - TO BE REMOVED (INCLUDED IN EARTH EXCAVATION)
- (F) EXISTING UNSUITABLE MATERIAL - TO BE REMOVED (20201200)

**EXISTING PAVEMENT NOTES**

1. INFORMATION ON PAVEMENT AND BASE COURSE THICKNESS WAS TAKEN FROM INFORMATION DOCUMENTED IN THE ROADWAY GEOTECHNICAL REPORT PREPARED BY TESTING SERVICE CORPORATION DATED JANUARY 19, 2011. SEE ADDITIONAL NOTE BELOW.
2. IT SHALL BE THE RESPONSIBILITY OF THE CONTRACTOR TO VERIFY THE THICKNESS OF THE EXISTING PAVEMENTS TO BE REMOVED AND THE EXTENT TO WHICH IT WAS REINFORCED. NO ADDITIONAL COMPENSATION WILL BE ALLOWED BECAUSE OF VARIATIONS FROM THE ASSUMED THICKNESS SHOWN ON THE PLANS OR FOR VARIATIONS IN THE AMOUNT OF REINFORCEMENT.

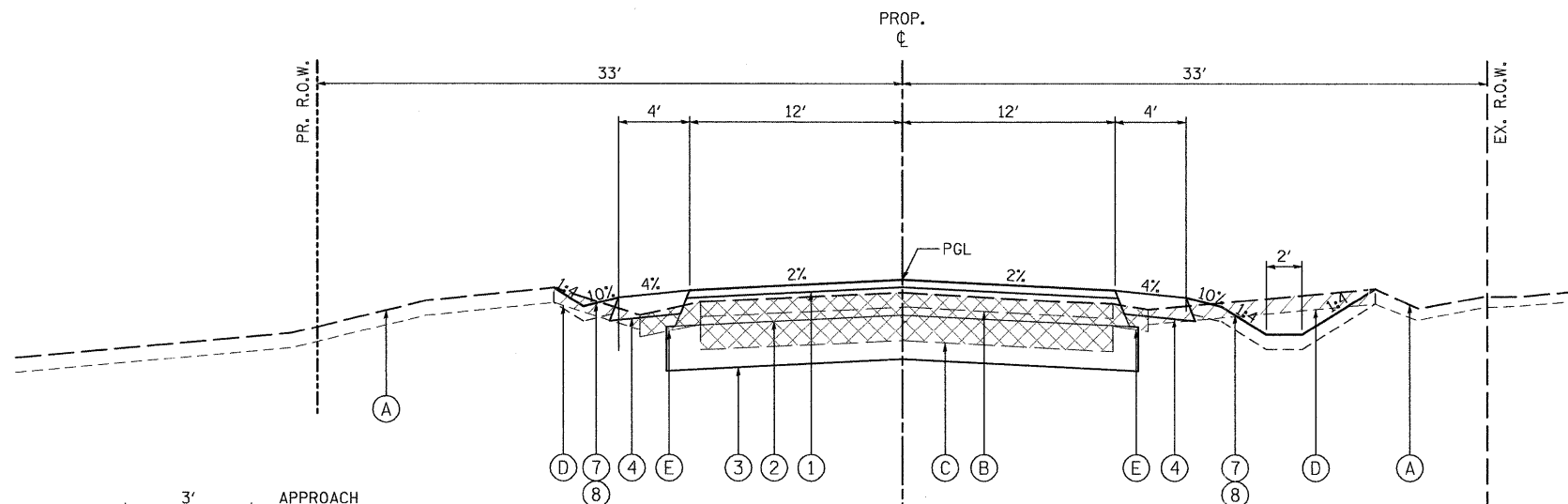
**LEGEND, PROPOSED**

- ① 2" HMA SURFACE COURSE, MIX "D", N50 (40603335)
- ② 7 1/2" HMA BINDER COURSE, IL-19.0, N50 (2 LIFTS - 40603080)
- ③ AGGREGATE SUBGRADE, 12" (Z0001050)
- ④ AGGREGATE SHOULDERS, TYPE B 6" (48101500)
- ⑤ HMA SHOULDERS, 8" (48203029)
- ⑥ SUB-BASE GRANULAR MATERIAL, TYPE B (31101100)
- ⑦ 6" TOPSOIL EXCAVATION AND PLACEMENT (21101505)
- ⑧ SEEDING (TYPE AS SPECIFIED) W/EROSION CONTROL OR HD EROSION CONTROL BLANKET
- ⑨ STRUCTURAL EMBANKMENT (TO BE PAID AS FURNISHED EXCAVATION - 20400800)
- ⑩ STEEL PLATE BEAM GUARDRAIL, TYPE A, 6' POSTS (63000001)
- ⑪ PIPE UNDERDRAIN WITH FILTER FABRIC ENVELOPE, 4" (60107600)
- ⑫ POROUS GRANULAR EMBANKMENT, SUBGRADE (20700420)
- ⑬ AGGREGATE WEDGE SHOULDER, TYPE B (48102100)
- ⑭ AGGREGATE SHOULDER, SPECIAL (CA1) (X4811700)
- ⑮ GEOTECHNICAL FABRIC FOR GROUND STABILIZATION (21001000)



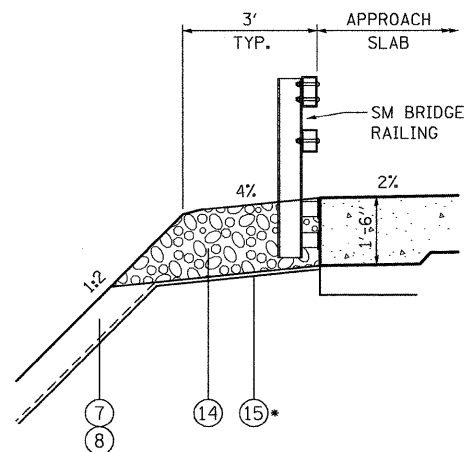
**EXISTING TYPICAL SECTION**

STA. 87+00.00 TO 97+60.20, HOPPS ROAD



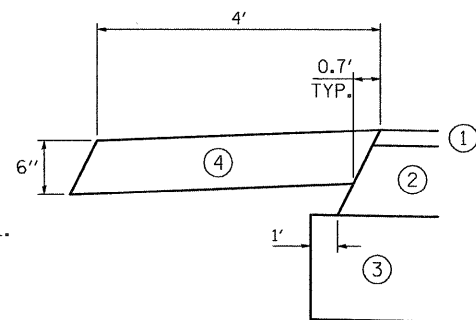
**PROPOSED TYPICAL SECTION NO. 1**

AGGREGATE SHOULDER  
 STA. 87+95.0 TO STA. 90+49.7, HOPPS ROAD  
 STA. 94+49.6 RT / 96+37.1 LT TO STA. 97+60.2, HOPPS ROAD  
 SHAPING & GRADING SHOULDER  
 STA. 87+00.00 TO 87+95.00 LT / 87+55.29 RT, HOPPS ROAD



**TYPICAL SECTION  
 AGGREGATE SHOULDER, SPECIAL**

STA. 92+07.11 TO 92+19.12 LT/RT  
 STA. 92+85.12 TO 92+91.13 LT/RT



**AGGREGATE SHOULDER DETAIL**

**STRUCTURAL PAVEMENT DESIGN**

STRUCTURAL DESIGN TRAFFIC: Year 2030  
 PV = 9500 SU = 300 MU = 200  
 ROAD/STREET CLASSIFICATION: Class 2  
 PERCENT OF STRUCTURAL DESIGN TRAFFIC IN DESIGN LANE:  
 P = 95 S = 3 M = 2  
 TRAFFIC FACTOR: Actual TF = 0.57 AC Type = PG 64-22  
 Minimum TF = NA  
 PG GRADE: Binder = PG 64-22 /58-22 Surface = PG 64-22  
 SUBGRADE SUPPORT RATING: SSR = POOR

HOT-MIX ASPHALT MIXTURE REQUIREMENTS	
ITEM	AIR VOIDS @ Ndes
<b>HOPPS ROAD - RECONSTRUCTION</b>	
HOT-MIX ASPHALT SURFACE COURSE, MIX "D", N50 (IL 9.5 mm); 2"	4% @ 50 GYR.
HOT-MIX ASPHALT BINDER COURSE, IL-19.0, N50; 7 1/2" (2 LIFTS)	4% @ 50 GYR.
<b>HOPPS ROAD - APPROACH PAVEMENT CONNECTOR (FLEXIBLE)</b>	
HOT-MIX ASPHALT SURFACE COURSE, MIX "D", N50 (IL 9.5 mm); 2"	4% @ 50 GYR.
HOT-MIX ASPHALT BINDER COURSE, IL-19.0, N50 (4" MAX. LIFTS)	4% @ 50 GYR.
<b>HMA SHOULDERS</b>	
HOT-MIX ASPHALT SHOULDER (HMA BINDER IL-19 mm), 8" (4" MAX. LIFTS)	4% @ 50 GYR.
<b>DRIVEWAYS- C.E./P.E.</b>	
HOT-MIX ASPHALT SURFACE COURSE, MIX "D", N50 (IL 9.5 mm); 2"	4% @ 50 GYR.
HOT-MIX ASPHALT BASE COURSE (HMA BINDER IL-19 mm), 8" (C.E.) (4" MAX. LIFTS)	4% @ 50 GYR.
HOT-MIX ASPHALT BASE COURSE (HMA BINDER IL-19 mm), 6" (P.E.) (2 LIFTS)	4% @ 50 GYR.

THE UNIT WEIGHT USED TO CALCULATE ALL HMA SURFACE MIXTURE QUANTITIES IS 112 LB/SQ YD/IN.  
 THE AC TYPE FOR NON-POLYMERIZED HMA THE "AC TYPE" SHALL BE "PG64-22" UNLESS MODIFIED BY DISTRICT ONE SPECIAL PROVISIONS. FOR "PERCENT OF RAP" SEE DISTRICT ONE SPECIAL PROVISIONS.

FILE NAME = P:\DBBEL\_WEST\_Projects\2009\09-0073 HoppsPHI\Civil\Drawings\SHA\TYPICAL.dwg



USER NAME = nparriss	DESIGNED - KMA	REVISED -
PLOT SCALE =	DRAWN - NDP	REVISED -
PLOT DATE = 1/3/2012	CHECKED - RPD	REVISED -
	DATE - 12/19/11	REVISED -

**STATE OF ILLINOIS  
 DEPARTMENT OF TRANSPORTATION**

**TYPICAL SECTIONS**

SCALE: SHEET NO. 14 OF 80 SHEETS STA. TO STA.

T.R. RTE.	SECTION	COUNTY	TOTAL SHEETS	SHEET NO.
2442	04-08107-00-BR	KANE	80	14
CONTRACT NO. 63644				
FED. ROAD DIST. NO. ILLINOIS FED. AID PROJECT				